

LESSON PLAN:

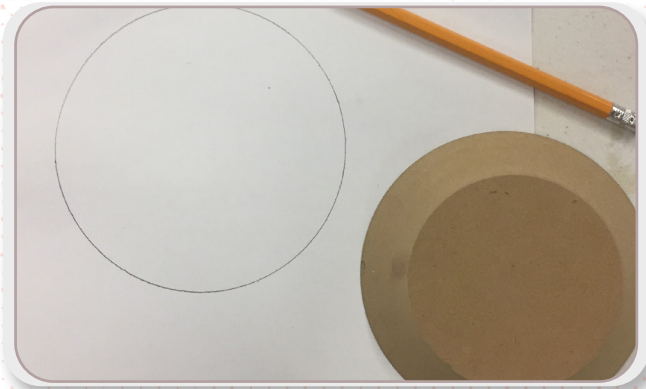
ANIMAL POOF DISH

PRODUCTS AND TOOLS USED

- Low-fire white clay (LEM100 or S105)
- Slap Roller or rolling pin
- GR Form 5" Circle
- Thick upholstery foam
- Sponge
- Fettling Knife
- Rib
- Needle Tool
- Water
- Paper or patterns
- Pencil
- Scissors

COLOR USED

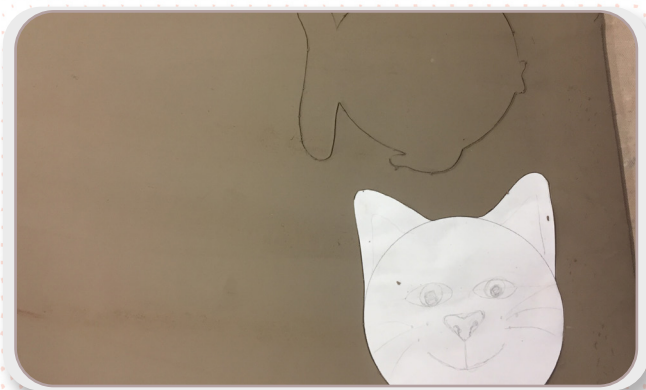
- Various Stroke & Coat
- SC-1 Pink-a-Boo
 - SC-6 Sunkissed
 - SC-11 Blue Yonder
 - SC-15 Tuxedo
 - SC-16 Cotton Tail
 - SC-23 Jack O'Lantern
 - SC-34 Down to Earth
 - SC-35 Gray Hare
 - SC-41 Brown Cow
 - SC-73 Candy Apple Red
 - SC-86 Old Lace



1. Trace GR from wide side down on a piece of paper to establish base dish shape or use provided pattern.



2. Sketch out animal form using the traced circle as your base and cut out shape or use a provided pattern.

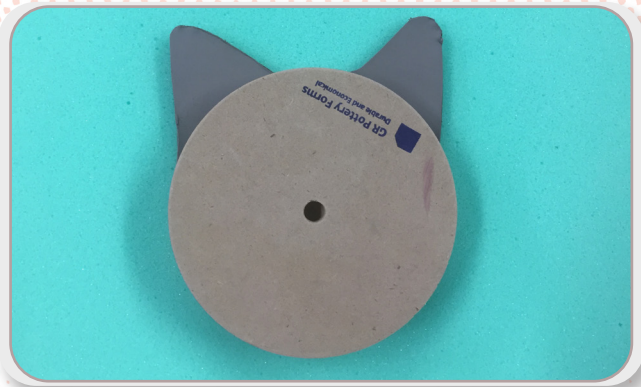


3. Roll out a slab that is about 1/8" thick and compress with rib.
4. Place animal shape down on slab and trace with needle tool.
5. Cut out shape from slab.

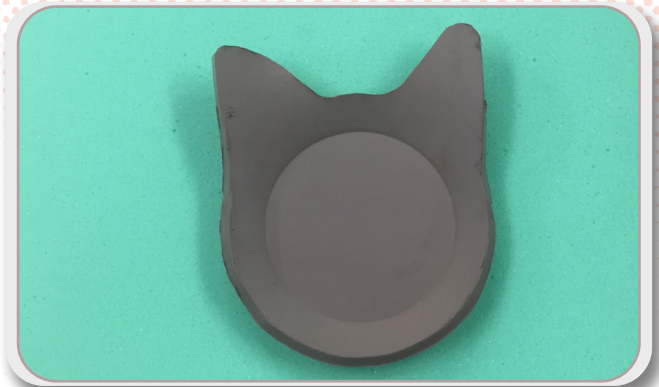


6. Smooth out cut edges with sponge.
7. Place slab on top of foam.
8. If using something that you don't want to get clay on, lay a piece of plastic down in between your foam and clay.

LESSON PLAN: **ANIMAL POOF DISH**



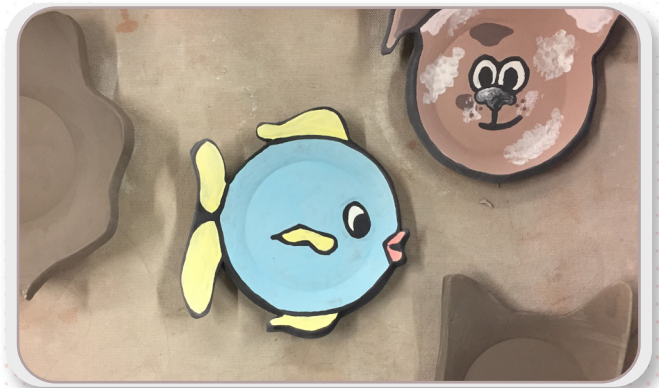
9. Place GR from small side down on top of clay in the center of your animal shape.



10. Press down firmly on the GR form and release.
11. Remove GR form revealing dish.



12. Clean up with sponge.
13. Paint on design using 2-3 coats of Stroke & Coat.
14. Allow coats to dry in between applications.



15. Allow to dry fully and once fire to Cone 06.
16. Glaze will fire glossy.



