

LESSON PLAN:

TISSUE PAPER UNDERGLAZE TRANSFERS

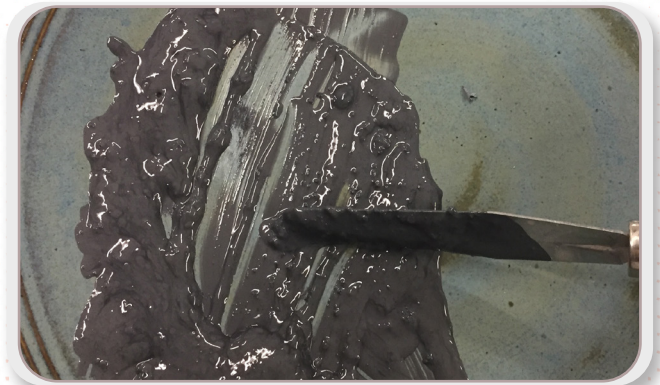
PRODUCTS AND TOOLS USED

- Low-fire white clay (LEM100 or S105) or bisque
- Tissue Paper
- DSS-0111 Botanical Leaves Silkscreen
- Palette Knife
- Sponge
- Spray Bottle
- Rib
- Brushes for glazing

COLOR USED

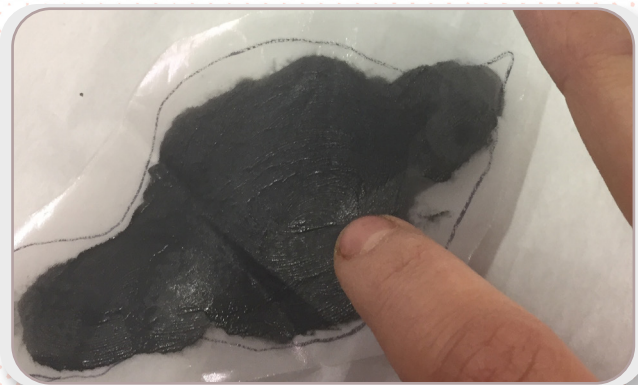
- Ug-50 Jet Black
- UG-32 Cocoa
- UG-82 Tucson Turquoise
- UG-210 Forest Green
- UG-220 Sage

Silkscreen Design



1. Mix desired underglaze (We used Jet Black UG-50) with a small amount of Silkscreen Medium (AC-310) with a pallet knife.

2. Sprinkle a small amount of silkscreen medium into underglaze at a time, mixing thoroughly with pallet knife until you achieve a "peanut butter" or "toothpaste" constancy.



3. Lay tissue paper on a dry surface. Choose desired silkscreen and place shiny side down on tissue paper.
4. Transfer screen by picking up a small amount of mixed underglaze paste on your finger and starting in the center rub underglaze through screen in small circles until screen design is fully covered.

5. Slowly pull screen away to reveal image.
6. Repeat to create your own pattern on the tissue paper.

LESSON PLAN: UNDERGLAZE TRANSFERS



7. Once dry, option to add color to the designs by adding one coat of an underglaze color into or overtop of the designs.
8. Let dry and store flat for use.



4. Once dry, option to add color to the designs by adding one coat of an underglaze color into or overtop of the designs.
5. Let dry and store flat for use.



3. Let dry and store flat for use.

Traced Pattern



1. Print out or draw desired pattern or design onto a paper that you can place under the tissue paper.
2. Lay tissue flat over the design.
3. Trace design with black underglaze using a brush.

Free-Hand

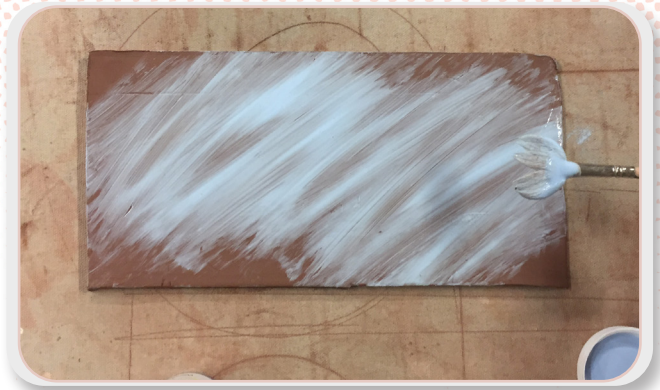
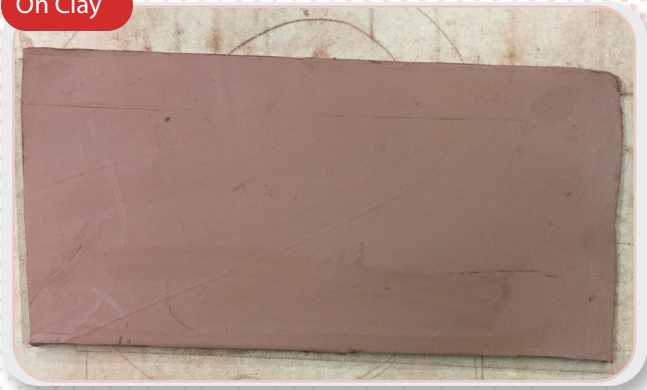


1. Lay tissue paper down flat on a dry surface.
2. Paint your own design or pattern onto the tissue with one coat of your desired color(s). Be sure not to apply underglaze thickly as it will crack off piece when fired.



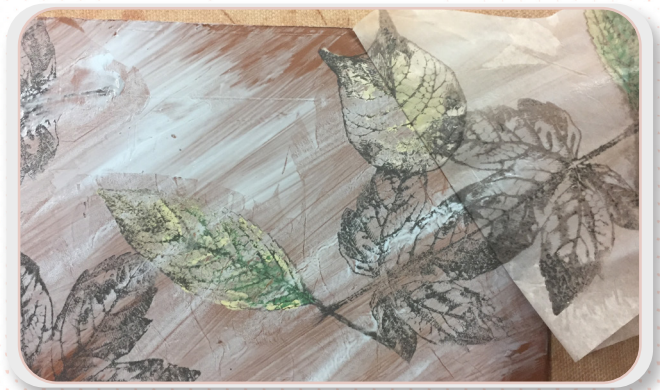
LESSON PLAN: UNDERGLAZE TRANSFERS

On Clay



1. Cut desired piece(s) of transfer design with scissors.
2. It is easier to work with multiple small pieces rather than one large piece, especially when transferring onto a curved surface.

3. Option to add one coat of underglaze to clay as a background color and let dry before starting transfer.
4. Place transfer in desired location on wet clay underglaze side down.



5. Press into place with fingertips gently at first to be sure that design lays flat onto clay.
6. Carefully smooth transfer down with a rib so that the paper is fully in contact with clay.

7. If clay is not wet enough to fully saturate the tissue transfer, mist the transfer with some water and continue to press down into clay. Adding too much water can cause transfer to smear, only add small amounts at a time.



8. Pull tissue back slowly to reveal design. Let dry and bisque piece to Cone 04 or apply clear coat overtop and once-fire.
9. We suggest applying 2 coats of Crystal Clear Brushing (S-2101) for low-fire clay bodies or Zinc Free Clear (SW-004) for mid-range clay bodies.

LESSON PLAN: **UNDERGLAZE TRANSFERS**



*Sample of traced pattern on clay



1. Wipe bisque with a damp sponge to remove dust.
2. Cut desired piece(s) of transfer design with scissors. It's easier to work with multiple small pieces rather than one large piece, especially on curved surfaces.



3. Place transfer in desired location on bisque underglaze side down.
4. Hold flat and mist with water until tissue is saturated. Only add small amounts at a time. Apply pressure with sponge to transfer image



5. Continue to add water and apply pressure little by little until transfer is successful.
6. Pull tissue back slowly to reveal design.
7. Allow to dry completely and fire to temperature of clay body used (05/06 or 5/6).



8. We suggest applying 2 coats of Crystal Clear Brushing (S-2101) for low-fire clay bodies or Zinc Free Clear (SW-004) for mid-range clay bodies.

