

LESSON PLAN

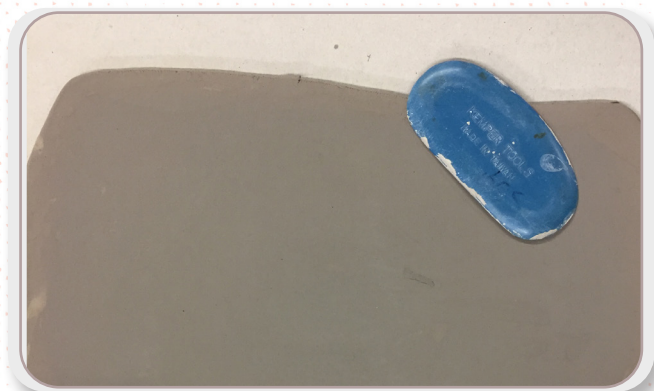
FOUND OBJECTS COLLAGE

PRODUCTS AND TOOLS USED

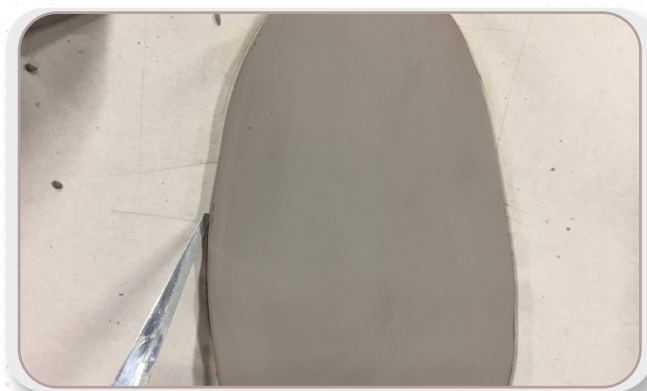
- Low fire white clay (EM 100)
- Bisque Plate (MB-1116 Casualware Dinner Plate)
- Water
- Sponge
- Brushes
- Pallet
- Pencil
- Collection of found objects for stamping
- Slab roller or rolling pin
- Fettling knife
- Texture roller (Xiem art roller- Doodles X10005)

COLOR USED

- SC-6 Sunkissed
- SC-11 Blue Yonder
- SC-15 Tuxedo
- SC-73 Candy Apple Red
- SC-98 Slime Time



1. Roll out a slab that is about 1/8" thick
2. Compress both sides of the slab with a rib



3. Draw desired plaque shape with your pencil tip on the clay, mistakes can be smoothed over with a rib and
4. Cut desired plaque shape using fettling knife



5. Smooth out cut edges with damp sponge
6. Add texture to your plaque with a texture roller by rolling in desired area



7. Add two holes at the top of your plaque for your hanging string. Push the back of your pencil into the clay to create holes at least 1/2" in from the top edge of the plaque and at least 4 inches apart
8. Clean up holes with damp sponge or finger

LESSON PLAN: **FOUND OBJECTS COLLAGE**



9. Allow plaque to dry slowly, lightly covered with plastic to keep piece from warping. Drying plaque between two ware boards can also help keep your piece flat



10. You can uncover plaque when it is no longer leather hard and allow it to continue to dry until bone dry
11. Bisque fire clay to Cone 04



1. Begin with properly fired cone 04 bisque. Moisten a sponge and wipe bisque to remove any dust
2. Use the pencil to draw different types of lines, dividing the piece into at least 4 sections



3. Using a liner brush or Soft Fan (depends on if your sections are large or small) 2 coats of glaze to each section, alternating all colors except SC-15 Tuxedo. Allow glaze to dry between coats



4. Once glaze is dry, take an item you found and brush it with SC-15 Tuxedo using the Script Liner or Soft Fan (depending on the size of the item). Gently press it onto a section of your piece and repeat



5. Sample each found item into desired sections of the piece
6. Once design is complete, allow glaze to dry fully and fire piece to Cone 06