

LESSON PLAN

MAGIC METALLICS PRINT MAKING

PRODUCTS AND TOOLS USED

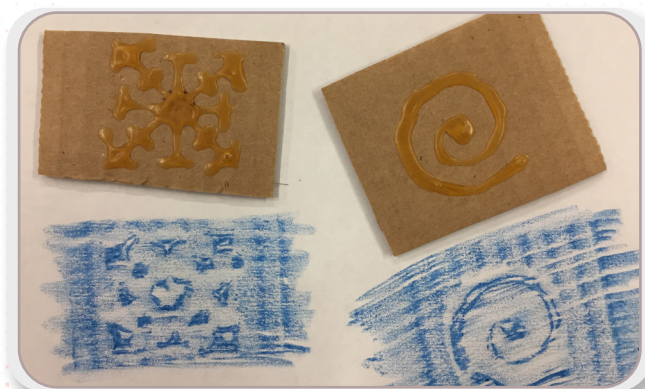
- Flat piece of Cardboard. You may also use any craft of ceramic surface
- RB-144 #4 Soft Fan Brush
- Soft Bristled Brush
- Leaves or alternative printing objects
- Sponge (Cut into small pieces)
- Scrap Paper

COLOR USED

- Flat Black (SS-138 or Alternative Background Color: Accent Green (SS-57)
- Copper Metallic (MM-102)
- Gold Metallic (MM-105)
- Green Patina (MM-202)



1. To make stamp: Cardboard and liquid glue (such as Elmer's or wood glue)
2. Cut a desired size of cardboard large enough for your stamp design



3. Draw design with liquid glue and let dry completely
4. Check design by placing under paper and rubbing crayon overtop to reveal design
5. Add more glue if needed



6. Prepare your craft surface.
7. Using a soft bristled brush, apply one coat of Flat Black (SS-138) or other desired base coat color to front of cardboard.
8. Let dry completely

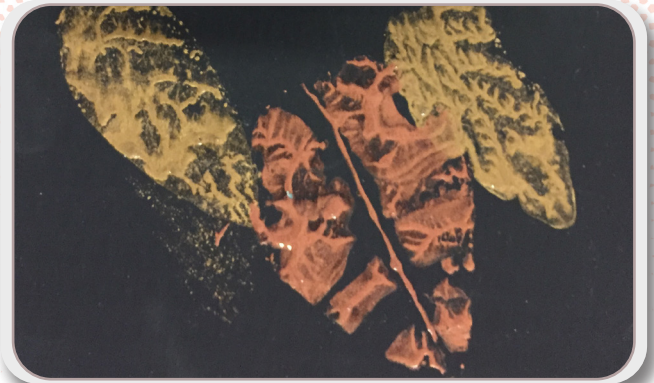


9. Printing:
10. Using one leaf at a time, sponge desired color of Magic Metallic (Copper Metallic MM-102 or Gold Metallic MM-105) onto leaf (or other printing object) using a small flat sided sponge. You may want to cut a larger sponge into small pieces

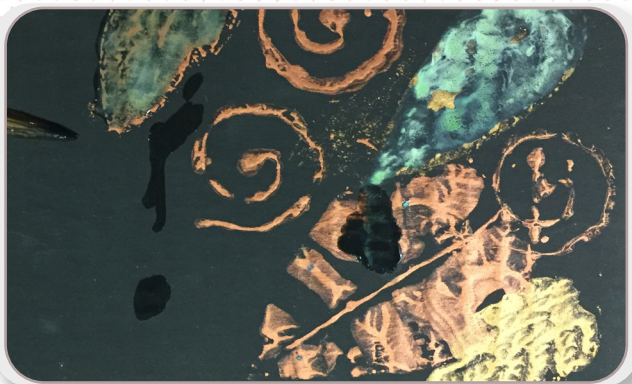
LESSON PLAN: **MAGIC METALLIC PRINT**



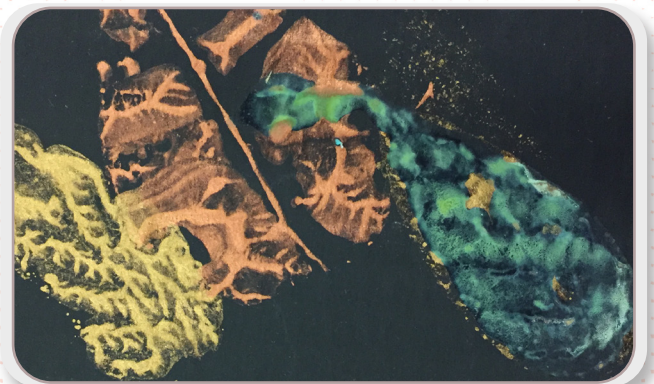
11. When ready to print your leaf, apply desired amount of metallic paint to your leaf and place it paint side down onto your prepared cardboard surface



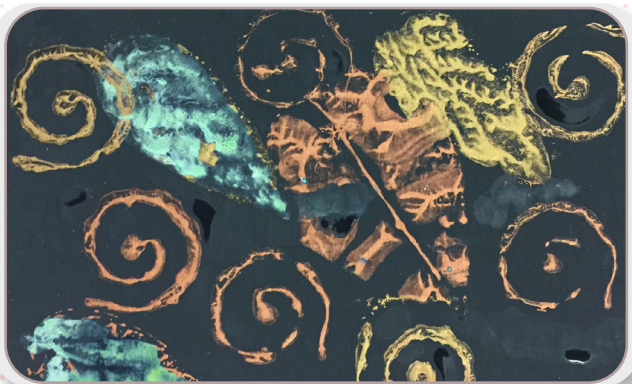
12. Press leaf down with your clean sponge as you did when test printing, then pull leaf back to reveal print
13. Continue to print leaves of different sizes and shapes using both of the Magic Metallic colors



14. To create a patinaed leaf, print leaf with Magic Metallic paint as instructed, immediately after pulling the leaf back to reveal your print lay a layer of Green Patina (MM-202) on top of the wet paint with a brush.



15. Watch the Green Patina color develop as oxidation occurs. For oxidation to occur the Green Patina liquid must be applied while the metallic paint is wet



16. Any metallic paint layered over an area where wet Green Patina liquid is will also patina
17. Continue to print leaves using all printing techniques above until you are satisfied with your composition



18. You can touch up any areas of un-wanted metallic marks with a single coat of the acrylic used for your background color