

Envision Sunflowers

Designed by Arlene Smith, Duncan Ambassador



Project Bisque: Mayco 132 Oval Platter

Project Colors: Best of Duncan

Envision Glaze:

IN1003 Sun Yellow

IN1005 Ruby Red

IN1015 Caribbean Blue

IN1065 Light Turquoise

IN1693 Espresso

IN1781 Pumpkin Orange

French Dimensions:

FD 254 Black Licorice

Brushes:

Glaze Brush

No. 1 Liner

No. 4 Round

Miscellaneous

Clay Carbon

Palette for Paint

Paper Towels

Red Pen

Water Container

Replacement Sponge

Instructions:

1. Trace pattern on piece with red pen using clay carbon. Note: Before removing pattern raise up partially to make sure the pattern is completely traced.
2. With a damp sponge lightly wipe the piece to remove dust and to condition the piece ready to paint.
3. Using French Dimensions, shake and test on a paper towel making sure you have an even flow of product. Holding tip at a 45% angle to the plate outline the pattern. When done all lines should be touching so glaze will stay contained. Allow to dry.
4. Place on palette Pumpkin Orange, Ruby Red, and Sun Yellow.
5. One petal at a time; using a liner brush, puddle Sun Yellow from top of each petal, continue until the product is 1/3— 1/2 down the petal then pick up Pumpkin Orange on the brush and puddle in the remainder of the petal.
6. With the tip of the brush pull the two colors back and forth from center to tip - blending the two colors.
7. Repeat step 5 and 6 until all petals are completed.
8. Please make sure that all glaze inside the petals is butted up against the piping, if not the color could pull back.
9. Using Ruby Red and liner brush, pull color onto each petal giving accent lines, refer to photo 1.
10. Using Pumpkin Orange and liner, puddle in the outer circle of center.
11. Add Espresso to the palette and with liner brush, puddle in the inner circle of the center.
12. Again, check and make sure all glaze is touching piping.
13. Add Light Turquoise and Caribbean Blue to the palette.
14. On the top of plate: puddle in Light Turquoise to the entire background. Allow to dry, then brush a light coat of Caribbean Blue over the Light Turquoise only.

15. Back of plate: with brush apply 2 coats of Light Turquoise, let dry. Using the same brush, apply 1 coat of Caribbean Blue on top of the Light Turquoise.
16. With French Dimensions apply dots to the center of flowers, this includes both the Pumpkin Orange and Espresso. Also put a few dots out on the petals, refer to photo 2.
17. Allow to dry overnight, then stilt and fire to shelf cone 06.
18. Remember to remove stilt marks.
19. Enjoy.

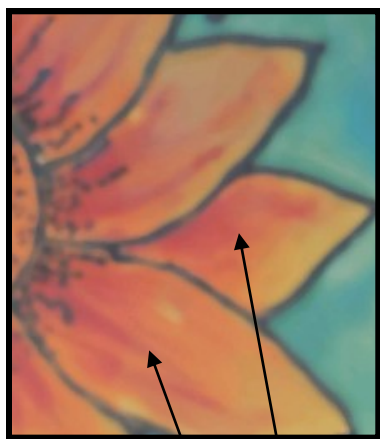


Photo 1— adding Ruby Red Accent Lines.

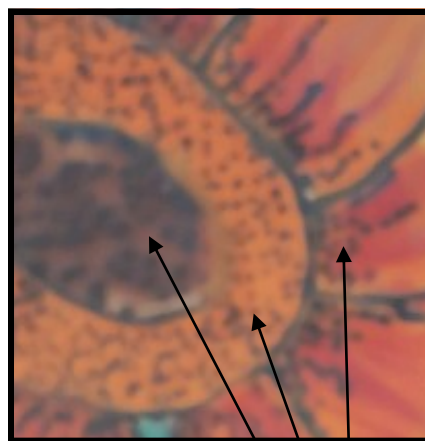
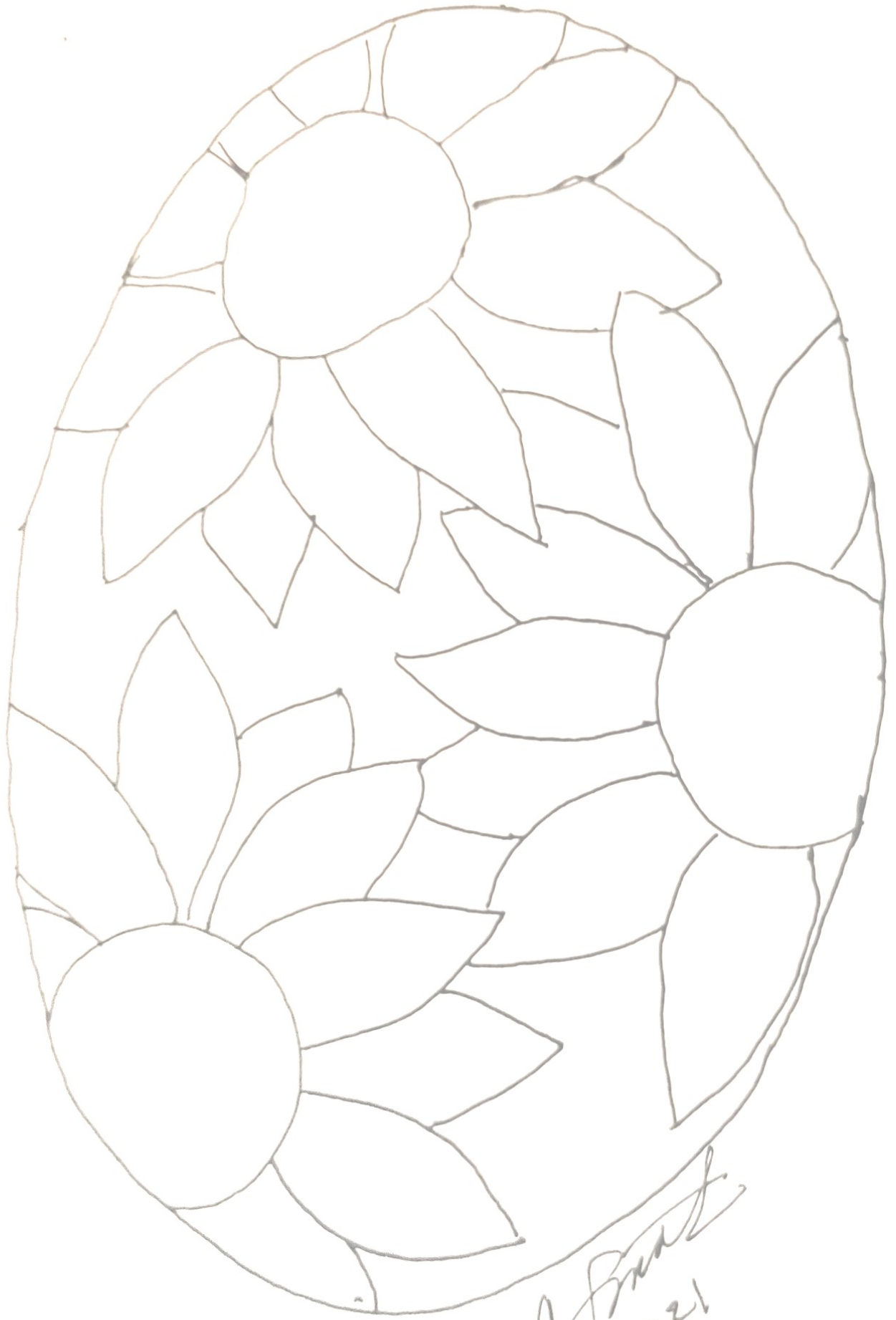


Photo 2—adding French Dimensions Black Licorice



A. Smith
2021