

5 REASONS TO SELL STONEWARE

1

MICROWAVE SAFE



2

OVEN SAFE

Place in a cold oven and warm up with the oven to prevent thermal shock.



3

DISHWASHER SAFE



4

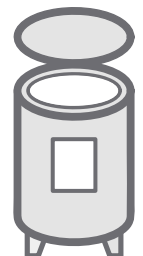
DOES NOT ABSORB MOISTURE



5

NEW FIRED ART

Appeal to a different audience! Stoneware is a trendy, long-lasting and durable fired art form that can't be found in the big box stores.



STONEWARE

BEFORE THE CUSTOMER GLAZES



STEP 1

Unpack the bisque, which is soft fired to cone 04.



STEP 2

Do a visual and ping test inspection while holding piece for hairline cracks before placing for sale.



STEP 3

Use a damp sponge to wipe off any dust on the piece before placing on the shelf.

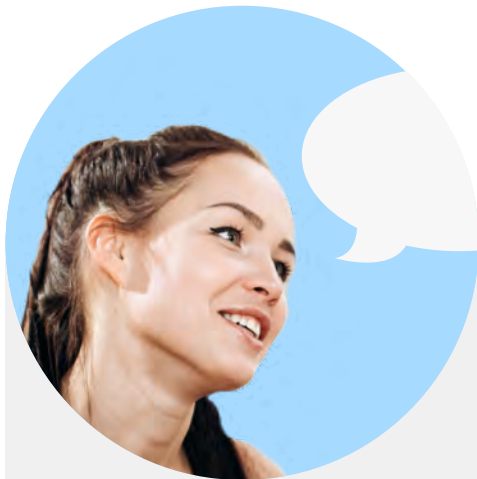


STEP 4

Do not stack more than two high to avoid hairline fractures.

STONEWARE

WHILE THE CUSTOMER GLAZES



STEP 1

Give verbal instructions
i.e. Use a soft fan brush,
fully load the brush, etc.



STEP 2

Let customer select
Stoneware glazes.



STEP 3

Demonstrate how to
properly load the
soft fan brush.



STEP 4

Check in with customer
to make sure they are
not glazing the bottom
of the bisque.

STONEWARE

AFTER THE CUSTOMER GLAZES



STEP 1

Provide a damp sponge and fresh water to clean off the bottom and bottom edge of the piece.



STEP 2

Use Designer Liner to write names or initials on the bottom.

*Designer Liner will not stick to the kiln shelf.



STEP 3

Set on a clean drying shelf dedicated only for STONEWARE.



STEP 4

Let dry.

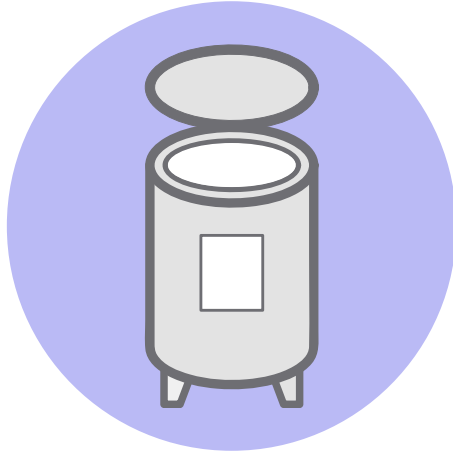


MaycoColors.com



HOW TO FIRE STONEWARE

- Only Fire on CLEAN, debris-free, kiln-washed shelves (Use AC-001 Kiln Wash).
- Handles point away from the elements.



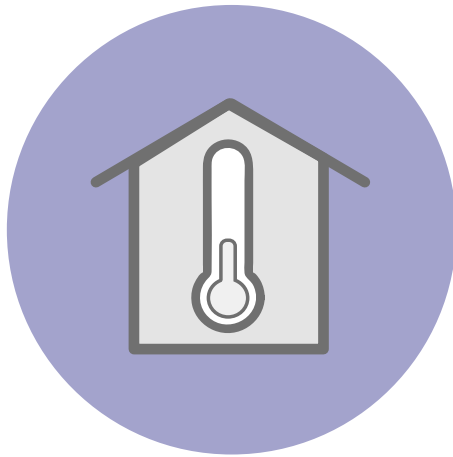
- The base of the piece should be fully on a single shelf and not hanging off.
- Stoneware must be at least 2" from elements.

LOAD



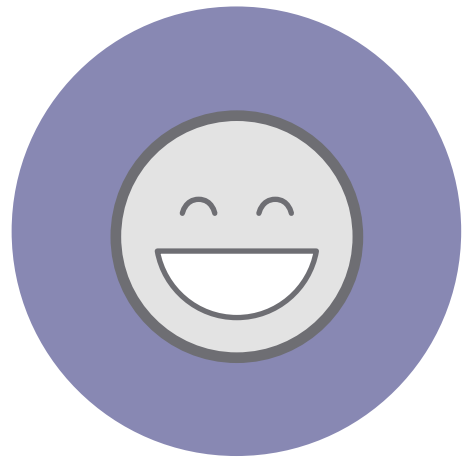
FIRE

Fire to cone 6 - 2232°F (NOT 06) on medium speed with a cone 6 witness cone.



COOL

Let cool to at least 150° F before opening the kiln lid. Room temperature is ideal.



UNLOAD

Give to the customer and watch them smile!