

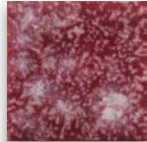
LOW-FIRE COMBO

EL-130 Sea Green

Cone 06



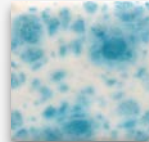
Technique was achieved by brushing on two (2) layers of base glaze (EL-130 Sea Green). Then apply two (2) layers of top glaze, letting glazes dry between coats.



CG-783
Strawberry Sundae

over

EL-130
Sea Green



CG-788
Dutch Enamelware

over

EL-130
Sea Green



CG-962
Blue Azure

over

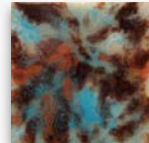
EL-130
Sea Green



CG-963
Lemon Lime

over

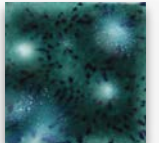
EL-130
Sea Green



CG-965
Mocha Marble

over

EL-130
Sea Green



CG-974
Bloomin' Blue

over

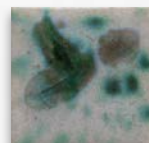
EL-130
Sea Green



CG-981
Fruity Freckles

over

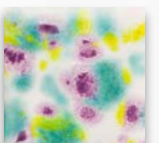
EL-130
Sea Green



CG-996
Spring Rain

over

EL-130
Sea Green



CG-999
Jazz Notes

over

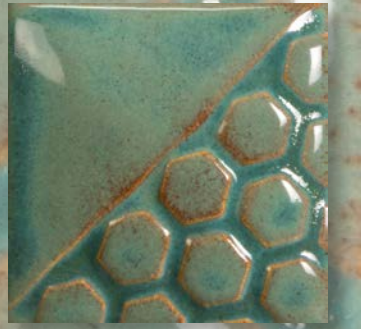
EL-130
Sea Green



LOW-FIRE COMBO

EL-130 Sea Green

Cone 06



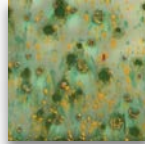
Technique was achieved by brushing on two (2) layers of base glaze (EL-130 Sea Green). Then apply two (2) layers of top glaze, letting glazes dry between coats.



S-2701
Peacock Eyes

over

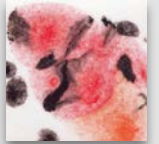
EL-130
Sea Green



S-2714
Herb Garden

over

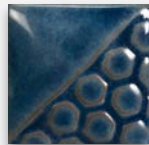
EL-130
Sea Green



S-2727
Poppy Fields

over

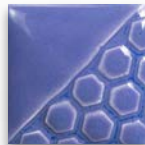
EL-130
Sea Green



EL-118
Blue Grotto

over

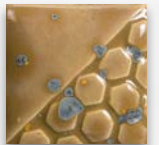
EL-130
Sea Green



EL-151
Deep Water

over

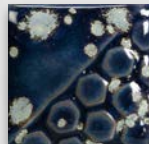
EL-130
Sea Green



EL-207
Gold Mine

over

EL-130
Sea Green



EL-209
Night Sky

over

EL-130
Sea Green

MB-1556 Textured Bud Vases shown are fired to Cone 06.



MaycoColors.com

