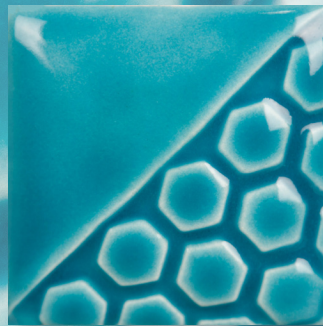




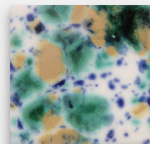
# LOW-FIRE COMBO

EL-153 Caribbean Blue

Cone 06



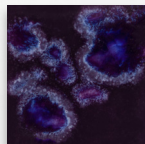
Technique was achieved by brushing on two (2) layers of base glaze (EL-153 Caribbean Blue). Then apply two (2) layers of top glaze, letting glazes dry between coats.



CG-722  
Seawind

**over**

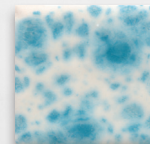
EL-153  
Caribbean Blue



CG-785  
Royal Fantasy

**over**

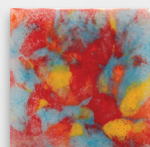
EL-153  
Caribbean Blue



CG-788  
Dutch Enamelware

**over**

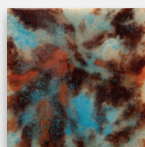
EL-153  
Caribbean Blue



CG-964  
Kaleidoscope

**over**

EL-153  
Caribbean Blue



CG-965  
Mocha Marble

**over**

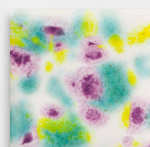
EL-153  
Caribbean Blue



CG-997  
Seafoam

**over**

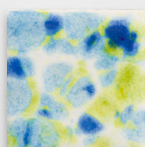
EL-153  
Caribbean Blue



CG-999  
Jazz Notes

**over**

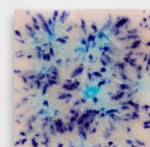
EL-153  
Caribbean Blue



CG-1001  
Gogh Iris

**over**

EL-153  
Caribbean Blue



S-2702  
Northern Lights

**over**

EL-153  
Caribbean Blue



MB-1556 Textured Bud Vases shown are fired to Cone 06.

MaycoColors.com

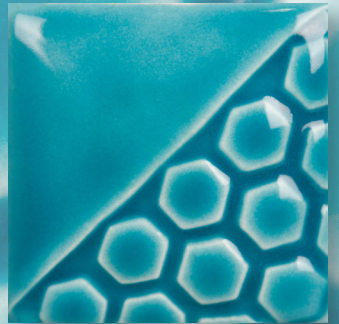




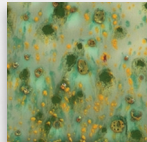
# LOW-FIRE COMBO

## EL-153 Caribbean Blue

## Cone 06



Technique was achieved by brushing on two (2) layers of base glaze (EL-153 Caribbean Blue). Then apply two (2) layers of top glaze, letting glazes dry between coats.



S-2714  
Herb Garden

**over**

EL-153  
Caribbean Blue



EL-101  
Oyster Shell

**over**

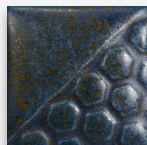
EL-153  
Caribbean Blue



EL-118  
Blue Grotto

**over**

EL-153  
Caribbean Blue



EL-124  
Stormy Blue

**over**

EL-153  
Caribbean Blue



EL-128  
Wheat

**over**

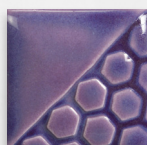
EL-153  
Caribbean Blue



EL-142  
Grass

**over**

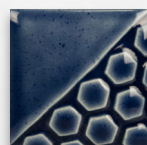
EL-153  
Caribbean Blue



EL-149  
Lavender Flower

**over**

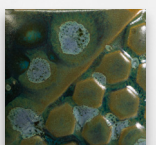
EL-153  
Caribbean Blue



EL-152  
Denim Blue

**over**

EL-153  
Caribbean Blue



EL-208  
Moss Creek

**over**

EL-153  
Caribbean Blue