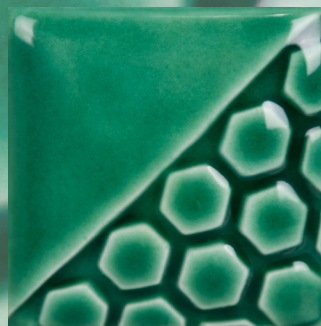




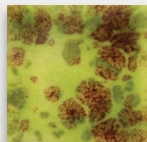
# LOW-FIRE COMBO

EL-154 Sea Mist Green

Cone 06



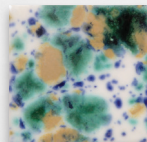
Technique was achieved by brushing on two (2) layers of base glaze (EL-154 Sea Mist Green). Then apply two (2) layers of top glaze, letting glazes dry between coats.



CG-717  
Pistachio

**over**

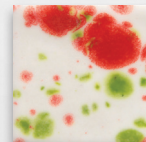
EL-154  
Sea Mist Green



CG-722  
Seawind

**over**

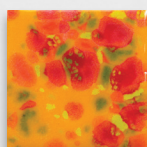
EL-154  
Sea Mist Green



CG-750  
Noel

**over**

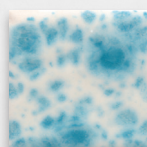
EL-154  
Sea Mist Green



CG-753  
Sassy Orange

**over**

EL-154  
Sea Mist Green



CG-788  
Dutch Enamelware

**over**

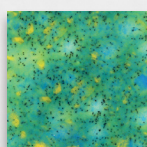
EL-154  
Sea Mist Green



CG-965  
Mocha Marble

**over**

EL-154  
Sea Mist Green



CG-979  
Meadow

**over**

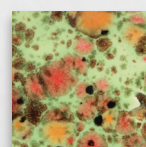
EL-154  
Sea Mist Green



CG-981  
Fruity Freckles

**over**

EL-154  
Sea Mist Green



CG-982  
Mixed Melon

**over**

EL-154  
Sea Mist Green



MB-1556 Textured Bud Vases shown are fired to Cone 06.

MaycoColors.com



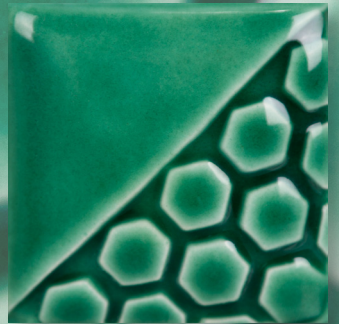




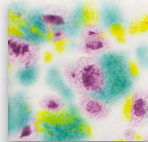
# LOW-FIRE COMBO

EL-154 Sea Mist Green

Cone 06



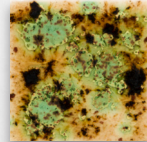
Technique was achieved by brushing on two (2) layers of base glaze (EL-154 Sea Mist Green). Then apply two (2) layers of top glaze, letting glazes dry between coats.



CG-999  
Jazz Notes

**over**

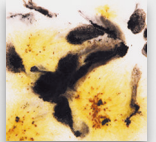
EL-154  
Sea Mist Green



S-2709  
Cappuccino Mint

**over**

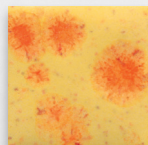
EL-154  
Sea Mist Green



S-2726  
Cheetah

**over**

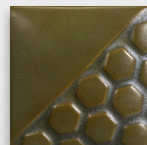
EL-154  
Sea Mist Green



S-2729  
Citrus Splash

**over**

EL-154  
Sea Mist Green



EL-113  
Spanish Moss

**over**

EL-154  
Sea Mist Green



MB-1556 Textured Bud Vases shown are fired to Cone 06.

MaycoColors.com

