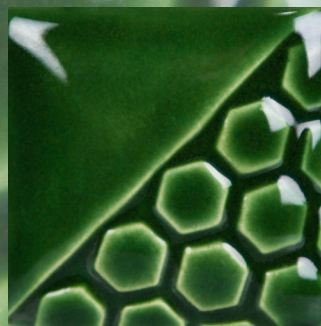


LOW-FIRE COMBO

EL-155 Holiday Green

Cone 06



Technique was achieved by brushing on two (2) layers of base glaze (EL-155 Holiday Green). Then apply two (2) layers of top glaze, letting glazes dry between coats.

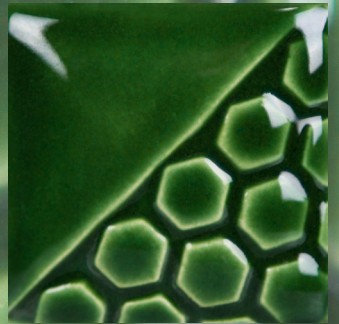
  <p>CG-722 Seawind over EL-155 Holiday Green</p>	  <p>CG-750 Noel over EL-155 Holiday Green</p>	  <p>CG-753 Sassy Orange over EL-155 Holiday Green</p>
  <p>CG-963 Lemon Lime over EL-155 Holiday Green</p>	  <p>CG-965 Mocha Marble over EL-155 Holiday Green</p>	  <p>CG-979 Meadow over EL-155 Holiday Green</p>
  <p>CG-981 Fruity Freckles over EL-155 Holiday Green</p>	  <p>CG-986 Smoke & Fire over EL-155 Holiday Green</p>	  <p>CG-997 Sea Foam over EL-155 Holiday Green</p>



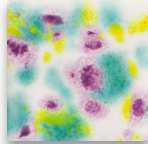
LOW-FIRE COMBO

EL-155 Holiday Green

Cone 06



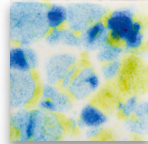
Technique was achieved by brushing on two (2) layers of base glaze (EL-155 Holiday Green). Then apply two (2) layers of top glaze, letting glazes dry between coats.



CG-999
Jazz Notes

over

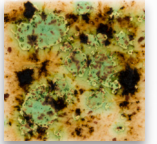
EL-155
Holiday Green



CG-1001
Gogh Iris

over

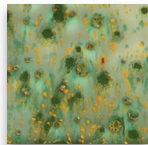
EL-155
Holiday Green



S-2709
Cappuccino Mint

over

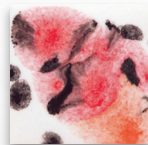
EL-155
Holiday Green



S-2714
Herb Garden

over

EL-155
Holiday Green



S-2727
Poppy Fields

over

EL-155
Holiday Green



MB-1556 Textured Bud Vases shown are fired to Cone 06.

MaycoColors.com

