



PRODUCT DISCOVERY



Revised June 24, 2019 © 2019 Mayco. All rights reserved. Duplication unlawful without express permission.



MaycoColors.com

TABLE OF CONTENTS

Preface	1
Safety & the Ceramic Arts	2
Laws & Regulations	4
Food & Drug Administration	9
Stroke & Coat® & Speckled Stroke & Coat®	11
Stroke & Coat® Accents	15
Foundations® Opaque, Sheer & Matte	17
Jungle Gems™	21
Elements™ & Elements™ Chunkies	24
Pottery Cascade™	28
Classic Crackles™	31
Designer Liner	34
Cobblestones	36
Snowfall	38
Sculpting Medium	40
Fundamentals Underglazes	42
Astro Gems™	46
Low Fire Clear Glaze – Brushing	48
Low Fire Clear Glaze – Brushing Speckta-Clear	51
Low Fire Clear Glazes – Dipping	53
Raku Glazes	57
Stoneware Glazes	59
Stoneware Crystal Glazes	62
Stoneware Gloss Glazes	64
Stoneware Specialty – Mudcrack	66
Stoneware Specialty – Magma	68
Stoneware Specialty – Flux	70
Mid-Range Clear Glazes	72
Stoneware Washes	75
AC-001 Kiln Wash	77
AC-302 Wax Resist	78
AC-306 Clay Mender	80

PREFACE

Our company has been dedicated to the pursuit of ceramic arts for over 65 years. Ceramics is our only business – our sole focus. As ceramics changes and evolves so does our company. Mayco’s product offerings have expanded greatly since our beginning with underglazes to now include glazes, acrylics, molds, bisque, decorating tools, and accessories.

Every type of ceramist uses Mayco products. From the novice to the professional, using our products in low-fire temperatures to high-fire reduction, and applying to clay or bisque surfaces. Ceramic users include hobbyists, art educators, PYOP (Paint Your Own Pottery) studios, fine artists and finished ware producers. Mayco products were developed to be enjoyed by all pursuits of ceramic activity.

The “science” of ceramics also changes. Materials change as regulatory agencies revise safety and usage standards for ceramic materials. These changes impact the glazes and clay bodies we use, which in turn impact how glazes and clay bodies interact during the firing process. Staying current is critical for all who participate in the art of ceramics.

Mayco strongly believes in staying current and keeping you current through technical support and educational programs, such as Product Discovery. We have provided this product training manual as a desktop reference for you to use in your business or studio. These guidelines are updated annually and reflect our recommendations for “best practices” for using Mayco products. We also acknowledge that experimentation with alternative application methods can result in “happy accidents” and new ways to use Mayco products. This is all part of the fun of ceramics!

We are committed to you and your continued success using our products. Our technical support service and design team are available to work with you to achieve a better understanding of our products, thus maximizing the performance. Please contact us with any questions at 614-876-1171 or email your questions to technical@maycocolors.com.

Thank you for your commitment to Mayco and know that you are using “America’s Finest Colors”.

– *The Mayco Team*

SAFETY & THE CERAMICS ARTS

All practitioners, manufacturers and purchasers of ceramics and pottery share a common concern for the safe use of ceramic materials, but defining “safe” and “safety” is forever changing. New studies and information are presented continuously, prompting government agencies to alter exposure limits to these chemicals, change product labeling, and so on. So what definitions of safety should we be concerned within the practice of ceramics?

Safety in a ceramic studio is defined by common sense and good studio practices as much as by-laws and regulations. Mayco provides up-to-date safety compliance with laws and regulations through product labels, SDS (Safety Data Sheets), Certificates of Compliance, REACH registration (for Europe), etc.

In pursuit of providing the highest degree of safety in ceramics, Mayco joined The Art and Creative Materials Institute, Inc. (ACMI) in May 2013. ACMI is a non-profit association of manufacturers of art, craft and other creative materials that sponsors certification programs for children’s and adult art materials, as required by product safety regulations, specifically “FHSA and “LHAMA” which governs the labeling of art materials. ACMI’s requirements for certification are more rigorous than other programs, such as voluntary testing for lead composition. More on labeling certification below.

The best way to ensure a safe studio environment is to adopt a series of “best practices” that minimize risks and exposures. In our Product Discovery Manual, we share thoughts on actions for you and your customers.

Below we’ll review some safety concepts, laws & regulations – and put them in perspective for your ceramic practice

HAZARDS IN CERAMICS

A hazardous chemical is a status: it is based on an assessment of the *intrinsic properties* of a chemical substance to cause harm, which is determined by scientific studies from hundreds of organizations throughout the world.

Hazards are divided into three groups:

1. **Physical** - chemical properties such as combustibility, explosiveness, flammability, oxidizing, and/or unstable or reactive.
2. **Environmental** - immediate or direct on environment or ecosystem; latent/indirect effect on environment and human life.
3. **Health** - immediate (acute) or latent (chronic) impact on the human body. With the adoption of GHS by OSHA in 2015 (GHS discussed later), health hazards – damage done to a human being – are classified as follows:
 - Acute Toxicity
 - Skin Corrosion/Irritation
 - Serious Eye Damage/Eye Irritation
 - Respiratory or Skin Sensitization
 - Germ Cell Mutagenicity
 - Carcinogenicity
 - Reproductive Toxicology
 - Target Organ Systemic Toxicity – Single Exposure
 - Target Organ Systemic Toxicity – Repeated Exposure
 - Aspiration Toxicity

A health hazard substance enters/impacts a human being in one of four ways:

1. Inhalation into the lungs
2. Absorption through skin
3. Absorption through the eyes
4. Ingestion via the mouth

What hazards might you encounter when using Mayco products?

1. Environmental hazards are present in dry stoneware glazes due to the presence of zinc oxide. Zinc Oxide can be disruptive to aquatic life and organisms.
2. Health hazards associated with Mayco products may be present when products are inhaled, touched in dry form or inhaled from spray application (wet form).

No Mayco products require labeling for acute toxicity. Silica requires labeling as a potential chronic toxin.

A WORD ABOUT SILICA

Silica is the second most common mineral in the earth's crust. It is a major component of sand, rock, and mineral ores like quartz. There are several types of silica. Two you may come in contact with in a ceramic studio might be "amorphous" silica – found in glass – and crystalline silica (quartz), found in every clay, glaze and piece of bisque. Most ceramic companies will list the CAS No. 14808-60-7 on their SDS as either Quartz or Crystalline Silica.

Long-term inhalation exposure to Crystalline Silica may lead to a condition called Silicosis. Silicosis is a chronic lung disease caused by breathing in tiny bits of silica dust. This silica dust can cause scar tissue in the lungs that cuts down your ability to breathe. In 2017 OSHA reduced the PEL (Permissible Exposure Limit) of silica by 50% - to 50 micrograms per cubic meter of air, averaged over an 8-hour shift.

Chronic silicosis, the most common type of silicosis, usually occurs after 10 or more years of exposure to crystalline silica at low levels. Inhalation is the only route of entry into the body that can cause Silicosis. Glaze, in the wet form, poses no inhalation danger unless spray applied. Spray application (spray creates mist, which can be inhaled) and mixing dry glazes can increase the chances for inhalation exposure and should never be done without the use of a NIOSH approved respirator.

Mayco has taken a "no spray application" policy on product labels – to address the risk of inhalation exposure. Future labels will be revised as they come up for reprinting. We understand that spray application is popular in some markets and can be done very safely by wearing a respirator. We will leave the decision to use spray application up to each consumer.

RISK = HAZARD X EXPOSURE/DOSAGE

Risk refers to the probability that an adverse effect will occur with specific exposure conditions. If you are using current ceramic materials and products, the greatest risk you'll face in a ceramic studio is the inhalation of dust. The amount needed to cause damage over 10+ years of exposure depends on the individual. The amount of dust exposure you will encounter in your ceramic studio will should be exceptionally low. But if you engage in an activity that creates dust: mixing dry glazes, cleaning greenware, spray application of glazes – wearing a respirator will limit your exposure and dramatically reduce your risk

LAWS & REGULATIONS

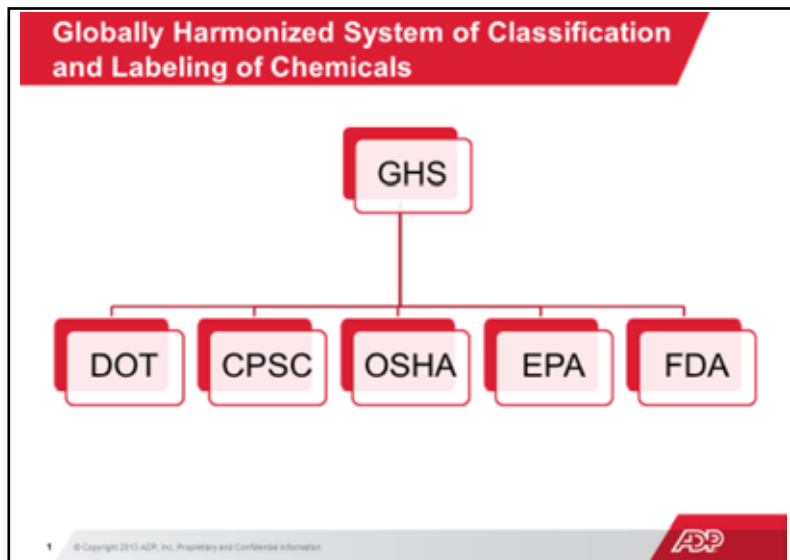
In this section we will briefly describe the roles and regulations of U.S. government agencies with respect to ceramic products and activities. State and local governments may also implement policies and regulations that impact ceramic activity. Mayco works diligently to make sure we are in compliance with all U.S., state and local laws, as well as with international laws and regulations, such as REACH in the EU.

GHS

Globally Harmonized System of Classification and Labelling of Chemicals (GHS) is a framework, an over-arching policy designed to standardize (or “harmonize”) all aspects of communicating about chemicals. All information, from the classification of materials to the phrases, labels, symbols we use, will become common throughout the world.

Each country that adopts GHS must decide which agencies are responsible for implementing aspects of GHS. In the U.S. there are 5 major agencies to whom this responsibility will fall:

As of this writing, Occupational Safety and Health Administration (OSHA) and the Department of Transportation are the only US agencies to implement GHS. The EPA and CPSC are in the process of developing a strategy to implement these standards. The adoption of GHS by OSHA prompted a revision of the MSDS, which is now SDS (Safety Data Sheets). **Until other agencies begin to adopt GHS, current U.S. regulations will remain unchanged.**



U.S. FEDERAL AGENCIES

The 5 agencies listed in the graphic above and their responsibility towards ceramic product usage and safety are:

- **Department of Transportation (DOT)** – specifies the requirements for the safe transportation of chemical substances or mixtures. Info you may need to know can be found in the new SDS, Section 14 Transportation Information;
- **Consumer Product Safety Commission (CPSC)** – oversees laws regulating product safety and the communication of such on consumer product labels, packaging, etc.;
- **Occupational Safety and Health Administration (OSHA)** – regulates *private* workplace safety and communications via the Hazard Communication Standard (29 CFR 1910.1200), under which MSDS/SDS are regulated. *Public* employee workplace safety (schoolteachers) is governed by state agencies – discussed below;
- **Environmental Protection Agency (EPA)** – concern for product impact on the environment (SDS Section 12: Ecological Information) and safe handling & disposal (SDS Section 13: Disposal Considerations);
- **Food & Drug Administration (FDA)** – administers the legal definition of *Food Safety* for ceramic and glassware manufacturers. These regulations specify lead and cadmium leach limits, which are listed below for your reference.

U.S. STATE & LOCAL AGENCIES

State and local agencies that can impact ceramic product usage and safety include:

- **State Departments of Public Employee Safety** – public employees are protected by a state agency in each of the 50 states. Some states operate programs officially sanctioned by OSHA, others manage OSHA-approved plans, and some manage independent plans. Consult your state government’s website for the type of plan used in your state.

- **Departments of Health (DOH)** – broadly stated, health departments exist to coordinate efforts at the local and state levels that assure conditions in which people can be healthy. These efforts can include
 - Providing public health leadership to communities
 - Educating people on ways to reduce their risk of disease
 - Collecting, analyzing and reporting data on health status and disease indicators
 - Identifying and correcting unhealthy or unsafe conditions in a public place, business or home

The last bullet – *identifying unhealthy or unsafe conditions* – provides DOH officials a broad brush to become involved in the operations of a ceramic studio. Certain health department regulations are very specific and codified: for example, those that pertain to restaurant and food service environments. Other are more loosely governed by policies of *general public nuisance*. GPN covers a wide variety of issues that can threaten the health, safety, comfort, convenience, or welfare of a community.

While public employee safety – i.e., schoolteachers – is protected/governed under state departments of employee safety, *student safety* is not. Departments of Health usually take responsibility for governing student safety on a school's premises. Student safety is a very grey area: as a general statement, specific laws and regulations do not exist. Given the lack of specific regulation, health officials can resort to any number of tools to guide them on matters of student safety. Our best advice is to be proactive with your local health officials and find out what their working definitions and sources of enforcement might be.

MSDS/SDS

OSHA oversees the preparing of safety data sheets (SDS) and industrial product labelling by virtue of the Hazard Communication Standard (29 CFR 1910.1200). HazCom is impacted by the adoption of GHA as follows:

- MSDS changed to Safety Data Sheets (SDS) on June 1, 2015. HazCom now mandates that all SDS sheets will use a 16-part format with specific information to be listed in each section (please review Appendix 1: OSHA Brief SDS).
- The format, warnings and symbols used on industrial product labels are required to change by December 1, 2015. An example of an industrial package is a 55-gallon drum. (Please review Appendix 2: OSHA Brief Labels & Pictograms)

Important to Note: Consumer product labels are administered by the CPSC; the relevant laws and regulations governing these labels are reviewed below.

To download reference materials and current updates on OSHA and HazCom, visit the HazCom landing page: <https://www.osha.gov/dsg/hazcom/>

A WORD ABOUT SDS

The purpose of the SDS are for manufacturers to communicate potential hazards to businesses that use their products. As such, the SDS are *not intended* for use by consumers. The fact of the matter is the SDS have become the *de facto* standard for presenting chemical information for all users of a product. Given that SDS usage has become more widespread we'll take a moment to point out the key sections with which you should be most familiar. As suggested above: review appendices 1 & 2, go to OSHA's HazCom website for additional information.

- **Section 2: Hazards Identification** – here you will learn of hazards associated with a product, the type of hazard represented, and the hazard and precautionary warning to heed;
- **Section 4: First Aid Measures** – specific instructions for addressing each type of exposure (dermal, inhalation, ingestion, eye contact)
- **Section 8: Exposure Control/Personal Protection** – recommendations for personal protective equipment (PPE) in specific cases of product usage (with respect to Mayco products: we address using a respirator when mixing dry materials or during spray application).
- **Section 16: Other Information** – Mayco uses this section to provide common allergy warnings and other consumer-oriented information.

CONSUMER SAFETY

Consumer safety laws and regulations are administered by the following three agencies: Consumer Product Safety Commission (CPSC), the Food and Drug Administration (FDA) and Departments of Health. In this section we'll look at the main regulations and laws administered by CPSC.

The Consumer Product Safety Commission (CPSC) oversees product safety regulations and the communication of product warnings (primarily through package labels). With respect to ceramic products, the significant CPSC regulations are:

- **Federal Hazardous Substances Act (FHSA)** – originally passed in 1960, this law required products containing acute health hazards to display mandatory warnings on their labels.
- **Labeling of Hazardous Art Materials Act (LHAMA)** – FHSA was amended on November 18, 1988 with the addition of LHAMA (Sec 23 Labeling of Art Materials [15 U.S.C. §1277]). LHAMA established that art materials sold in the U.S. must be evaluated by a qualified toxicologist for chronic toxicity according to the chronic hazard labeling standard, ASTM D 4236. The Code of Federal Regulations (CFR), Title 16 – Commercial Practices, Chapter II – Consumer Product Safety Commission defines the practices of the agency. Part 1500 – Hazardous Substances and Articles; Administration and Enforcement Regulations contain the pertinent regulations for art materials.
- **Consumer Product Safety Improvement Act of 2008 (CPSIA)** – further amended FHSA to require Certificates of Conformity.

The labeling of art materials under FHSA and LHAMA is as the consumer is exposed to it. For us, it is the wet form of the glazes and acrylics- identifying any health risks the consumer may have in the use of the product.

As a member of ACMI, the toxicological staff at Duke University evaluates our formulas in accordance with LHAMA. Products bearing the "AP" Seal are certified as safe and to contain no materials in sufficient quantities to be toxic or injurious to humans, including children, or to cause acute or chronic health problems. Some glaze formulas contain a substance, such as soluble copper, which can present a health risk to the user and thus requires a Caution Label (CL). Glazes which feature a "CL" label will note the ingredient requiring the label and what precautions a consumer should take. CL products should not be used by children in grade 6 or lower.



CERTIFICATES OF CONFORMITY

The CPSIA of 2008 amended many sections of several federal laws; the laws pertaining to the labeling of art materials (LHAMA) did not change.

The most significant impact of CPSIA of 2008 for art materials marketers was the requirement that a General Conformity Certificate (GCC) must be prepared for products "primarily intended" for use by children. This certificate is the documentation that shows that the product has been tested and meets appropriate standards. The certificate must accompany the product(s) either in paper or electronic form. The Commission intends to initially focus enforcement efforts on compliance with the underlying safety rules, rather than on the certificate or form of the certificate itself." (CPSIA Guide for Small Businesses, Resellers, Crafters, and Charities, Feb. 2009, pg. 5)

GCC's are available from the Mayco website: Education>Certificates of Conformity.

CPSC PUBLICATIONS

The CPSC provides a great many pamphlets and advisories for you to download. The main index for publications can be found here:

http://www.cpsc.gov/cpsc/pub/pubs/pub_idx.html

Particularly useful is document number 5015:

[Art and Craft Safety Guide \(http://www.cpsc.gov/cpsc/pub/pubs/5015.pdf\)](http://www.cpsc.gov/cpsc/pub/pubs/5015.pdf)

FOOD & DRUG ADMINISTRATION

The Food and Drug Administration (FDA) issues a series of Compliance Policy Guides (CPG) that explain policy on regulatory issues related to the FDA laws or regulations, primarily "Food Safe". Specific to ceramic products and supplies:

- CPG Sec. 545.400 Pottery (Ceramics); Import and Domestic - Cadmium Contamination: delineates the acceptable test methods and levels of cadmium leach that is permissible
- CPG Sec. 545.450 Pottery (Ceramics); Import and Domestic - Lead Contamination: delineates the acceptable test methods and levels of lead leach that is permissible

Please note: it is NOT illegal for a foodware item to contain traces of lead or cadmium as long as these substances test below the thresholds established in these guidelines.

A NOTE ABOUT FOOD SAFETY

"Food safe" seems to be one of the most confusing concepts for ceramic studios. It can be used differently among manufacturers, which leads to the confusion. Key points to remember:

- "Food Safe" refers to the glaze in its final, fired state.
- "Food Safe" is a regulation and is defined by the Compliance Policy Guide, which is maintained by the FDA (see above). Further information follows.
- Only applies to lead and cadmium release.

CPG LEVELS – LEAD & CADMIUM

(The following excerpt is reprinted from the Society of Ceramic and Glass Decorators (SCGD) advisement, February 2008, 15th Edition)

"In November 1991, the U.S. Food and Drug Administration (FDA) announced revised standards for lead leaching from the food contact surface of five categories of ceramic food ware. These standards set the maximum level of leaching. The standards are contained in FDA's Compliance Policy Guide (CPG) and have not been issued by FDA as formal regulations. We note that they apply only to the food contact surface. These limits are not applicable to non-food contact areas such as the outside of a mug or canister.

The standards for lead are:

1. Flatware - 3.0 parts per million
2. Small Hollowware - 2.0 parts per million
3. Large Hollowware - 1.0 part per million
4. Cups and Mugs - 0.5 part per million
5. Pitchers - 0.5 part per million

The standards for cadmium are:

1. Flatware - 0.5 part per million
2. Small Hollowware - 0.5 part per million
3. Large Hollowware - 0.25 part per million

The FDA Compliance Policy Guide states that the FDA will use as an analytical method for measuring leaching that prescribed by the Association of Official Analytical Chemists as Official Methods of Analysis, 15th Ed. (1990), section 973.32. American Society for Testing Materials (ASTM) method C-738 is essentially the same method.

The lip-and-rim area of a glass tumbler or ceramic mug or cup is considered the top 20 millimeters of the outside of the item - the area the lips might touch while consuming a beverage.

SGCD worked with the FDA (as well as the Consumer Product Safety Commission and the Environmental Protection Agency) to develop standards for the leaching of lead and cadmium from the lip and rim area. The voluntary standard was officially recognized by FDA in a notice published in the Federal Register which also indicates that test method American Society for Testing Materials ASTM C-927-80 should be used." *Copyright: Society of Glass and Ceramic Decorators*)

FOOD SAFE vs. DINNERWARE SAFE vs. NOT SUITABLE FOR DINNERWARE DUE TO SURFACE CHARACTERISTICS:

As mentioned above, there are some dissimilarities in how we ceramic manufacturers use definitions of food safe, dinnerware safe and other safety related information. Following is Mayco's approach:

- *"Food Safe"* refers to the glaze in its final, fired state. If a product has a food safe designation, we have conducted testing on the individual glaze (or similar in formulation), which has passed standards for food safety when used according manufacturer's direction. Finishedware producers bear responsibility for food safe testing their ware being sold into commerce.
- *"Dinnerware Safe"* indicates the fired glaze surface meets the FDA standards for food safe AND the clay body and glaze are compatible, producing a glaze surface chemically durable & free of surface texture.
- *"Not Suitable for Dinnerware due to Surface Characteristics"* is a term we use to describe situations where it may not be desirable to use a particular glaze for dinnerware even though it has passed the food safe testing process . Much of this falls under common sense or practicality.

Earthenware and other porous bodies: Certain glazes may not be recommended for dinnerware produced from low fire earthenware clay bodies. These glazes can exhibit surface textures such as cracks, crevices or not be chemically durable. While the glazed surface may pass lead & cadmium leach tests, and therefore legally considered Food Safe, attempts to adequately clean the textured surface may cause the underlying porous ware to absorb water and fail.

Stoneware and Porcelain Mid-High Fire bodies: The same textured glazes that are not considered dinnerware safe for earthenware may be dinnerware safe if surface texture is eliminated when firing to higher temperatures.

Durability of Fired Glaze: Some glazes, regardless of surface texture or porosity of underlying clay body, will be designated as not suitable for dinnerware as the fired glaze surface is not durable and can be impacted by contact with food or liquids . While it may not be harmful, it is certainly not desirable . An example would be Stoneware Texture glazes or Cobblestones .

Specialty Firings: Regardless of the glaze used, ware created in specialty firings such as Raku are not considered suitable for dinnerware as the clay body is porous.

- *"Non-Toxic and Lead Free"* – These terms are featured on most of our liquid glaze labels . This statement lets you know that the product has passed toxicological examination and will not cause acute or chronic damage to the human body . It has nothing to do with food safety, which is a standard applied to the fired ware.

Q: So – if a glaze is non-toxic and lead free it shouldn't it automatically be considered food safe?

A: The application of a glaze, the environmental conditions in a kiln or studio, the materials used to make a clay body or slip can introduce contaminants that can make their way into the fired glaze surface. If you use a "food safe" glaze on products intended for food usage and that you intend to resell, you may be required to provide test results to your customers. Please consult the Consumer Product & Safety Guide prepared for Small Businesses, Resellers, Crafters and Charities for additional information:
<http://www.cpsc.gov/PageFiles/113995/cpsiasbguide.pdf>

A WORD ABOUT “NON-TOXIC” AND “LEAD FREE”

The Federal Trade Commission oversees product claims made via advertising and marketing materials. The “Green Products” trend in recent years has increased FTC activity with respect to guideline revisions, which they publish as the Green Guides. The most recent Green Guides was revised in 2012. Two concepts under constant scrutiny are “Free-Of” and “Non-Toxic” – with the trend being to be more restrictive on conditions for their use. In the 2012 FTC revised standard for using the term, “non-toxic”, they state that a product must be toxic to humans AND the environment. The conflicts created by government agencies as they adopt competing standards and definitions concern Mayco, and we will be monitoring our use of phrases “Lead Free” and “Non-Toxic” going forward.

GENERAL PRODUCT INFORMATION

Quality Pledge: All Mayco products are designed and factory tested to meet our standards of quality and performance. We guarantee that every product we ship will perform in accordance with our recommended usage guidelines and we will replace any product at no cost that is proven defective because of manufacture.

The official sanctioned conditions under which each product was designed to perform is listed within this manual. We understand that desirable and interesting results can be obtained through non-standard uses of our products. Because of the variability in the chemical content of slip, temperature variation within kilns, organic materials used in glazes and other variables, we cannot warrant any product used in a non-standard manner. We cannot be responsible for any incidental or consequential damages that result. It is the responsibility of the end user to determine the suitability of a product for any non-standard use. We strongly recommend the test firing of glazes and/or application techniques new to the user, especially in commercial applications where large production quantities are used.

STROKE & COAT® &

SPECKLED STROKE & COAT®



Stroke & Coat® (The Wonderglaze) is the industry's most versatile product. It can be applied on wet clay, earthenware bisque or stoneware bisque, fired from cone 06 to cone 10, in oxidation or reduction and used in every decorative way imaginable. Stroke & Coat® can be the star of your work or play a supporting role to other glazes. It is the ideal product of choice for the studio, classroom, potter, and fine artist.

Speckled Stroke & Coat® glazes are Stroke & Coat® colors with small specks of contrasting hues to add dimension and visual appeal to your creations.

GENERAL USE

One coat will create a translucent finish with subsequent coats increasing opacity. We suggest 2-3 coats for opacity and all over coverage. Let dry between coats. Stroke & Coat® glazes on cone 04 bisque will fire to a gloss finish without clear glaze. However, if desired, a clear glaze may be added, such as Clear One Brushing (NT-BR) or Clear One Dipping (NT-CLR) for chrome-tin pigments, or Stoneware Clear (SW-001) when firing to cone 6. For application on clay, we recommend leaving an area unglazed, such as the back or bottom of the ware, to allow for out-gassing of water and organic material during the firing process. Stroke & Coat® glazes have been formulated to mature at shelf cone 06/05. Most Stroke & Coat® glazes will maintain their color at higher temperatures, especially reds, oranges, yellows, greens and blues. Their performance at cone 6 are noted on each individual product label. We recommend testing prior to use.

Stroke & Coats® are AP Non-Toxic, Food Safe and Dinnerware Safe when used according to manufacturer's directions.



AVAILABLE SIZES

- 2 oz. squeeze
- 8 oz. squeeze
- 16 oz. squeeze
- Gallons (available in 12 colors)

HELPFUL HINTS

- SC-13 Grapel, SC-33 Fruit of the Vine and SC-85 Orkid are formulated with chrome-tin pigments and can be sensitive to non-toxic clear glazes; namely – a milky/cloudy haze may form over the colors. Test by adding a light application of the clear glaze to these colors. These colors will not fade when used with Mayco's Clear One Dipping (NT-CLR) and Clear One Brushing (NT-BR).
- SC-70 Pink-a-Dot is more translucent than other Stroke & Coat® glazes. Additional coats (more than 3) may be necessary to achieve opacity.
- Stroke & Coat® glazes do not move or blend when used with other glazes. You can apply side-by-side or layer without losing integrity of design.
- Can be applied with a brush, sponge, detailer bottle, mats, stamps or silkscreens.
- Applying Matte Transparent Clear Glaze (C-300) will not make Stroke & Coat® matte.
- If you apply one coat of Stroke & Coat® on top of a matte glaze, the Stroke & Coat® fires matte. By applying 2-3 coats, the Stroke & Coat® fires glossy.

PRODUCT FEATURES



Glaze Combinations

Layer Stroke & Coat® glazes or use in combination with other glazes, such as Foundations®, Jungle Gems™, Elements™, or Stoneware glazes. The integrity of the design will remain as intended by the artist. When used in a majolica technique, colors will not move or blend with the colors underneath.



No Fail Reds

Stroke & Coat® reds are the best on the market. SC-73 Candy Apple Red, SC-74 Hot Tamale and SC-87 Ruby Slippers fire true to standard every time and do not require special application or attention during firing. These reds are great for kids, students at cone 06 and perfect for the potter looking for a red accent at cone 10.



Light Over Dark

Lighter colors can be used over dark colors, remaining bright and opaque and will not blend with the colors underneath.



On Greenware/Clay

Apply Stroke & Coat® glazes directly on wet or leather-hard clay, allow to dry, and fire to cone 04. Colors remain glossy and vibrant and save you time by removing the bisque fire step! For application on clay, we recommend leaving an area unglazed, such as the back or bottom of the ware, to allow for out-gassing of water and organic materials during the firing process.



Gloss without Clear Glaze

Stroke & Coat® glazes will fire to a gloss finish without a clear glaze! Clear glaze may be added if additional glossiness is desired or if the Stroke & Coat® glaze has not been applied consistently (insufficient overall coverage) to unglazed ware.



Sgraffito

This technique provides a dramatic way to use Stroke & Coat® glazes on your ceramics. Carve into the glaze to create depth, add contrast to your designs, and to reveal your colors below.



1, 2, 3 coats

One coat creates designs with translucent effects; additional coats add opacity. Stroke & Coat® glazes are heavily pigmented and will not streak, no matter the number of coats. Allow to dry between coats.



Wide Firing Range

Many Stroke & Coat® glazes perform well at mid-range (cone 5/6) and higher temperatures (cone 9/10). Darker colors such as red, orange, yellow, blue and green may darken compared to their cone 06 results. Lighter colors such as tan, purple and pink will fade. We recommend testing at your preferred firing temperature prior to use. Check label of specific color for performance at higher temperatures.



Speckled

Speckled Stroke & Coat® feature small specks of color added to the base glaze in the Stroke & Coat® line. Performing just as their counterparts, the specks provide a fun, visual interest.

APPLICATION RECOMMENDATIONS

The following application recommendations are based upon the original product development intent and use for the product. Information on alternative application methods is listed in the section "Usage Variations and FAQ's".

- Shake for 5-6 seconds before use. Dispense glaze onto a palette (tile, plate, etc.) and apply with your brush or decorating accessory of choice (sponge, stamp, etc.).
- For all-over coverage we recommend using broad bristled soft fan brush, such as CB-604 #4 or CB-618 #8 Soft Fan. Wet brush with water first.
- One coat will produce a translucent finish with subsequent coats increasing the opacity. For most applications three coats will be sufficient for complete opaque coverage. Follow contour of piece. Apply all coats in the same direction.
- When the wet looks has gone from the first coat you may apply the next coat of Stroke & Coat®.
- Let dry and fire to shelf cone 06 or 05. We do not recommend "force" drying (using a hair dryer, for example) as you may experience cracks or crevices in the fired finish.

USAGE VARIATIONS AND FAQ'S

Q: Do I have to use clear glaze to achieve a glossy finish?

A: Stroke & Coat® fires to a gloss finish and does not require clear glaze. Clear glaze may be used to enhance the glossiness of the fired finish. Apply the clear glaze according to manufacturer's directions over the unfired Stroke & Coat® and fire once. Note: The amount of clear glaze deposited can affect the fired results. If too much glaze and clear glaze is applied, you may experience dull or "milky" fired finishes. If this occurs, adjust the number of glaze layers applied, or lighten the amount of glaze on your brush to reduce the total amount of glaze placed on the ware. Do not apply clear directly on top of Stroke & Coat® if applied on clay. For pieces already fired - you may improve the fired finish by re-firing either at shelf cone 06 or cone 05 and adding a hold/soak time at the end of the firing cycle (10-15 minutes).

Q: Are Stroke & Coat® glazes luster compatible?

A: All colors are luster compatible.

Q: How can I create dimensional effects with Stroke & Coat®?

A: Stroke & Coat® will remain moderately dimensional when applied in a concentrated area. To create a raised line with a brush: layer 4 to 6 coats, allowing each coat to dry before applying the next. You can also use a detailer bottle or slip trailer to create raised lines: apply 2-3 layers, again allowing each layer to dry between applications.

Q: How do I achieve best results when applying Stroke & Coat® to greenware/clay?

A: Gases and moisture will escape from the greenware during firing, so it is best to leave a portion of the ware unglazed - for example: the back of a tile, the foot of a vessel - to avoid pin-holing or craters. If you do completely glaze a greenware piece you may also experience a dulling of the gloss finish. If this occurs, you can apply a clear glaze and re-fire to cone 06 or cone 05 to get a gloss finish. Always test to see if Stroke & Coat® will work on your specific greenware project.

Q: What are the guidelines for firing Stroke & Coat® to higher temperatures (cone 6 - cone 10)?

A: Many of the Stroke & Coat® colors perform well at mid-range (cone 5-6) and high (cone 9-10) temperatures. Darker colors - green, red, blue, orange, purple - will maintain much of their original color value (they may darken a bit compared to cone 06 results). Lightly pigmented colors - pink, yellow, tan, lighter purples - will fade. Always test to see if this application variance will work on your specific project. The cone 6 color information is found on the left-hand side of the label for each Stroke and Coat® color (under "Special Notes"). Mayco recommends testing for clay body compatibility prior to use on work.

Q: Can Stroke & Coat® be used with other products?

A: Stroke & Coat® glazes are compatible with all Mayco glazes and with many alternative brands of glazes. It is not recommended to do detailed design work on top of fluid, moving glazes, such as Jungle Gems™, Pottery Cascades™ or Elements™, as then work may become distorted.

Q: What makes Stroke & Coat® glazes different from other glazes?

A: Stroke & Coat® is a heavy-bodied glaze that levels out and heals imperfections during the glaze application process. It can withstand over firing without fading and it is tolerant of many types of bisque and clay bodies. Unlike other gloss glazes, it behaves more like a traditional underglaze as it “stays put” where it is applied. It’s like having 4 or 5 different glazes in one bottle - a Wonderglaze™ for bisque and clay.

LABEL DIRECTIONS

“Shake well. Apply 1 coat for translucent color or 2 or more for solid coverage. Allow to dry. Apply brush on or dipping glaze if desired. Allow to dry and fire to shelf cone 06 (999° C). Designed for bisque, but can be used on clay, greenware, and stoneware. Test first. Do not spray apply without proper personal protective equipment. Food Safe, Non-Toxic and Non-Hazardous when used according to manufacturer’s directions. For more information, refer to SDS at www.maycocolors.com.”

The Creative Choice

- 1 coat for translucency; 2-3 for opacity.
- Stable, non-moving. Will not blend into surrounding colors.
- Apply to bisque or clay. If on clay, leave the area unglazed for outgassing.
- Apply to earthenware or stoneware.
- Will fire to gloss finish without clear glaze.
- Fire to shelf cone 06-6. Check individual color label for performance at higher temps.
- Intermixable for custom colors.
- Can be applied with brush, sponge, stamp or in a slip trailer for raised, dimensional surface.
- Wet color is similar to fired color.
- Light colors will be opaque over dark colors.
- Great for glaze combinations including majolica technique.
- Non-toxic, non-hazardous and Food Safe.

SPECIAL NOTES:

Shake well. Apply 1 coat for translucent color or 2 or more for opaque coverage. Let dry. If ware is completely glazed, no clear glaze is required for gloss finish. If not, apply dipping or brushing clear glaze. Allow to dry. Fire to shelf cones 06 or 05 (999° C-1046° C). Can be fired at higher temperatures-check color label for cone 6 performance. Can be used on earthenware or stoneware bisque. Can be applied to clay, leaving an area open for outgassing. Suggest testing first. Do not spray apply without personal protective equipment. For complete safety data, MSDS and additional product information, please visit us at maycocolors.com. Food Safe, Non-Toxic and Non-Hazardous when used according to manufacturer’s directions.



Made in USA

No Toxics
Hecho en EE UU
Mayco Colors Contacts:
U.S. - Hilliard, OH 43026
(614) 876-1171
www.maycocolors.com
EU - Becklin Lane
Etruria, Stoke-on-Trent
United Kingdom, ST4 7BP
(44) 01782-219816
Fax (44) 01782-286506

SAFETY INFORMATION

Stroke & Coats® are AP Non-Toxic, Food Safe and Dinnerware Safe when used according to manufacturer’s directions.

STROKE & COAT® ACCENTS



Stroke & Coat® Accents (SA-002 Black) is a dimensional glaze that can be used to create raised designs, outlines, stripes, dots, lines and squiggles. It can be applied directly on clay, unpainted bisque, or over other glazes. Clear glaze may be applied if desired. Unlike most other dimensional glazes, which tend to flatten out during firing, Accents fired results will remain clean and crisp.

AVAILABLE SIZES

- 1.25 oz. squeeze bottle

HELPFUL HINTS

Stroke & Coat® Accents formula contains more clay than regular gloss glazes. The clay provides support during application and firing, allowing for raised areas as high as ¼".

- Surface - can be applied to greenware, earthenware bisque or on top of a glaze.
- Gloss Finish - Accents will produce a gloss finish without the need of a clear glaze.
- Certified AP Non-Toxic and Food Safe



PRODUCT FEATURES

Extraordinary Detail

Create lines that are extremely fine to bold and broad. Side-by-side details are preserved; what and where you place Accents on your piece will be how it appears after firing.



Structured Design Work

Designs can be outlined after they are created or Accents can be used to create a design pattern before glaze is applied.



APPLICATION RECOMMENDATIONS

The following application recommendations are based upon the original product development intent and use for the product. Information on alternative application methods is listed in the section "Usage Variations and FAQ's".

- **First Use & Bottle Prep:** Before first using the product you will need to punch a hole in tip of the plastic screw cap using the writer tip provided. DO NOT CUT the plastic tip or make the tip opening larger than the thickness of the writer tip. The metal writer tip is threaded; twist the metal tip onto the plastic nozzle until it fits snugly on the plastic tip.
- **Applying Color:** Shake bottle to force color down into the tip. To initiate product flow, squeeze out a little glaze through the writer tip onto a paper towel. Use steady, even pressure to begin your detailing. Fire to shelf cone 06 (999°C). Accents are Food Safe, Non-Toxic and Non-Hazardous when used under normal conditions.
- Accents may be fired to cone 6 on unglazed porcelain or stoneware bisque. Always test first before using on a major project. Accent will level a bit more when fired at higher temperatures.
- **Post Use & Storage:** If you anticipate using Accents frequently, you may want to store the bottle with the metal tip left on the bottle. Place the metal straight pin (provided) into the metal writer tip; this will help keep the writer tip free from clogging. An alternative storage method is to remove the metal writer tip and reattach the white plastic tip to the screw cap. You'll want to soak the metal writer tip in warm water to remove any traces of Accents from the nozzle.

USAGE VARIATIONS & FAQs

Q: What are some of the ways Accents are used?

A: Suggestions for use are:

- Give contrast to a pattern, outline design work
- Use as a pen to add letters and numbers
- Create textural design on bisque or greenware
- Create structured designs using Accents to outline sections of your design
- Black Accent is great for creating faux Mosaic and Cuerda Seca designs

Q: Why do Accents seem to get thicker in short period of time?

A: Because Accents contain more clay than other glazes, they will be prone to drying more quickly. Even the small amount of air exposure at the nozzle's tip can lead to advanced drying and clogging of the metal/plastic tips of the detailer bottle. If Accents begins to dry in the bottle you can add few drops of water to reconstitute. Stir and test for proper viscosity. Add water sparingly so as not to thin Accents too much.

Q: What are some tips for creating dimensional effects with Accents?

A: You can increase the height of your detail work – to ¼" – by layering Accents. Apply a layer with the detailer bottle and let dry until a skin begins to form. Apply second and third layers the same as you did for the first. Our testing has consistently provided ¼" details; you may achieve greater heights in your work.

For thicker lines and details, remove the metal tip and dispense Accents directly through plastic tip. You may sacrifice precision and clarity of detail using this method.

Q: Can I use a clear glaze over Accents?

A: Clear glazing is not required, as Accents will fire to a gloss finish. If you do clear glaze, allow Accents to dry completely before applying the clear glaze. The clear glaze may cause the dimensional effect to flatten or move during firing.

Q: What are some tips for applying Accents over other glazes?

A: Stiffer glazes (matte, underglazes), which do not move as much as gloss/ heavily fritted glazes, will preserve design work more than faster moving glazes. Vertical surfaces and designs may move more than on a horizontal surface. Allow base glazes to completely dry before applying Accents.

LABEL DIRECTIONS

"Shake well. Apply even pressure to flow onto bisque or glaze. Allow longer drying time if applying clear glaze. Fire to shelf cone 06 (999° C). Do not spray apply without proper personal protective equipment."



FOUNDATIONS® - OPAQUE, SHEER & MATTE

Foundations®

Begin your ceramic project with Foundations® as the surface. Available in gloss opaque, gloss sheer and matte finishes, Foundations® will become an essential building block – easy to apply, consistent firing performance and budget friendly. Its stable, non-moving base is perfect for majolica techniques with Stroke & Coat® glazes. Foundations® glazes are certified AP Non-Toxic, Food Safe, and Dinnerware safe when used according to manufacturer's directions. Foundations® glazes easily serve as the basic "foundation" glaze for any ceramic studio - be that in a school, home or your retail studio.



GENERAL USE

Foundations® glazes were designed to mature at shelf cone 06/05. Apply 2-3 coats, on cone 04 bisque, allowing surface to dry in-between coats. When applying to a large surface, we recommend a broad, soft brush such as CB-604 #4 Soft Fan. Foundations® dries quickly and speeds up your ability to handle or perform additional decorating. Fires to a high gloss finish (excludes mattes), therefore does not need to be clear glazed.

AVAILABLE SIZES

- 4 oz. jar
- 16 oz. wide mouth pint
- Gallons (Available in 15 colors)

HELPFUL HINTS

- Foundations® dry quickly for same day firing
- Intermixable for custom color creation
- Can be applied to greenware or leather-hard clay. We recommend leaving an area unglazed, such as the back or bottom, to allow outgassing during the firing process.
- Many Foundations® can be fired to higher temperatures and still maintain their color. Check the individual color label for performance at cone 6.
- Foundations® will not dissolve or "pick up" previous coats of glaze, making them great for steadfast application.
- Applying clear to matte glazes will no longer give you a matte finish.
- FN-12 Lavender is formulated with chrome-tin pigments and can be sensitive to non-toxic clear glazes; a milky/cloudy haze may form over the colors. Test by adding a light application of the clear glaze to these colors. This color will not fade when used with Mayco's Clear One Dipping (NT-CLR).

Foundations® Opaque – Broad palette of colors that produce a beautiful, smooth high gloss finish and can be intermixed for custom colors. Foundations® glazes dries quickly, allowing immediate additional decorating and same day firing. Foundations® can be applied to leather hard clay, allowing an open area for out-gassing of water and organic materials during the firing process. Many Foundations® Opaque glazes can be fired to higher temperatures. Check individual color label for cone 6 results. Testing is still recommended. Certified AP Non-Toxic and Food Safe.

Foundations® Sheer – These soft translucent glazes add a tint of color to your work, allowing surface textures or design to show through. Certified AP Non-Toxic and Food Safe.

Foundations® Matte – Fires to a beautiful, soft subdued finish. Apply with a fan brush, such as CB-604 #4 Soft Fan, fully loading brush and brushing in one direction to minimize brush marks. 3-4 coats Matte finish will increase in glossiness if fired higher than cone 06. Certified AP Non-Toxic and Food Safe.

PRODUCT FEATURES



Foundations® Opaque and Stroke & Coat®

These glazes are perfect companions, developed to be used together – in layering and combination. Many of the Foundations® Opaque colors were designed to coordinate with Stroke & Coat®, making glaze combinations easy to create.



Foundations® Matte and Stroke & Coat®

Stroke & Coat® glazes applied over Foundations® Matte glazes create contrast and drama in design.



Foundations® Sheer with Designer Liner and Surface Designs

Foundations® Sheer glazes are translucent glazes that can be applied over the entire design. These glazes will not compromise the integrity of brush strokes or the intricate detail of the Designer Liner surface textures or designs.

APPLICATION RECOMMENDATIONS

The following application recommendations are based upon the original product development intent and use for the product. Information on alternative application methods is listed in the section “Usage Variations and FAQ’s”.

- Shake for 5-6 seconds before use.
- Dispense glaze onto a palette (tile, plate, etc.) and apply with your brush or decorating accessory of choice (sponge, stamp, etc.).
- Foundations® glazes were designed to mature at a shelf cone 06 (999° C).
- When applying Foundations® over a large surface area we recommend a broad, soft brush, such as a soft fan brush. Wet brush with water first. Try to get the brush fully saturated (loaded) and apply each coat in the same direction.
- Make sure the glaze has dried thoroughly prior to firing. A medium ramp/firing rate is recommended (250°F per hour).

USAGE VARIATIONS AND FAQS

Q: Can Foundations® be applied to greenware or clay?

A: Mayco has tested the Foundations® Opaque glazes on clay with successful results. Apply 2-3 coats of Foundations® over the entire piece, leaving an area unglazed such as a back or bottom to allow for out gassing. Clay should be completely dry before firing. Fire to shelf cone 04 (1060° C).

Q: Can Foundations® be fired to higher temperatures (cone 6 and above)?

A: Many Foundations® Opaque glazes can be fired to cone 6. Darker colors - green, red, blue, orange, purple - will maintain much of their original color value (they may darken a bit compared to cone 06 results). Lightly pigmented colors - pink, yellow, tan, lighter purples - will fade. Always test to see if this application variance will work on your specific project. Also test for fit with the cone 6 clay bodies you are using. The cone 6 color information is found on the left hand side of the label for each Foundation.

Q: What suggestions do you have for using Foundations® Sheer glazes?

A: Sheers can be used to build layers of color over design work, behaving much like a tinted clear glaze. When used on a detail piece, Sheers will tend to gather and pool around raised and incised areas, deepening the color in those areas. Used as an all-over cover Sheers can provide an elegant and rich surface on dinnerware and home décor pieces.

Q: Can Foundations® Sheers be applied to greenware or clay?

A: Mayco has tested the Foundations® Sheers glazes on clay with successful results. Apply 2-3 coats of Foundations® over the entire piece, leaving an area unglazed such as a back or bottom to allow for outgassing. Clay should be totally dry before firing. Fire to shelf cone 04 (1060° C). Always test on your clay body to make sure this application variance will work for you.

Q: Can Foundations® Mattes be applied to greenware or clay?

A: Mayco has tested the Foundations® Matte glazes on clay with successful results. Apply 2-3 coats of Foundations® over the entire piece, leaving an area unglazed such as a back or bottom to allow for outgassing. Clay should be completely dry before firing. Fire to shelf cone 04 (1060° C). Note: Foundations® Matte will begin to generate a gloss finish at higher temperatures.

Q: Can Foundations® Mattes be fired to higher temperatures (cone 6 and above)?

A: Foundations® Matte glazes will become glossy at higher temperatures (colors may also darken slightly).

LABEL DIRECTIONS

"Shake Well. Apply 3-4 coats to shelf cone 04 bisque (1060° C). Let dry and fire to shelf cone 06 (999° C). Surface finish will be matte. Compatible with Stroke and Coat®. Do not spray apply without personal protective equipment. For complete safety data, SDS, and additional product usage tips please visit us at www.maycocolors.com. Food Safe, Non-Toxic and Non-Hazardous when used according to manufacturer's directions."

<p>Every project starts with a good Foundation...</p> <ul style="list-style-type: none"> • Beautiful, smooth, high-gloss finish • Self leveling formula; no brush strokes in fired finish • Stable and non-moving • Dries quickly for same day firing • Inter-mixable for custom colors • Can be applied to leatherhard clay • Many colors fire at higher temps; check label for performance • Great for glaze combinations • Can be applied with brush, sponge, stamp • Non-toxic, non-hazardous and food safe <p><i>Special Notes:</i></p>	 <h1>Foundations®</h1> <h2>OPAQUE</h2> <p>For Artists of All Ages In the Studio or the Classroom</p> <p>Non-Toxic • Lead Free • Food Safe 16 fl oz (473ml)</p>	<p>Shake well. Apply 2-3 coats to shelf cone 04 bisque. Let dry and fire to shelf cones 06 or 05 (999° C-1046° C). Fires to a gloss finish—clear glaze not required. Do not spray apply without personal protective equipment. For complete safety data, MSDS and additional product information, please visit us at www.maycocolors.com. Food Safe, Non-Toxic and Non-Hazardous when used according to the manufacturer's directions.</p> <p>Made in USA</p> <p>No Toxic Hoch 0 en EE UU Mayco Colors Contacts: U.S.- Hilliard, OH 43026 www.maycocolors.com 01-4878-1171 EU - Brickkiln Lane Etruria, Stoke-on-Trent United Kingdom, ST4 7BP (44) 01782-219816 Fax (44) 01782-286506</p> 
---	--	---

<p>Every project starts with a good Foundation...</p> <ul style="list-style-type: none"> • Beautiful, smooth, high-gloss finish • Self leveling formula; no brush strokes in fired finish • Stable and non-moving • Translucent to semi-translucent, allowing underlying design to show through • Dries quickly for same day firing • Inter-mixable for custom colors • Many colors fire at higher temps; check label for performance • Great for glaze combinations • Can be applied with brush, sponge • Non-toxic, non-hazardous and food safe <p><i>Special Notes:</i></p>	 <h1>Foundations®</h1> <h2>SHEER</h2> <p>For Artists of All Ages In the Studio or the Classroom</p> <p>Non-Toxic • Lead Free • Food Safe 16 fl oz (473ml)</p>	<p>Shake well. Apply 2-3 coats to shelf cone 04 bisque. Let dry and fire to shelf cones 06 or 05 (999° C-1046° C). Fires to a gloss finish—clear glaze not required. Translucent to semi-translucent depending on application. Do not spray apply without personal protective equipment. For complete safety data, MSDS and additional product information, please visit us at www.maycocolors.com. Food Safe, Non-Toxic and Non-Hazardous when used according to manufacturer's directions.</p> <p>Made in USA</p> <p>No Toxic Hoch 0 en EE UU Mayco Colors Contacts: U.S.- Hilliard, OH 43026 www.maycocolors.com 01-4878-1171 EU - Brickkiln Lane Etruria, Stoke-on-Trent United Kingdom, ST4 7BP (44) 01782-219816 Fax (44) 01782-286506</p> 
---	---	---

<p>Every project starts with a good Foundation...</p> <ul style="list-style-type: none"> • Beautiful, smooth, satin finish. • Stable and non-moving. • Dries quickly for same day firing. • Colors will gloss at higher temperatures but maintain color. • Great for glaze combinations, particularly for contrast in finish. • Compatible with Stroke & Coats™. • Can be applied with brush, sponge, stamp. • For large areas, use of a soft fan brush is recommended, applying coats in one direction to minimize brush marks. • Non-toxic, non-hazardous and food safe <p><i>Special Notes:</i></p>	 <h1>Foundations®</h1> <h2>MATTE</h2> <p>For Artists of All Ages In the Studio or the Classroom</p> <p>Non-Toxic • Lead Free • Food Safe 16 fl oz (473ml)</p>	<p>Shake well. Apply 3-4 coats to shelf cone 04 bisque. Let dry and fire to shelf cones 06 (999° C). Fires to a satin finish. Do not spray apply without personal protective equipment. For complete safety data, MSDS and additional product information, please visit us at www.maycocolors.com. Food Safe, Non-Toxic and Non-Hazardous when used according to manufacturer's directions.</p> <p>Made in USA</p> <p>Mayco Colors Contacts: U.S.- Hilliard, OH 43026 www.maycocolors.com 01-4878-1171 EU - Brickkiln Lane Etruria, Stoke-on-Trent United Kingdom, ST4 7BP (44) 01782-219816 Fax (44) 01782-286506</p> 
--	---	---

SAFETY INFORMATION

Foundations® are AP Non-Toxic, Food Safe and Dinnerware Safe when used according to manufacturer's directions.

JUNGLE GEMS™ CRYSTAL GLAZES

Jungle Gems™
Crystal Glaze

These beautiful glazes transform in the kiln when small pieces of glass burst into color and form an intricate pattern during the firing process. Use alone for stunning effects, in glaze combinations, blending with Stroke & Coats®, Foundations® or Cobblestones or simply as an accent to your design. In 2018, the Crystallites were merged into the Jungle Gems™ brand and label. Crystallite colors item numbers and names remain the same.



GENERAL USE

Jungle Gems™ crystal glazes were designed to mature at cone 06/05. Apply to shelf cone 04 bisque. Shake jar well and stir during the application process. Repeat. Shaking after each coat. Apply 3 coats with a fan brush, allow to dry between coats. Avoid placing crystals towards bottom of ware to keep them from flowing onto the kiln shelf during firing. Jungle Gems™ can be fired to higher temperatures. Review individual color label for cone 6 firing results. The crystals in the glaze will melt when fired, which may create a textured surface. As that surface may be difficult to properly clean if in contact with food, we recommend crystal glazes to be used on decorative ware. Jungle Gems™ glazes are certified AP nontoxic, with the exception of CG 707 Woodland Fantasy and CG 713 Peacock Green which require a caution label, CL, due to soluble copper and CG-973 Alligator which requires a caution label, CL, due to Barium.

AVAILABLE SIZES

- 4 oz. jar
- 16 oz. wide mouth pint

HELPFUL HINTS

- Leftover crystals? Just add a complimentary Foundations® glaze or use a complimentary Foundations® as a base glaze in order to make your crystals go further.
- We recommend a soft fan brush, such as CB-604 #4 or CB-618 #8 Soft Fan, for glaze application.
- Stir frequently as crystals tend to settle in the jar due to their weight.
- Store upside down with lid on securely to allow easy mixing and even dispersion of crystals.
- As crystals tend to flow at higher temperatures, we recommend limiting number of crystals on bottom third of vertical piece to avoid glaze running onto kiln shelf.
- Re-distribution of crystals may be required during the final coat. Where you see the crystal is where you will see it bloom.

PRODUCT FEATURES

Great for kids

Jungle Gems™ demonstrate the “magic of the kiln” more effectively than any other glaze. Delightful for kids of all ages.

Crystals with Crystals in layering combination

Layer with another crystal to create a unique effect and finish.





Jungle Gems™ in Combination

Crystals add visual interest in designs and as a backdrop to your artwork. Design with glaze combinations by layering with Stroke & Coat®, Foundations® or Cobblestone.



Wide Firing Range

Jungle Gems™ glazes perform at mid-range (cone 5/6) temperatures for very interesting results. We recommend testing at your preferred firing temperature prior to use. Check label of specific color for performance at higher temperatures.

APPLICATION RECOMMENDATIONS

The following application recommendations are based upon the original product development intent and use for the product. Information on alternative application methods is listed in the section “Usage Variations and FAQ’s”.

- Shake well prior to each application coat. The reason for this recommendation is that the crystals will settle to the bottom of the jar in a short period of time. If you notice the crystals settling during an application you can either dip your brush to the bottom of the jar to re-dispense, use a palette knife to stir or attach the lid and shake vigorously.
- During the application of the third coat of glaze you may find it necessary to re-distribute crystals, or add crystals, on your piece to assure balanced coverage. Use your brush to push crystals onto thinly covered areas or dip your brush into the jar and gather crystals onto it, then “pat” them on the sparsely covered areas.
- We recommend a broad, soft brush, such as a CB-604 #4 or CB-618 #8 Soft Fan Brush, to apply crystal glazes. Moisten brush in water before using. The fan brush may help more in the even disbursement of the crystals, thus creating a more pleasing pattern in the fired glaze.
- Jungle Gems™ were designed to fire to cone 06. Higher temperature firings will change the colors from cone 06 results and movement and flow WILL increase.

USAGE VARIATIONS & FAQS

Q: What advice to do have for firing Jungle Gems™ at higher temperatures?

A: Jungle Gems™, already prone to move, will move that much more at higher temperatures. The crystals will lose some of their definition and act more as a blending agent. You’ll want to be careful about placing glaze too close to the bottom of your piece - in addition to stiling you may want to put a tile or a piece of scrap bisque beneath the piece to prevent glaze from running onto your kiln shelves.

Q: What are some of the ways I can use Jungle Gems™ in my design work?

A: Simply apply the glaze in the pattern and apply as the above directions stated. Several rings of the glaze placed in varied patterns are also attractive. Interesting patterns may be obtained by placing several rings of crystals in a necklace-like placement around the piece. The glaze may need to be strained in order to separate the crystals for this procedure. The crystals are then applied using a brush or small spoon in a linear necklace-like ring around the piece. This can be several rings in sequential order or in a zigzag pattern to produce the most pleasing effect.

Q: Can I mix leftover crystals into other glazes?

A: Yes. Foundations® Sheers would be a good choice as these glazes will allow the crystals to expand much like the base glaze of Jungle Gems™.

LABEL DIRECTIONS

“Shake jar well and stir before each application to keep crystals evenly distributed. Using a fan brush, apply three even coats shelf cone 04 (1060° C) bisque, allowing to dry between coats. Avoid placing crystals on the bottom of the piece. Fire to shelf cone 06 (999° C). Do not spray apply without proper personal protective equipment. Food Safe, Non-Toxic and Non-Hazardous when used according to manufacturer’s directions. May not be suitable for dinnerware due to surface characteristics. For more information, refer to SDS at www.maycocolors.com”

“Special Notes:” Cone 6 results will be listed here.

ART IN A JARI™

- Contains glass crystals and specks which melt during the firing process—“blooming” and spreading to produce dramatic, colorful effects.
- Application: earthenware bisque or soft fired stoneware bisque
- Broad firing range: cones 06-6. Check “Special Notes” for cone 6 performance.
- Due to crystal flow, limit crystals near base of ware; flow increases with higher firing temperature.
- Firing ware vertical or flat will influence crystal movement and change finished look.
- Stir frequently to keep crystals suspended, or pour onto a palette for easy, even application.
- Store upside down with lid securely tightened for easy mixing.
- Use for all over coverage or in design with Stroke & Coat®, Foundations® and other Mayco glazes.
- Non-Toxic and Non-Hazardous. Not recommended for dinnerware due to surface characteristics; decorative use only.

Special Notes:



16 fl oz (473ml)

Shake well and stir before each application to keep crystals suspended. Using a fan brush, apply 2-3 even coats to cone 04 (1060 °C) bisque. Dry between coats. During application of third coat, adjust for even crystal coverage. Avoid placing crystals near the bottom of the ware due to flowing nature of crystals. Allow to dry. Fire to cone 06/05 (999 °C – 1046 °C). May fire to higher temperatures; see “Special Notes” for cone 6 performance. Test first. Do not spray apply. Visit MaycoColors.com for safety data, SDS, and additional product information. Non-Toxic and Non-Hazardous when used according to manufacturer’s directions. Not recommended for dinnerware due to surface characteristics; decorative use only.

Made in USA
 Mayco Colors Contacts:
 U.S. – Hilliard, OH 43026
www.maycocolors.com
 614-876-1171

EU – Brickkiln Lane
 Etruria, Stoke-on-Trent
 United Kingdom, ST4 7BP
 (44) 01782-219816
 Fax (44) 01782-286506



Conforms to ASTM D 4236

ART IN A JARI™

- Contains glass crystals and specks which melt during the firing process—“blooming” and spreading to produce dramatic, colorful effects.
- Application: earthenware bisque or soft fired stoneware bisque
- Broad firing range: cones 06-6. Check “Special Notes” for cone 6 performance.
- Due to crystal flow, limit crystals near base of ware; flow increases with higher firing temperature.
- Firing ware vertical or flat will influence crystal movement and change finished look.
- Stir frequently to keep crystals suspended, or pour onto a palette for easy, even application.
- Store upside down with lid securely tightened for easy mixing.
- Use for all over coverage or in design with Stroke & Coat®, Foundations® and other Mayco glazes.
- Not recommended for dinnerware due to surface characteristics; decorative use only.

Special Notes:



16 fl oz (473ml)

WARNING: MAY BE HARMFUL IF SWALLOWED. Contains COPPER. PRECAUTIONS: Avoid ingestion. Wash hands immediately after use. When using do not eat, drink, or smoke. KEEP OUT OF REACH OF CHILDREN. FIRST AID TREATMENT: If swallowed, get prompt medical attention.

Shake well and stir before each application to keep crystals suspended. Using a fan brush, apply 2-3 even coats to cone 04 (1060 °C) bisque. Dry between coats. During application of third coat, crystals may need to be redistributed for even crystal coverage. Avoid placing crystals near the bottom of the ware due to flowing nature of crystals. Allow to dry. Fire to cone 06/05 (999 °C – 1046 °C). May fire to higher temperatures; see “Special Notes” for cone 6 performance. Test first. Visit MaycoColors.com for complete safety data, SDS, and additional product information. Do not spray apply. Not recommended for dinnerware due to surface characteristics; decorative use only.

Made in USA
 Mayco Colors Contacts:
 U.S. – Hilliard, OH 43026
www.maycocolors.com
 614-876-1171

EU – Brickkiln Lane
 Etruria, Stoke-on-Trent
 United Kingdom, ST4 7BP
 (44) 01782-219816
 Fax (44) 01782-286506



Conforms to ASTM D 4236

SAFETY INFORMATION

Recommended for Ornamental Use Only when applied to low fire earthenware clay bodies:

All but three Jungle Gems™ glazes have been certified as Non-Toxic, safe for use by artists of all ages when used according to manufacturer’s directions. The three glazes with a CL (health caution) label are CG-707 Woodland Fantasy, CG-713 Peacock Green and CG-973 Alligator and should not be used by children under the age of 12.

Jungle Gems™ are not recommended for dinnerware produced from low fire earthenware clay bodies as these glazes can exhibit surface textures such as cracks and crevices. While the glazed surface may pass lead & cadmium leach tests, and therefore legally considered Food Safe, attempts to adequately clean the textured surface may cause the underlying porous ware to absorb water and fail. Jungle Gems™ glazes may be considered dinnerware safe if surface texture is eliminated when firing to mid-range or high fire temperatures.

ELEMENTS™ & ELEMENTS™ CHUNKIES

Elements™

Inspired by aspects of nature, Elements™ and Elements™ Chunkies produce lush, organic, and earthy hues. This high-performance art glaze gives the artist a wide variety of options in one product as application, firing temperature and shape will influence the outcome. Elements™ and Element™ Chunkies were designed to simulate the aesthetic, movement and interest of mid-range and high fire glazes in a cone 06/05 oxidation kiln firing. Elements are a two-tone glaze with a main color and a secondary color called a float. When elements are applied to a detail piece the float will appear in the crevices. Application and firing will also affect the outcome of main color or float.

GENERAL USE

Elements™ and Element™ Chunkies are designed to mature at cone 06/05. Apply 3-4 coats to shelf cone 04 bisque, allow to dry between coats. As movement and flowing are characteristics of these glazes, taper off toward the bottom of the ware to prevent glazes running off the piece onto kiln shelves. Elements™ and Elements™ Chunkies can be fired at higher temperatures but will change in appearance. We recommend testing prior to use. The ever popular FN-215 Aztec Jade, FN-217 Evergreen Fir, FN-218 Green Sapphire, and FN-219 Lustre Green are now part of the Elements product family as their performance characteristics are similar.



AVAILABLE SIZES

- 4 oz. jar
- 16 oz. wide mouth pint

HELPFUL HINTS

- Uneven glaze application can affect the look of the glaze. We recommend application in one direction.
- Allow ample room for air circulation in the kiln during the firing process as heat work and adequate oxygen can influence the glaze appearance.
- Many of the Elements™ produce interesting effects at cone 6 but will change color. We recommend testing to determine color, surface characteristics and movement prior to use.

PRODUCT FEATURES

With Pottery Cascades™

Pottery Cascade™ acts as a flux, creating additional movement, which allows glazes to react and produce stunning results.



In Design

Use Elements™ to create design, layering or use as a background.





As Standalone

Elements™ and Elements™ Chunkies look great as a standalone glaze. Vary the number of coats and ware used to achieve different variations of one glaze.

APPLICATION RECOMMENDATIONS

The following application recommendations are based upon the original product development intent and use for the product. Information on alternative application methods is listed in the section “Usage Variations and FAQ’s”.

- Shake for 5-6 seconds before use. Dispense glaze onto a palette (tile, plate, etc.) and apply with a soft brush or decorating accessory of choice (sponge, stamp, etc.). Dipping your brush directly into the jar could contaminate the jar’s contents, especially if you are using other glazes.
- Apply 3-4 coats to your piece. Elements™ glazes were designed to mature at a shelf cone 06 (999° C or 1830° F).
- When applying them over a large surface area we recommend a broad, soft brush, such as a CB-604 #4 Soft Fan Brush or CB-618 #8. Moisten the brush with water first. Try to get the brush fully saturated (loaded) and apply each coat in the same direction. When the wet look has gone from the first coat, you may apply the next coat of glaze.
- Make sure the glaze has dried thoroughly prior to firing. A medium ramp/firing rate is recommended (250°F per hour) at shelf cone 06.
- An uneven glaze application, the piece’s shape and surface texture can affect the fired finish.
- Amount of detail on the ware can also affect the fired finish

USAGE VARIATIONS & FAQS

Q: Can Elements™ be mixed with other glazes?

A: Using Elements with Pottery Cascades creates beautiful effects. However, intermixing Elements with other glazes is unpredictable; make test samples first to see if the fired result is the desired effect.

Q: What are some basic tips for creating effects with Elements™?

A: Apply to properly fired shelf cone 04 bisque. Use a soft fan or glaze brush, depending on the area and surface to be covered. Generally, three- four coats of glaze are recommended. However, applying four coats will produce a totally different look. For a different effect, brush on three coats and apply a final fourth coat using a silk or sea wool sponge. An uneven glaze application and the ware’s shape and surface (plain or embossed) will also affect the look of the glaze.

Q: Are Elements™ lustre compatible?

A: When Elements are re-fired to lower lustre temperatures (shelf cone 018-020), the original glaze color changes. If this is not a desired effect, you will not want to apply lustres over them. However, you may find the re-fired finishes to be desirable. Our advice is to experiment and make test samples using lustre with the specific Element™ with which you are using.

Q: What recommendations do you have for firing Elements™ to cone 6?

A: Many Elements™ create beautiful effects when used with stoneware in a cone 6 firing environment. Cone 6 color results can be found on the left-hand side of the label giving a description of the fired results at cone 6. Care must be used in application as Elements will be quite fluid and move during the firing process. Keep away from bottom of ware by tapering toward the bottom of the piece or create a natural stop with another glaze. Many of the Elements™ produce interesting effects at cone 6 but will change color. We recommend testing to determine color, surface characteristics and movement prior to use. Testing should also be done to determine if this glaze fits the cone 6 clay bodies you are using.

LABEL DIRECTIONS

“Stir. Apply 3 coats to shelf cone 04 (1060° C) bisque using a soft fan brush. Fire to shelf cone 06 (999° C). NOTE: Firing temperature, length of fire and number of coats will produce color and surface variations. Do not spray apply without proper personal protective equipment. Food Safe, Non-Toxic and Non-Hazardous when used according to manufacturer’s directions. May not be suitable for dinnerware due to surface characteristics. For more information, refer to SDS at www.maycocolors.com.”

“Special Notes:” Cone 6 results will be listed here.

Elements are designed to simulate the aesthetics of mid-range and high fire pottery in a low fire, oxidation environment.

- Free flowing formula allows glaze to move and interact- alone or with other glazes.
- Fired finishes will vary with number of glaze coats, firing temperatures, air circulation and shape of ware.
- Recommend application with soft fan brush with glaze.
- Due to high movement, especially at higher temperatures, recommend tapering glaze application towards bottom of ware.
- Great for glaze combinations.
- Non toxic and Non-hazardous; may not be suitable for dinnerware due to surface characteristics.

Special Notes:



Shake well. Apply 3 coats to shelf cone 04 (1060° C) bisque using a soft fan brush. Fire to shelf cones 06 or 05 (999° C- 1046° C). NOTE: Firing temperature, shape of ware, length of fire and number of coats will produce color and surface variations. Do not spray apply without personal protective equipment. For complete safety data, MSDS and additional product information, please visit us at www.maycocolors.com. Non-Toxic and Non-Hazardous when used according to manufacturer’s directions. May not be suitable for dinnerware due to surface characteristics.



Mayco Colors Contacts:
U.S. - Hilliard, OH 43026
www.maycocolors.com
614-876-1171
EU - Brickkiln Lane
Etruria, Stoke-on-Trent
United Kingdom, ST4 7BP
(44) 01782-219816
Fax (44) 01782-286506

Elements™ are designed to simulate the aesthetics of mid-range and high fire pottery in a low fire, oxidation environment.

- Free flowing formula allows glaze to move and interact- alone or with other glazes.
- Fired finishes will vary with number of glaze coats, firing temperatures, air circulation and shape of ware.
- Recommend application with soft fan brush with glaze.
- Due to high movement, especially at higher temperatures, recommend tapering glaze application towards bottom of ware.
- Great for glaze combinations.

Shake well. Apply 3 coats to shelf cone 04 (1060° C) bisque using a soft fan brush. Fire to shelf cones 06 or 05 (999° C- 1046° C). NOTE: Firing temperature, shape of ware, length of fire and number of coats will produce color and surface variations. Do not spray apply without personal protective equipment. For complete safety data, MSDS and additional product information, please visit us at www.maycocolors.com.

Special Notes:



WARNING: MAY BE HARMFUL IF SWALLOWED. Contains ZINC. PRECAUTIONS: Avoid ingestion. KEEP OUT OF REACH OF CHILDREN. FIRST AID TREATMENT: If swallowed, get prompt medical attention. For further health information contact a poison control center .



Mayco Colors Contacts:
U.S. - Hilliard, OH 43026
www.maycocolors.com
614-876-1171
EU - Brickkiln Lane
Etruria, Stoke-on-Trent
United Kingdom, ST4 7BP
(44) 01782-219816
Fax (44) 01782-286506

SAFETY INFORMATION

Refer to following chart for specific information on certification and dinnerware safe for each glaze. The Elements™ and Elements™ Chunkies glazes are a mix of AP Non-Toxic and CL (Health Caution). See chart below. Some Elements™ glazes are not to be recommended for dinnerware produced from low fire earthenware clay bodies as these glazes can exhibit surface textures such as cracks and crevices. While the glazed surface may pass lead & cadmium leach tests, and therefore legally considered Food Safe, attempts to adequately clean the textured surface may cause the underlying porous ware to absorb water and fail. Elements™ glazes may be considered dinnerware safe if surface texture is eliminated when firing to mid-range or high fire temperatures.

Elements™ ACMI & DINNERWARE SAFETY



AP NON-TOXIC ✓ DINNERWARE SAFE

The following Elements™ glazes have been certified as AP Non-Toxic, safe for use by artists of all ages when used according to manufacturer's directions. These glazes also meet Food Safe regulations as set by the FDA and are considered dinnerware safe when used according to manufacturer's directions as the surface is chemically durable, and they do not exhibit textured surface issues.

EL-101 Oyster Shell
 EL-107 Amber Ash
 EL-110 Mudslide
 EL-118 Blue Grotto
 EL-121 Copper Adventurine
 EL-125 Sahara Sands
 EL-127 Rose Granite

EL-128 Wheat
 EL-129 Slate
 EL-130 Sea Green
 EL-131 Turtle Shell
 EL-132 Rust Red
 EL-133 Autumn
 EL-134 Mirror Blue

EL-142 Grass
 EL-143 Cactus Flower
 EL-144 Dark Amethyst
 EL-145 Ginger Root
 EL-146 Rain Cloud
 EL-149 Lavender Flower
 EL-152 Denim Blue

EL-151 Deep Water
 PC-601 Clear Cascade
 PC-602 White Cascade



AP NON-TOXIC ✗ NOT DINNERWARE SAFE

The following Elements™ glazes have been certified as AP Non-Toxic, safe for use by artists of all ages when used according to manufacturer's directions. However, they are not recommended for dinnerware as the fired finish is not chemically durable and can be impacted by contact with liquid or food. Additionally, if your ware exhibits textured surface issues such as cracks or crazing, attempts to adequately clean the surface may cause the underlying low-fire porous ware to absorb water and fail. Recommended for ornamental use only.

EL-204 Glowing Embers

EL-209 Night Sky

EL-211 Volcanic Glow



CL HEALTH CAUTION ✓ DINNERWARE SAFE

The following Element™ glazes bear a CL (Health Caution) label and should not be used by children under the age of 12. However, they do meet Food Safe regulations as set by the FDA and are considered dinnerware safe when used according to manufacturer's directions as the surface is chemically durable, and they do not exhibit textured surface issues.

EL-103 Sea Spray
 EL-106 Tidal Pool
 EL-117 Waterfall

EL-122 Malachite
 EL-123 Patina
 EL-124 Stormy Blue

EL-135 Rare Earth
 EL-136 Lapis Lagoon
 EL-140 Toasted Almond

EL-153 Caribbean Blue
 EL-160 Foliage Green



CL HEALTH CAUTION ✗ NOT DINNERWARE SAFE

The following Elements™ glazes bear a CL (Health Caution) label and should not be used by children under 12. Though they meet the FDA standards for Food Safe, they are not recommended for dinnerware as as the fired finish is not chemically durable and can be impacted by contact with liquid or food. Additionally, if your ware exhibits textured surface issues such as cracks or crazing, attempts to adequately clean the surface may cause the underlying low-fire porous ware to absorb water and fail. Recommended for ornamental use only.

EL-113 Spanish Moss
 EL-119 Burnished Steel
 EL-120 Black Ice
 EL-137 Black Adventurine
 EL-154 Sea Mist Green

EL-155 Holiday Green
 EL-156 Bluegrass
 EL-157 Leaf Green
 EL-158 Pine Needles
 EL-159 Emerald Green

EL-161 Bottle Green
 EL-205 Jade Pebble
 EL-207 Gold Mine
 EL-208 Moss Creek
 EL-212 Spotted Walnut

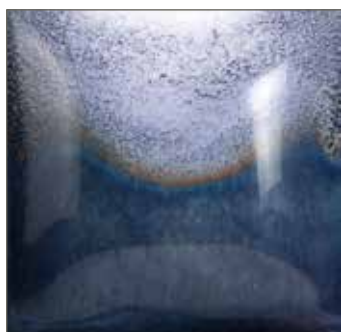
FN-218 Green Sapphire
 FN-219 Lustre Green

*The above chart is recommended usage for low fire (earthenware cone 05/06) dinnerware. Elements™ with surface texture applied to vitrified clay bodies at mid-range or high-fire temperatures do not have the same concern and may be considered dinnerware safe. Finishedware producers may be required to have their ware food safe tested prior to introducing into commerce.

POTTERY CASCADE™



PC-601 Clear Cascade
*Over EL-118 Blue Grotto



PC-602 White Cascade
*Over EL-118 Blue Grotto

Pottery Cascade™ are moving, flowing glazes, commonly used under or over other glazes to create reactions and movement. They can be applied randomly or uniformly, brushed or dabbed on with a sponge. White Cascade adds a tinge of color to glazes with which they are used. Use Pottery Cascade™ as a flux with Elements™ to create movement in the colors. Great visual effects are created when added under, over or in-between Elements™ or Elements™ Chunkies. Cascades are perfect for the low fire designer seeking to create the looks achieved at higher temperatures. Their variability insures that no two designs will be exactly alike.

GENERAL USE

Apply 1-2 coats with a brush or sponge, under or over another glaze. You can influence the direction of the flow or create a pattern by how you apply the glazes. Allow to dry thoroughly. Fire to cones 06/05. To prevent the glaze from running off your vertical pieces do not apply Pottery Cascades to the bottom third of the piece.

AVAILABLE SIZE

- 4 oz. jar
- 16 oz. wide mouth pint

HELPFUL HINTS

- Avoid applying Pottery Cascade™ on lower third of piece, as glaze will move.
- PC-601 Clear Cascade is the most fluid of the Cascade products, requiring care in application.
- PC-602 White Cascade moves less than Clear Cascade.
- Pottery Cascade™ are luster compatible.

PRODUCT FEATURES

Movement and Flow

Pottery Cascade™ are commonly used by low-fire designers who seek to simulate effects of higher fire glazes. With the disappearance of leaded glazes from the markets, Cascades have been used to create the flowing movement lead used to provide.

APPLICATION RECOMMENDATIONS

- The following application recommendations are based upon the original product development intent and use for the product. Information on alternative application methods is listed in the section "Usage Variations and FAQ's".
- Shake for 5-6 seconds before use.
- Dispense glaze onto a palette (tile, plate, etc.) and apply with your brush or decorating accessory of choice (sponge, stamp, etc.).
- We advise against dipping your brush directly into the jar to avoid contamination, particularly if you are using one brush to layer Pottery Cascades over other glazes.
- We recommend that you do not apply Pottery Cascade™ to the lowest third of your piece, as these glazes WILL move. Vertical pieces require more attention to this detail than horizontal pieces.
- Pottery Cascade™ glazes were designed to mature at a shelf cone 06 (999° C). Make sure the glaze has dried thoroughly prior to firing. A medium ramp/firing rate is recommended (250°F per hour).



PRODUCT USAGE & FAQs

Q: What tips do you have for applying Pottery Cascade™?

A: Apply PC-602 White Cascade with a brush in 1-3 coats. Can be dabbed on at random, evenly or unevenly to create different flow patterns using a sea wool sponge, for example. PC-601 Clear Cascade should be brushed on as you would apply a glaze. Apply 1-2 brushed coats over or under a non-toxic glaze. Do not go below the halfway point of the piece, as the PC-601 Clear Cascade flows the most. Pottery Cascade™ can be applied between color, underneath and over colors for different effects.

Other conditions that could affect the performance of Pottery Cascade™ include:

- The order in which the Pottery Cascade™ is applied to your piece.
- Shape and surface textures on your piece.
- The nature of the glazes Pottery Cascade™ is used with. More fluid glazes, such as Elements™, Elements™ Chunkies and Jungle Gems™ glazes will perform differently than non-moving glaze, such as Foundations® Opaque or Stroke and Coat®.
- Firing temperature, ramp rate and a soaking period may enhance the flow patterns.

Q: How do the “personalities” of each Pottery Cascade™ differ?

A: PC-601 Clear Cascade produces a more flowing effect and allows the color of the base glaze to show through. It can also alter your original color, creating a new color. It will form runs or you can direct the runs when you apply the product. PC-602 White Cascade intermingles with the other glazes being used, introducing pure white to the colors you are using, blending with the color. PC-602 White Cascade has a minimum movement and will stay in the pattern that you apply it in. The degree of movement depends on if a moving glaze such as Elements™ or Elements™ Chunkies are used, the amount of Pottery Cascade™ is applied and the firing temperature.

Q: Can Pottery Cascade™ be used by itself?

A: Yes, Pottery Cascade™ can be used alone.

Q: Is Pottery Cascade™ over-glaze (luster) compatible?

A: Yes, but always test first before undertaking a major project.

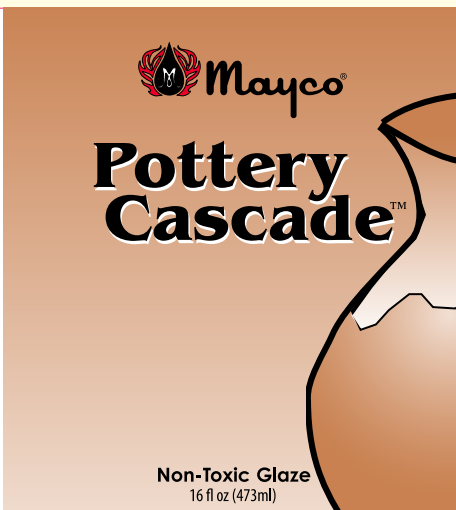
LABEL DIRECTIONS

"Shake well. For a flowing effect, brush on 1-2 coats over or under other non-toxic glazes on shelf cone 04 bisque (1060° C). Do not apply on bottom half of piece. Let dry. Fire to shelf cone 06 (999° C). Do not spray apply without proper personal protective equipment. Food Safe, Non-Toxic and Non-Hazardous when used according to manufacturer's directions. May not be suitable for dinnerware surfaces due to surface characteristics. For more information, refer to SDS at www.maycocolors.com."

Pottery Cascade™ is a moving, flowing glaze that is commonly used under or over other glazes to create reactions and movement. Can be applied randomly or uniformly, brushed or dabbed on with a sponge. This glaze is perfect for the low fire designer that seeks fired results similar to those achieved at higher temperatures. Their reactivity insures that no two fired results will be exactly alike.

Suggestions and Tips:

- Use Pottery Cascade™ as a flux with Elements™ or Element™ Chunkies to evoke movement and color variation.
- Application methods and orientation can influence the direction, flow and patterns that develop during firing.
- To prevent against glaze running off your work, avoid applying Pottery Cascade™ on the bottom part of your ware.
- The amount of movement is impacted by the underlying glaze. Moving glazes, such as Elements™ and Elements™ Chunkies, will perform differently than non-moving glazes such as Foundations® or Stroke and Coat®.
- Firing temperature, ramp rate and a soaking period may enhance the flow patterns.



Shake well. For a flowing effect, brush on 1-2 coats over or under other non-toxic glazes on shelf cone 04 bisque (1060° C). Do not apply on bottom half of piece. Let dry. Fire to shelf cone 06 (999° C). Do not spray apply without proper personal protective equipment. Food Safe, Non-Toxic and Non-Hazardous when used according to manufacturer's directions. May not be suitable for food surfaces due to surface characteristics. For more product usage and safety information, visit us at www.maycocolors.com.



Made in USA

Mayco Colors Contacts:
U.S. - Hilliard, OH 43026
www.maycocolors.com
614-876-1171
EU - Brickkiln Lane
Etruria, Stoke-on-Trent
United Kingdom, ST4 7BP
(44) 01782-219816
Fax (44) 01782-286506

SAFETY INFORMATION

Pottery Cascades® are AP Non-Toxic, Food Safe and Dinnerware Safe when used according to manufacturer's directions.

CLASSIC CRACKLES™



Classic Crackles™ add a level of sophistication and dimension to your designs. The “cracked” effect has traditionally been used to create a vintage or antique appeal. Increase complexity by using in combination with other glazes or design work.

GENERAL USE

Classic Crackles™ are AP Non-Toxic, low fire (cone 06) glazes that are designed to “craze”; that is, develop subtle surface cracks in the finished glaze. This cracked effect has traditionally been used on home décor pieces by designers looking to create a vintage or antiqued appeal to their pottery. To highlight the cracks, after firing wipe black acrylic or color over the ware and wipe off, allowing the ink to fill the cracks.

AVAILABLE SIZES

- 4 oz. jar
- 16 oz. wide mouth pint

PRODUCT FEATURES



With Designer Liner

The transparency of the Classic Crackles™ allows underlying designs to show through.



In glaze combination

Compatible for use with Stroke & Coat®, Foundations®, Fundamentals Underglazes and more. Classic Crackles™ are traditionally used to create a vintage or antique appeal.

APPLICATION RECOMMENDATIONS

The following application recommendations are based upon the original product development intent and use for the product. Information on alternative application methods is listed in the section “Usage Variations and FAQ’s”.

- Shake well.
- We recommend a broad, soft brush, such as a CB-604 #4 Soft Fan Brush, to apply the glaze.
- Apply three coats to properly fired shelf cone 04 bisque.
- Fire to shelf cone 06.
- To highlight the cracks, after firing wipe black acrylic or color over the ware and wipe off, allowing the ink to fill the cracks.

USAGE VARIATIONS & FAQs

Q: Do you have any tips or recommendations for improving the cracking pattern?

A: The “crackle pattern” in the glaze is actually a firing defect called “crazing.” Simply put, crazing occurs when the glaze shrinks more than the body. The tension of the glaze on the body causes the glaze to crack.

In the case of Classic Crackles™ it is our intent to develop a glaze that will not fit an earthenware body. While we design and test for a common cone 06 earthenware body we know clay body composition can vary. If you having difficulty obtaining a crackle pattern one potential issue may be that the glaze “fits” the body too well.

Some things you can try to instigate cracking:

- As the kiln cools enough to open, remove the ware and expose it to cooler air. The thermal shock may induce cracking.
- Use a spritz bottle to lightly spray water onto a ware piece as this may also induce cracking.
- Try a different clay body or source of bisque.
- Always test to find the best body/glaze combination that gives you ideal results before engaging in mass production.

Q: Can you create designs beneath or on top of Classic Crackles™?

A: Yes, you can do both. Classic Crackles™ are transparent and easily allow designs on the bisque surface to appear through. Glazes such as Stroke & Coat® and Foundations® work very well for design work under Classic Crackles™. Use only 1-2 coats of the glaze under to create the design; too much color may prevent the crackle from developing properly. Apply three coats of the crackle glaze and fire to shelf cone 06. Design work on top of Classic Crackles™ will remain intact after firing as the crackle glaze does not move. If Stroke & Coat® is applied on top of crackles you can get “fuming” discoloration around the Stroke & Coat®

Q: Are Classic Crackles™ overglaze compatible?

A: Overglazes, such as Gold and Mother of Pearl, can be used on Classic Crackles™ as can low fire decals.

Q: How can I accentuate and “highlight” the crackle pattern after firing?

A: You can use non-fired products or fired products to highlight the crackle pattern.

If you plan to highlight the crackle: handle the glazed ware with gloves or a clean rag to avoid getting dirt in the cracks. Oils from your hand can also prevent the antiquing color from filling in the cracks. While black inks and glaze are commonly chosen, you can choose any color to accent the cracks.

Fired products: you can use any glaze to fill in the cracks. Wipe glaze into the cracks with a clean rag and re-fire to cone 06.

Non-fired products: use acrylics, mineral spirit stains or India ink to stain the cracks. Wipe onto the piece with a clean rag until the cracks are adequately filled in.

Q: Sometimes my bisque will split when using Classic Crackles™. What causes this to happen?

A: Crackle glazes place stress on the ware during firing. To prevent containers, such as vases, from splitting or cracking apart make sure a compatible (not stiff) non-toxic glaze is used to coat the inside of the vase. Compatible Mayco glazes include Foundations®, NT-Clear, S-2101. Allow ample room between pieces in the kiln for air circulation.

LABEL DIRECTIONS

"Shake jar well. Apply 3 coats to shelf cone 04 bisque (1060° C). Fire to shelf cone 06 (999° C). Antique with non-fired color if desired. Do not spray apply without proper personal protective equipment. Food Safe, Non-Toxic and Non-Hazardous when used according to manufacturer's directions. May not be suitable for food surfaces due to surface characteristics. For more information, refer to SDS at www.maycocolors.com"

<p>Classic Crackles™ are non-toxic, transparent, low fire glazes that are designed to create cracks in glaze surface during the firing process.</p> <ul style="list-style-type: none"> • Highlight crackle pattern by applying ink or acrylic and wipe off after firing. • Create designs on bisque surface as transparent quality of the crackle glaze allows design work to show through. Stroke & Coats®, Foundations®, or Designer Liner are recommended to for design work. • Design work with Stroke & Coats® or Foundations® may also be over Classic Crackles™. Will not move during the firing process. • Non-toxic and Non-Hazardous. Due to textured surface and difficulty to clean, recommended for decorative use only. 	 <p>Mayco®</p> <p>Classic Crackles™</p> <p>Non-Toxic • Lead Free</p> <p>16 fl oz (473ml)</p>	<p>Shake well. Apply 3 coats to shelf cone 04 bisque. Let dry and fire to shelf cones 06 or 05 (999~1046° C). Antique with ink or non-fired colors if desired to highlight crackle pattern. Do not spray apply without personal protective equipment. For complete safety data, MSDS and additional product information, please visit us at www.maycocolors.com. Food Safe, Non-Toxic and Non-Hazardous when used according to manufacturer's directions. Classic Crackles™ are Food Safe according to FDA standards but may not be suitable for dinnerware due to the fired surface characteristics which can make the surface difficult to properly clean.</p>	 <p>ACMI AP AMERICAN CERAMIC MATERIALS INSTITUTE</p> <p>Conforms to ASTM D 4236</p> <p>Made in USA</p>
<p>Special Notes:</p>		<p>Mayco Colors Contacts: U.S. Hilliard, OH 43026 www.maycocolors.com 614-876-1171 EU: Brickkiln Lane Etruria, Stoke-on-Trent United Kingdom, ST4 7BP (44) 01782-219816 Fax (44) 01782-286506</p>	

SAFETY INFORMATION

Classic Crackles™ glazes have been certified as AP Non-Toxic, safe for use by artists of all ages when used according to manufacturer's directions. However, they are not recommended for dinnerware as these glazes can exhibit surface textures such as cracks and crevices. While the glazed surface may pass lead & cadmium leach tests, and therefore legally considered Food Safe, attempts to adequately clean the textured surface may cause the underlying porous ware to absorb water and fail. Recommended for ornamental use only.

DESIGNER LINER



Designer Liner is clay based and heavily pigmented. Use this versatile product to create fine detail with lines, dots, and letters. The metal writer tip allows for ultimate control to draw ultra-fine or bold lines, typography and intricate illustration, or apply with a brush to create watercolor or ink wash effects. Designer Liner is best when used under non-moving transparent or semi-transparent glazes. Fires cone 06 - cone 6. Certified AP Non-Toxic and Food Safe. Available in a 11 essential colors.

AVAILABLE SIZES

- 1.25 oz. squeeze bottle (includes metal writing tip)

HELPFUL HINTS

- Remove the white cap then gently puncture plastic tip with the metal writer tip.
- After placing the metal tip onto the bottle cap, push the included pin through the small ziptop bag and seal (this makes it easier to keep track of the pin). Turn the bag into a flag!
- Keep the pin in the metal writer tip when not in use.
- Designer Liner is clay based. As such, it is the nature to dry quickly, which can promote clogging in the narrow passages of the metal and or plastic tips.
- Clear or transparent glazing is necessary for gloss finish. Designer Liner will fire matte when no glaze is applied over top.
- Design work could be distorted when applied on top of moving glazes. Such as, Elements™, Crystal or Stoneware glazes.
- Wipe tip periodically on a damp sponge to keep clean.
- Keep the metal pin to unclog the tip and keep the metal writer tip free from debris.
- If Designer Liner begins to dry in the bottle you can add a few drops of water to reconstitute Designer Liner. Stir and test for proper viscosity. Add water in small amounts to avoid over-thinning the Designer Liner.
- Place some Designer Liner on a tile and use a CB-110 #10/0 Liner Brush for extra fine outlining or detailing.
- Designer Liner is not a dimensional product. If applied too thick or heavy, Designer Liner will crack and possibly pop off.
- The 1.25 oz. squeeze bottle fits nicely in the hand, permitting complete control and refinement for outlining, drawing, and detailing. Works great with Fundamental Underglazes!



PRODUCT FEATURES

Works Great at Low-Fire and Mid-Range

Designer Liner enables the artist to achieve crisp, non-moving line work at cone 06-6 temperatures. To ensure sharpness in line quality, use a non-moving translucent or clear glaze over the top of Designer Liner. Fires to a matte finish without a glaze over the top.

Great for writing text

Use the metal writer tip and find your style. Create using cursive, free-hand drawing, block-lettering, or calligraphy.



Perfect for fine detail illustration

Try all types of line to create depth and visual interest in your designs. Designer Liner is the tool to draw in all styles; pointillism, cross-hatching, scumbling, and can also be applied with script liner brush to create calligraphy-like line-work.



Brush Work

Brush apply to simulate a watercolor or ink wash effect.

APPLICATION RECOMMENDATIONS


- **Bottle Prep:** Before first using the product, you will need to punch a hole in the tip of the plastic screw cap using the writer tip provided. DO NOT CUT the plastic tip or make the tip opening larger than the thickness of the metal writer tip. The metal writer tip is threaded and will snugly fit on the tip of the screw cap.
- **Applying Color:** Shake bottle to force color down into the tip. To initiate product flow, squeeze out a little of the product through the writer tip onto a paper towel. Use steady, even pressure to begin your detailing. Apply onto clay/greenware, bisque or unfired glaze and then apply a clear glaze. Do not use clear glaze on greenware. Apply with a liner brush for fine outlining or brushstrokes. Fire to shelf cone 05/06 (1031°C/999°C) or up to cone 6 (1222°C). Designer Liner is food safe with clear glaze applied overtop, AP Non-Toxic and Non-Hazardous when used under normal conditions.
- **Storage:** Store the bottle with the metal tip left on the bottle. Place the metal straight pin (provided) into the metal writer tip as this will help keep the writer tip free from clogging. An alternative storage method is to remove the metal writer tip and reattach the white plastic tip to the screw cap. You will want to soak the metal writer tip in warm water to remove any traces of the designer liner from the nozzle. In either case it is important to minimize air exposure to Designer Liner. Always store at room temperature.

LABEL DIRECTIONS

Shake well. Apply even pressure to flow onto bisque or glaze. Allow a longer drying time before applying a transparent or clear glaze. Can also be applied with a liner brush. Firing range is shelf cone 05/06 (1031° C /999° C) to cone 6 (1222° C). Do not spray apply without proper personal equipment.



Shake well. Apply even pressure to flow onto bisque or glaze. Allow a longer drying time before applying a transparent or clear glaze. Can also be applied with a liner brush. Firing range is shelf cone 05/06 (1031°C/999°C) to cone 6 (1222°C). Do not spray apply without proper personal equipment.


 Conforms to ASTM D 4236
 U.S.: Hilliard, OH 43026
 www.maycocolors.com
 (614) 876-1171
 EU: Bricklin Lane
 Etruria, Stoke-on-Trent
 United Kingdom, ST4 7BP
 (44) 01782-219816
 Fax (44) 01782-286506

SAFETY INFORMATION

AP Non-Toxic, Food Safe and Dinnerware Safe when clear glaze is applied as Designer Liners are porous when left unglazed.

COBBLESTONES



Cobblestones create a textured “cobbled” surface when fired. Apply over another glaze and during the firing process, a shattered pattern of raised, irregular chips will emerge. The underlying glaze will appear in the cracks. To create colored Cobblestones, brush Stroke & Coat® glaze of choice over the white Cobblestone and fire.

AVAILABLE SIZES

- 4 oz. jar
- 16 oz. wide mouth pint

PRODUCT FEATURES

Add color with Stroke & Coat®

Apply 1 coat of Stroke & Coat® over Cobblestone glaze for colorful textural effects.



Cone 6 Firing

Cobblestones may also be fired to cone 6 to add a unique look to mid-range fire designs.



Texture

Great for replicating skin patterns and textures of reptiles, spotted animals, and mushrooms.



APPLICATION RECOMMENDATIONS

The following application recommendations are based upon the original product development intent and use for the product. Information on alternative application methods is listed in the section “Usage Variations and FAQ’s”.

Certified AP Non-Toxic and Food safe; however not recommended for food surfaces due to surface characteristics.

- To achieve the cracked pattern (pictured left: Apply Cobblestones over any non-toxic glaze. While Cobblestones can be applied over a previously fired glaze the cracked pattern will become more pronounced if applied on an unfired glaze.
- Shake for 5-6 seconds before use.
- Dispense glaze onto a palette (tile, plate, etc.) and apply 2 coats, in the same direction, with a broad, soft brush, such as a CB-604 #4 Soft Fan Brush.
- Apply the second coat while the first coat is still damp: do not allow Cobblestone to dry between coats.
- Pattern break-up is determined by the application direction of the brush stroke. Large break up heavier application, small breakup lighter application.
- If application is too light the cobblestone will not break up. Reapplying and touching up will not achieve a break up.
- If applied too heavy, flip back may occur.
- Fire to shelf cone 06 or higher.



SG-201 Black Cobblestone
over white base glaze



SG-202 White Cobblestone
over black base glaze

USAGE VARIATIONS & FAQs

Q: What conditions can influence the performance of Cobblestones?

A: Application thickness, drying time before firing, firing atmosphere and temperature can all affect the fired results you obtain. If cobblestone is applied too heavy you will get a “flip up” down to the bisque. To fix, re-apply the base glaze and cobblestone. Pattern will vary from original break up.

Q: Any tips for handling ware with unfired, dried Cobblestones on it?

A: Handle the ware carefully as the dried Cobblestone has a tendency to flake off. Pieces of cobblestone that fall off may be reapplied to the ware using AC-302 Wax Resist. If cobblestone flakes off and you reapply cobblestone in that area this area will have a different break up pattern. A protective coating of AC-302 Wax Resist can be applied over the cobblestone while the cobblestone is still damp to help alleviate the flaking of the product.

Q: How can I tint Cobblestones?

A: SG-202 White Cobblestone can be made into various colors by applying 1 coat of Stroke and Coat on top of the damp cobblestone. Darker pigment colors work best. Heavy application of Stroke & Coat® can interfere with the break up). Always do a test firing.

Q: Are there any application situations I should avoid?

A: SG-201 Black Cobblestone will not break up over Matte glazes. If Black Cobblestone is desired on Mattes use SG-202 White Cobblestone and apply 1 coat of SC-15 to achieve this effect. Do not apply directly on bisque; a glaze is needed underneath Cobblestones.

LABEL DIRECTIONS

“A unique textural glaze which forms a raised rectangular chip-like surface. Amount of product application will influence final design. Stir Well. Brush of sponge over any glaze. Handle carefully as dried glaze has tendency to flake. Fire to shelf cone 06 (999° C). NOTE: Firing temperature, length of fire and number of coats will produce color and surface variations. Do not spray apply without proper personal protective equipment. CONE 6 RESULTS: Turns Glossy”

<p>A unique textural glaze which forms a raised rectangular chip-like surface. Amount of product application will influence final design. Stir Well. Brush of sponge over any glaze. Handle carefully as dried glaze has tendency to flake. Fire to shelf cone 06 (999° C). NOTE: Firing temperature, length of fire and number of coats will produce color and surface variations. Do not spray apply without proper personal protective equipment. CONE 6 RESULTS: Turns Glossy</p>	 <p>Mayco[®]</p> <p>Cobblestone</p>	<p>Contents/Contenido</p> <p> </p> <p>No Tóxico Made in U.S.A. Hecho en EE.UU.</p> <p>Mayco Colors Contacts: U.S. Hilliard, OH 43026 (614) 876-1171 www.maycocolors.com</p> <p>EU - Bricklin Lane Etruria, Stoke-on-Trent United Kingdom, ST4 7BP (44) 01782-219816 Fax (44) 01782-285606</p>
---	--	---

SAFETY INFORMATION

Cobblestone glazes have been certified as Non-Toxic, safe for use by artists of all ages when used according to manufacturer's directions. However, they are not recommended for dinnerware due to the durability of the fired glaze. Some glazes, regardless of surface texture or porosity of underlying clay body, will be designated as not suitable for dinnerware as the fired glaze surface is not durable and can be impacted by contact with food or liquids. While it may not be harmful, it is certainly not desirable. Further, these glazes exhibit surface textures such as cracks and crevices. While the glazed surface may pass lead & cadmium leach tests, and therefore legally considered Food Safe, attempts to adequately clean the textured surface may cause the underlying porous ware to absorb water and fail. Recommended for ornamental use only.

SNOWFALL



SG-302 Snowfall is a dimensional glaze that creates a white, textured surface. It is a non-moving glaze and, as such, application methods (brushing, detailer bottle/slip trailer) have an impact on the fired result. Certified AP Non-toxic & Food safe; however not recommended for food surfaces due to surface characteristics.

AVAILABLE SIZES

- 4 oz. jar
- 16 oz. wide mouth pint



APPLICATION RECOMMENDATIONS

The following application recommendations are based upon the original product development intent and use for the product. Information on alternative application methods is listed in the section “Usage Variations and FAQ’s”.

- Mix well. Apply 2 or more coats over unfired glazes, shelf cone 04 bisque (1060°C), greenware or clay.
- Can be applied with a soft brush or sponge.
- For dimensional effects, apply using a Writer Tip.
- Fire to shelf cone 06 (999°C).

USAGE VARIATIONS & FAQS

Q: What recommendations do you have for using Snowfall with copper-based green glazes?

A: SG-302 Snowfall will boil when applied on top of FN-217 Evergreen Fire, FN-219 Lustre Green and FN-218 Green Sapphire due to the copper pigment. The fired Snowfall may also become tinted (“bluing”) as the copper leaches into the glaze.

For successful results using Snowfall with one of these glazes do the following:

- Apply 2-3 coats of any of the copper green glazes leaving the area for the SG-302 Snowfall without the green glaze and butt the SG-202 Snowfall up to the glaze.
- Apply 2-3 coats of any of the copper green glazes leaving the area for the SC-302 Snowfall without the green glaze. In the unglazed area apply 1 coat of S-2101 Crystal Clear Brushing Glaze to the unglazed area, then apply SB-302 Snowfall over the S-2101 Crystal Clear Brushing Glaze.

Q: Can Snowfall be tinted?

A: Color SG-302 Snowfall by applying 1 coat of your favorite Stroke & Coat® over the Snowfall. Clear Brushing or Clear Dipping Glazes can also be applied over Snowfall.

LABEL DIRECTIONS

Mix well. Apply 2 or more coats to greenware, shelf cone 04 (1060° C) bisque or over unfired glazes. Can be applied with a brush or a sponge. Fire to shelf cone 06 (999° C). May not be suitable for food surfaces due to surface characteristics. For more information, refer to website for more information. CONE 6 RESULTS: "No Change"



SAFETY INFORMATION

Snowfall has been certified as Non-Toxic, safe for use by artists of all ages when used according to manufacturer's directions. However, Snowfall is not recommended for dinnerware as it exhibits surface textures such as cracks and crevices. While the glazed surface may pass lead & cadmium leach tests, and therefore legally considered Food Safe, attempts to adequately clean the textured surface may cause the underlying porous ware to absorb water and fail. Recommended for ornamental use only.

SCULPTING MEDIUM



SG-501 Sculpting Medium over black base glaze

SG-501 Sculpting Medium is a dimensional “glaze” that produces a white, raised surface. Think of it as a thin spackle material that can be applied with a palette knife, sponge or brush. After mixing, Sculpting Medium will have the fluidity of condensed milk, but it will set up within 2-3 minutes. Use to create a controlled surface texture, use a stencil, or use a sponge to create more organic textures.

GENERAL USE

Sculpting Medium can be applied directly on bisque or on top of an unfired glaze. The recommended application thickness is up to 1/8”. The fired finish can be coarse and have rough edges; a layer of clear glaze (or a colored glaze) will smooth these sharp edges. Firing range is 05/06: it will begin to flatten out at higher temperatures.

AVAILABLE SIZES

- 4 oz. jar
- 16 oz. wide mouth pint



HELPFUL HINTS

- Use stencils, lace and stamps to add structured design elements to you work. Apply a stencil to your piece, brush Sculpting Medium over the stencil; let the Medium set up a bit (until the wet look is gone) and remove the stencil when the “wet look” is gone.
- Sculpting Medium is sensitive to thicker applications. Creating a layer 1/8” may result in splits or cracks appearing in the fired surface. This may be an effect you intentionally wish to achieve; if not, keep the thickness below 1/8”.
- Quick drying means design integrity is maximized.
- Base glaze properties can impact your final surface. Applied over a moving glaze will cause the Sculpting Medium design to move and separate.
- After removing tools such as stencils or lace sharp, jagged edges may form. A moistened fan brush can be used to smooth these rough edges. You can also apply a glaze over the design to help smooth sharp effects.
- Sculpting Medium will shrink slightly over glaze. Needs to be fired at cone 05/06, otherwise the sculpting medium will gloss and soften the edges.
- Can be applied in a painterly fashion using brushstrokes or squeezed through a writer tip.
- Non-Toxic, Food Safe. Recommended for ornamental use only.

PRODUCT FEATURES

Layer Glazes Over Sculpting Medium

Apply 2-3 coats of Stroke & Coat® (shown here) for a raised, colorful design.



Precise, Crisp Designs

Fine detailed textures can be created using stencils, paper cut-out patterns and other tools.



LABEL DIRECTIONS

"Mix well. Apply with a brush, palette knife or squeegee to bisque. Use for dimensional effects. Fire to shelf cone 05/06 (1031°C - 999°C). Not suitable for dinnerware due to surface characteristics. Apply Stroke & Coat over Sculpting Medium to add color. For more tips and information, refer to SDS at www.maycocolors.com."



SAFETY INFORMATION

Sculpting Medium has been certified as Non-Toxic, safe for use by artists of all ages when used according to manufacturer's directions. However, Snowfall is not recommended for dinnerware as it exhibits surface textures such as cracks and crevices. While the glazed surface may pass lead & cadmium leach tests, and therefore legally considered Food Safe, attempts to adequately clean the textured surface may cause the underlying porous ware to absorb water and fail. Recommended for ornamental use only.

FUNDAMENTALS™ UNDERGLAZES

FUNDAMENTALS™



Underglazes were the first product line our company produced in 1954 and continue to be a staple for many ceramic artists. The product line was rebranded in 2017 by adding “Fundamentals”. Mayco Fundamentals™ Underglazes are highly versatile – use for complete coverage or in design, apply to clay or bisque, fires from cone 06 to cone 10. Serves equally well the student making their first pinch pot and the clay artist creating works for a gallery.

GENERAL USE

Apply to green-ware or shelf cone 04 bisque. For best results, apply color in a flowing motion, keeping brush adequately loaded with glaze. Allow first coat to dry. Apply second coat at a right angle to first coat. Apply the third coat at right angle to second coat. If applied to green-ware, fire to shelf cone 04. If desired, apply clear glaze and re-fire to shelf cone 06/05. If applied to bisque, clear glaze can be applied directly to the unfired Fundamentals™ Underglazes and then fired to shelf cone 05.

AVAILABLE SIZES

- 2 oz. jar
- 16 oz. wide mouth pint
- Gallons (Jet Black & China White)

PRODUCT FEATURES

Intermixable

Mayco’s Fundamentals™ Underglazes can be ‘palette mixed’ just like paints.



Sgraffito

A technique that employs carving designs into the clay/greenware. Application of Fundamentals™ Underglazes creates a dimensional effect.



Matte Finish

Create depth and contrast with the matte finish of Fundamentals™ Underglazes combined with a gloss glaze such as Stroke & Coat®.



Cone 6

A wide variety of Mayco’s Fundamentals™ Underglazes are perfect for use at mid-range temperatures.



APPLICATION RECOMMENDATIONS

The following application recommendations are based upon the original product development intent and use for the product. Information on alternative application methods is listed in the section “Usage Variations and FAQ’s”.

- Fundamentals™ Underglazes can be used directly from the jar, but it is recommended to put onto a tile to avoid possible contamination of the remaining product in the jar. Make sure the consistency is like melted ice cream.
- Apply to greenware, clay or bisque. Lightly dampening the ware with a moistened sponge before painting allows better adhesion to the ware.
- Dip a dampened, blotted brush into the color. Fully load the brush without dragging the brush on the side of the tile. Apply the color in a flowing motion; if it starts to drag, reload the brush. The clay will absorb the moisture from the color, so care has to be used when applying.
- As you flow the color on, avoid ridges and runs. Brush these flaws out as you apply the color. On an embossed piece do not allow excess color to build up. Dab the excess out of the crevices with the tip of the brush as you apply Fundamentals™ Underglazes.
- Apply the first coat. When the dark wet look has disappeared, apply the second coat at a right angle to the first. The third is then applied at a right angle to the second coat. This will assure better coverage.
- Fundamentals™ Underglazes can also be applied by sponging and spattering.
- Generally, a clear glaze finish is applied after to bring out the true color and vividness of the product. We recommend S-2000 Crystal Clear Dipping.
- The higher the fire (06-10), the brighter and deeper the Fundamentals™ Underglazes will perform.
- If applying to greenware or clay: paint design on the ware, fire to cone 04 and then apply a transparent glaze and fire to cone 06 (two firings). If done this way, Fundamentals™ Underglazes color will be lighter. If applying to bisque allow the Fundamentals™ Underglazes to dry and apply clear glaze and fire to cone 05.
- Opaque Fundamentals™ Underglazes are not true color out of the jar. Firing is required to mature their color.
- Colors can be intermixed for custom colors. Fundamentals™ can be fired to higher temperatures. Check label of specific color for performance at higher temperatures. True color appears after a clear glaze is applied and fired.

USAGE VARIATIONS AND FAQS

Q: How can Fundamentals™ Underglazes be used in Raku firing?

A: Fundamentals™ Underglazes can be used to put a background color down before burnishing and applying horsehair or feathers in a raku firing.

Q: How do I get the most consistent results at cone 06 and cone 6 using Mayco Fundamentals™ Underglazes?

A: Cone 06: Apply 2-3 even coats of Fundamentals™ Underglazes to bisque. If the form you are painting has texture, dab excess color out of texture, and never allow the glaze to pool in the texture. Before clear glazing, fire the Fundamentals™ Underglazes onto the form you are using at cone 04. Once the Fundamentals™ Underglazes are fired on, paint 2-3 even coats of clear glaze over the piece. Once the clear glaze is completely dry, fire the piece to cone 06 on medium speed.

Cone 6: Apply 2-3 even coats of Fundamentals™ Underglazes to bisque. If the form you are painting has texture, dab excess color out of texture, and never allow the glaze to pool in the texture. Once the glaze is completely dry, paint 2-3 even coats of clear glaze over top. Once the clear glaze is completely dry, fire to cone 6 on medium speed.

Q: How do Fundamentals™ Underglazes perform with additional products and techniques?

A: Fundamentals™ Underglazes work great in a wide variety of applications and techniques. On:

- Greenware
- Bisque
- With and without clear glaze
- Over other glazes
- With silkscreens
- Sgraffito
- Mishima
- Can be watered down to create a water color look
- Can be used for bold mass tones of color
- Mix colors together to create a pallet for painting
- Works well for highly detailed work as well as more loose design work
- Can be applied with line applicators or used with Silkscreens

Q: What is meant by “polishing” an Fundamentals™ Underglazes?

A: While opaque Fundamentals™ Underglazes can be applied to ware in many ways from brushing to sponging, there is an interesting technique that has survived the tests of time. One of the most striking looks can be achieved by polishing the surface of the color to produce a soft sheen, and then leaving it unglazed.

The finished surface resembles earthenware. This technique cannot be obtained by any other method and is unique to opaque Fundamentals™ Underglazes. The beautiful surface is achieved by buffing the opaque Fundamentals™ Underglazes while it is still damp. While the surface is somewhat sealed, it will not be waterproof. This technique is only used on decorative items and is not suitable for surfaces that come into contact with food or drink. This technique creates a great background for spot glazing using a gloss or matte glaze. A smooth surfaced piece works best for polishing Underglazes rather than an embossed piece.

Care must be taken to avoid removing the color from sharp angles and rims. It is easy to scratch the ware accidentally with your fingernails, etc. Be careful when applying the color as any ridges or buildup of color will affect the end result. Use a silk sponge to apply the color to eliminate some of these problems and to give a different look. Some colors polish better than others.

Apply three coats of Fundamentals™ Underglazes with a brush, in the usual manner, to assure all over coverage. Apply the colors very evenly and smoothly. Do not allow prolonged drying time between the coats. Thin the same color with water in equal proportions, mix well. Using a ball of soft facial tissue or soft T-shirt material, apply the thinned mixture to a small area about the size of the palm of your hand. When the shiny wet look disappears and the color will not stick to the pad, polish that area briskly. The pressure should be light and the movement fast. It is the friction from the polishing that develops the sheen.

Continue to apply the diluted color mixture to a small area at a time, each one slightly overlapping the previous one, until the entire piece has been polished. Now buff the entire surface again, without wetting, until a high sheen has developed. If the color looks blotchy, this will disappear as the piece dries. If you wish to add a design using other opaque Fundamentals™ Underglazes, be careful not to mar the surface. Use a soft cloth to hold the piece to protect it from body oils and moisture. Wait until the piece has thoroughly dried before tracing the design so the pressure of the transferring does not mar the surface.

LABEL DIRECTIONS

"Shake well. Apply to wet clay, greenware or cone 04 bisque, use for design or solid coverage, firing range from cone 06 to cone 10. To intensify color or for use on dinnerware, apply clear or matte clear glaze. For use on clay or greenware, apply and allow to dry. Fire to shelf cone 04. If desired, apply clear glaze and re-fire to cone 06-05 for earthenware and cone 5-10 for stoneware (999°C - 1285°C). For use on bisque, apply clear glaze if desired and re-fire earthenware to cone 06 and cone 5-10 for stoneware. Do not spray apply without personal protective equipment. For all product information, visit www.maycocolors.com

Tips for use:

- Apply 3 coats for opacity; fewer for design. Can be thinned for water-color effect.
- Apply to bisque, wet clay or greenware.
- Color can be applied with brush or sponge.
- Use in sgraffito, majolica, spatter or burnishing techniques.
- Intermixable for custom colors.
- Apply matte or gloss clear glaze to intensify color or for use with dinnerware.
- Apply gloss clear glaze to add shine.
- Note individual color labels for performance at higher temperatures.

Special Notes:



MaycoColors.com

Shake well. Apply to wet clay, greenware or cone 04 bisque, use for design or solid coverage, firing range from cone 06 to cone 10. To intensify color or for use on dinnerware, apply clear or matte clear glaze. For use on clay or greenware, apply and allow to dry. Fire to shelf cone 04. If desired, apply clear glaze and re-fire to cone 06-05 for earthenware and cone 5-10 for stoneware (999°C - 1285°C). For use on bisque, apply to cone 04 bisque, apply clear glaze if desired and re-fire earthenware to cone 06 and cone 5-10 for stoneware. Do not spray apply without personal protective equipment. For all product information, visit www.maycocolors.com.



Mayco Colors Contacts:
 U.S. - Hilliard, OH 43026
www.maycocolors.com
 614-876-1171
 EU - Brickkiln Lane
 Etruria, Stoke-on-Trent
 United Kingdom, ST4 7BP
 (44) 01782-219816
 Fax (44) 01782-286506

SAFETY INFORMATION

AP Non-Toxic, Food Safe and Dinnerware Safe, a clear glaze must be applied as surface is porous.

ASTRO GEMS™



Astro Gems™ are an underglaze-based textural glaze that contains tiny crystals. When fired, these crystals provide jewel-like spots on the matte surface of the glaze. Astro Gems™ can be applied to both green-ware and bisque. Astro Gems™ are certified AP Non-Toxic.

AVAILABLE SIZES

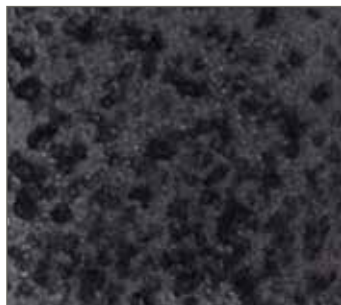
- 4 oz
- Pint (Black Diamond only)

APPLICATION RECOMMENDATIONS

- Shake and stir for 5-6 seconds before use - you'll want to make sure the crystals are evenly dispersed in the glaze before applying.
- Apply 3 smooth, even coats to properly fired shelf cone 04 bisque using a soft brush, such as a CB-604 #4 Soft Fan Brush.
- Moisten the brush with water first. Try to get the brush fully saturated (loaded) and apply alternate coats in a perpendicular direction to the previous coat (helps to evenly distribute the crystals on your surface).
- Fire to shelf cone 06.



AS-510
White Opal



AS-512
Black Diamond



AS-513
Golden Sand

USAGE VARIATIONS & FAQs

Q: How can I create custom colors?

A: AS-510 White Opal Astro Gem can be tinted using Mayco Underglazes. You may find success mixing stains - always conduct small tests before using on a wider scale. We recommend using the darkest color of Underglaze because the white will lighten.

Q: What firing and application tips can you provide?

A: Astro Gems™ behave much like an underglaze: they remain porous after firing, they do not have to be stilted, etc. However, if crystals are applied to the bottom of a piece they will need to be stilted. We recommend that you do not apply crystals to the bottom of a piece as the fired crystals may scratch and mar tabletops and other household surfaces. Either apply unstirred Astro Gems™ to the bottom of your piece (leaving the crystals settled-out on the bottom of the jar) or wipe them away while the glaze is still wet. Avoid heavy application in recessed areas of detailed pieces. Any puddles should be dabbed out before the glaze dries. When applying these glazes to bisque allow for more drying time between coats.

Q: How can the fired surface of Astro Gems™ be protected or sealed?

A: We suggest sealing Astro Gems™ and Underglazes with a stone (mason stain) to protect them from dirt, water, etc. It can also be treated with AC-514 Matte Spray sealer after the project has been fired. Sealers used for outdoor patio decks are the most similar to Mayco's past Repel/Repellent product.

LABEL DIRECTIONS

"Stir and shake well to disperse crystals. Apply 3 coats to greenware, changing direction with each coat for better distribution of crystals. Fire to shelf cone 04. Do not spray apply without proper personal protective equipment. Food Safe, Non-Toxic and Non-Hazardous when used according to manufacturer's directions. Not suitable for dinnerware due to surface characteristics. For more information, refer to SDS at www.maycocolors.com"

Stir and shake well to disperse crystals. Apply 3 coats to greenware or bisque, changing direction with each coat for better distribution of crystals. Fire to shelf cone 04 (1060°C) for greenware or shelf cone 06 (999°C). Do not spray apply without proper personal protective equipment. Non-toxic and Non-Hazardous when used according to manufacturer's directions. May not be suitable for dinnerware as the fired surface characteristics which can make the surface difficult to properly clean. For more information, refer to MSDS at www.maycocolors.com



Astro Gem®

★ ★ Brush-On Textural Glaze

Non-Toxic Glaze



Conforms to
ASTM D 4236

Made in USA

Mayco Colors Contacts:
U.S. - Hilliard, OH 43026
www.maycocolors.com
614-876-1171
EU - Bricklin Lane
Etruria, Stoke-on-Trent
United Kingdom, ST4 7BP
(44) 01782-219816
Fax (44) 01782-286506

SAFETY INFORMATION

Astro Gem® glazes has been certified as AP Non-Toxic, safe for use by artists of all ages when used according to manufacturer's directions. However, Astrogems are not recommended for dinnerware as they exhibit surface textures such as cracks and crevices. While the glazed surface may pass lead & cadmium leach tests, and therefore legally considered Food Safe, attempts to adequately clean the textured surface may cause the underlying porous ware to absorb water and fail. Recommended for ornamental use only.

LOW FIRE CLEAR GLAZES - BRUSHING

Mayco clear glazes preserve and enhance the surface of your work. Functionally, clear glaze forms an impervious barrier that protects against liquids, dirt and abrasion. Aesthetically, our clear glazes provide a gloss or matte finish over top of your colored glaze decoration. Please refer to specific product labels and our website for detailed instruction on using and storing clear glazes. All Mayco Brushing Clear glazes are AP Non-Toxic, For Food Safe and Dinnerware Safe, when used according to manufacturer's directions.

GENERAL USE

Brushing glazes differ from dipping versions as they contain organic additives, making the brushing glazes thicker, more viscous than dipping formulas. The amount of glaze deposited on bisque is primarily a function of glaze viscosity and the amount of time the bisque is left in the glaze – careful attention to these two details are critical to obtaining satisfactory results. Refer to Mayco's YouTube channel for more information on Clear Glaze Dipping at: <https://www.youtube.com/MaycoColors>



NT-BR CLEAR ONE BRUSHING

Fast drying and gloss finish. Compatible with Chrome Tin pigments. Luster compatible. Certified AP Non-Toxic & Food Safe.

Available sizes:

- 4 oz.
- Pints
- Gallon



S-2101 CRYSTAL CLEAR BRUSHING

Clean, clear surface and gloss finish. Luster compatible. Certified AP Non-Toxic & Food Safe.

Available sizes:

- 4 oz.
- Pints
- Gallon & 3 Gallon Pail



C-300 MATTE TRANSPARENT BRUSHING

Matte sheen at cone 06. Will gloss at higher temperatures. Luster compatible. Certified AP Non-Toxic and Food Safe.

Available sizes:

- 4 oz.
- Pints
- Gallon

USAGE VARIATIONS & FAQs

Q: *What is a clear glaze?*

A: Clear glazes are glass coatings used to completely seal the ware (decorated or undecorated, making the ware impervious to liquids. They are also used to boost the brilliance of the underlying color. Clear glazes can come in different finishes such as gloss (NT-BR, S2101, S2000 and NT-Clear) or matte (C-300).

Q: *Should I use a dipping or brushing clear glaze?*

A: Choosing a dipping or brushing version of a clear glaze is dependent on application preference, quantity of glazing and time. Mayco offers pre-made low fire clear glaze in both dipping and brushing formulas. Brushing clear glazes differ from dipping versions in that they contain organic additives, which make the brushing glazes thicker (viscous) than dipping formulas. These additives are meant to improve the flow of glaze from the brush and assist with the even-ness of application, enhancing the fired surface finish. The amount of glaze deposited on the ware is primarily a function of glaze viscosity and the number of applications. Typically, 2 applications are required, allowing dry time between coats.

Dipping clear glazes contain fewer organic additives, making dipping glazes less viscous than their brushing counterpart. The amount of glaze deposited on the ware is a function of glaze viscosity and the amount of time left in the glaze. Often dipping glazes are preferred in a studio or production environment where a large quantity of ware is processed. To learn different dipping methods and tips, view our instructional video on YouTube or at www.maycocolors.com.

Q: *What does coefficient of expansion (COE) mean and how does it impact my choices of glazes, clay or bisque?*

A: Glaze and clay/bisque bodies are both ceramic materials. During the firing process they expand and then contract together; the rate of expansion/contraction can be measured and mathematically stated as a coefficient of expansion.

SPECIAL NOTES

May not be compatible with all Red Clays as a blueish haze may appear after firing. Test first.

LABEL DIRECTIONS

Clear One Brushing NT-BR

Shake well. Apply 1-2 coats to shelf cone 04 (1060°C) bisque, unglazed or decorated with low fire glazes or underglazes. Dry thoroughly and fire to shelf cone 06 or 05 (999°C-1046°C). Fires to a gloss finish. Do not spray apply. Food Safe, Non-Toxic and Non-Hazardous when used according to manufacturer's directions. For complete safety data, SDS and additional product information, visit us at www.maycocolors.com. Special Notes: Not recommended for use at higher temperatures.

Crystal Clear Brushing S-2101

Shake well. Apply 2 coats to shelf cone 04 bisque, unglazed or decorated with low fire glazes. Let dry and fire to shelf cones 06 or 05 (999°C-1046°C). Fires to a gloss finish. Do not spray apply without personal protective equipment. For complete safety data, MSDS and additional product information, please visit us at www.maycocolors.com. Food Safe, Non-Toxic and Non-Hazardous when used according to manufacturer's directions.

Matte Transparent Brushing C-300

Shake well. Apply 3 coats to shelf cone 04 bisque (1060°C). Dry thoroughly and fire to shelf cone 06 (999°C). Do not spray apply without proper personal protective equipment. Food Safe, Non-Toxic and Non-Hazardous when used according to manufacturer's directions. For more information, refer to MSDS at www.maycocolors.com.

- Beautiful, smooth, high-gloss finish
- Non-Toxic, non-hazardous and food safe
- Compatible with Terra Cotta Clay
- Lustre Compatible
- Apply 1 coat on chrome-tin pigments; heavier coatings will develop a hazy finish

Directions:
Shake well. Apply 1-2 coats to shelf cone 04 (1060°C) bisque, unglazed or decorated with low fire glazes or underglazes. Dry thoroughly and fire to shelf cone 06 or 05 (999°C-1046°C). Fires to a gloss finish. Do not spray apply. Food Safe, Non-Toxic and Non-Hazardous when used according to manufacturer's directions. For complete safety data, SDS and additional product information, visit us at www.maycocolors.com

Special Notes:
Not recommended for use at higher temperatures.

Made in USA
Mayco Colors Contact:
U.S.: Hilliard, OH 43026
www.maycocolors.com
614-876-1171

EU: Brickkiln Lane
Etruria, Stoke-on-Trent
United Kingdom, ST4 7BP
(44) 01782-219816
Fax (44) 01782-286506

- Beautiful, smooth, high-gloss finish
- Application with soft fan brush is recommended.
- Lustre compatible.
- Non-toxic, non-hazardous and food safe.

Shake well. Apply 2 coats to shelf cone 04 bisque, unglazed or decorated with low fire glazes. Let dry and fire to shelf cones 06 or 05 (999°C-1046°C). Fires to a gloss finish. Do not spray apply without personal protective equipment. For complete safety data, MSDS and additional product information, please visit us at www.maycocolors.com. Food Safe, Non-Toxic and Non-Hazardous when used according to manufacturer's directions.

Special Notes:

Made in USA
Mayco Colors Contact:
U.S.: Hilliard, OH 43026
www.maycocolors.com
614-876-1171

EU: Brickkiln Lane
Etruria, Stoke-on-Trent
United Kingdom, ST4 7BP
(44) 01782-219816
Fax (44) 01782-286506

Shake well. Apply 3 coats to shelf cone 04 bisque (1060°C). Dry thoroughly and fire to shelf cone 06 (999°C). Do not spray apply without proper personal protective equipment. Food Safe, Non-Toxic and Non-Hazardous when used according to manufacturer's directions. For more information, refer to MSDS at www.maycocolors.com.

Special Notes:

Made in USA
Mayco Colors Contact:
U.S.: Hilliard, OH 43026
www.maycocolors.com
614-876-1171

EU: Brickkiln Lane
Etruria, Stoke-on-Trent
United Kingdom, ST4 7BP
(44) 01782-219816
Fax (44) 01782-286506

SAFETY INFORMATION

All Mayco Brushing Clear glazes are AP Non-Toxic, Food Safe and Dinnerware Safe, when used according to manufacturer's directions.



LOW FIRE CLEAR GLAZES - BRUSHING

SPECKTA-CLEAR



SG-701
Star dust
*Over SC-76 Cara-Bein Blue

Speckta-Clear functions as a high-gloss clear glaze with the added surprise of specks! With only one coat on a glazed background, or two coats on an unglazed, bare bisque background, Speckta-Clear provides a pleasing compliment or contrast of shiny and colorful specks. Designed to be used at cone 06, this clear glazes can be used for all over coverage or in design with Stroke & Coat®, Foundations, Fundamentals™ Underglazes, and other Mayco glazes. How is that for a creative spark?

AVAILABLE SIZES:

- 4 oz.
- Pints

APPLICATION RECOMMENDATIONS

The following application recommendations are based upon the original product development intent and use for the product. Information on alternative application methods is listed in the section "Usage Variations and FAQ's".

- Functions as a high-gloss clear glaze with speckles
- Stable & non-moving at low fire
- Apply over base-coated ware or directly onto undecorated ware
- Broad firing range: cones 06-6. Check "Special Notes" for cone 6 performance
- Works well over chrome-tin pigments
- Heavy application will develop a hazy finish
- Use for all over coverage or in design with Stroke & Coat®, Foundations®, Underglazes, and other Mayco glazes.
- AP Non-Toxic, For Food Safe and Dinnerware Safe, when used according to manufacturer's directions.



SG-702
Celebration
*Over SC-55 Yella Bout it and unglazed bisque



LABEL DIRECTIONS:

Functions as a high-gloss clear glaze. Shake well. Apply 1 even coat to base-coated ware or 2 even coats to cone 04 (1060 °C) undecorated ware. Allow to dry. Fire to cone 06/05 (999 °C – 1046 °C). May fire to higher temperatures; see “Cone 6 Results” for performance. Test first. Do not spray apply. Visit MaycoColors.com for safety data, SDS, and additional product information. Non-Toxic and Non-Hazardous when used according to manufacturer’s directions.



SAFETY INFORMATION

Mayco Speckta-Clears are AP Non-Toxic, Food Safe and Dinnerware Safe, when used according to manufacturer’s directions.

LOW FIRE CLEAR GLAZES - DIPPING

Mayco clear glazes preserve and enhance the surface of your work. Functionally, clear glaze forms an impervious barrier that protects against liquids, dirt and abrasion. Aesthetically, our clear glazes provide a gloss or matte finish over top of your colored glaze decoration. Please refer to specific product labels and our website for detailed instruction on using and storing clear glazes. All Mayco Dipping Clear glazes are Certified AP Non-Toxic and Food Safe and Dinnerware Safe when used according to manufacturer's directions.

GENERAL USE

Mayco offers two clear dipping glazes: NT-CLR and S-2000. Dipping glazes differ from brushing versions as they contain fewer organic additives, making the dipping glazes less viscous than brushing formulas. Dipping glazes allow for quick and efficient glazing on large pieces or a large number of pieces. The amount of glaze deposited on bisque is primarily a function of glaze viscosity and the amount of time the bisque is left in the glaze – careful attention to these two details are critical to obtaining satisfactory results.



NT-CLR ONE DIPPING

Fast drying and a gloss finish. NT-CLR balances the production needs of a high volume ceramic studios with superior fired performance. NT-CLR dries quickly but stays open long enough to allow for drips and runs to be smoothed away with a fan brush. Higher levels of suspension agents slow down the glaze's tendency to settle, which means you'll need to remix less frequently. A lower coefficient of expansion (COE) improves NT-CLR's ability to withstand thermal shock and minimize crazing. This glaze will fire to a smooth, crystal clear finish and has been lab tested to be compatible with leading color glaze lines. The bluish-green dye helps identify where glaze has been applied and guard against over application. Luster compatible.

Available sizes:

- 3 Gallon pail



S-2000 CRYSTAL CLEAR DIPPING

Ideal for large quantities of pieces. Dinnerware safe and luster compatible. S-2000 offers the same clarity as NT-CLR but contains fewer additives and is therefore thinner than NT-CLR. This glaze has a higher coefficient of expansion (higher thermal expansion) and is more tolerant of high expansion bodies. S-2000 contains a light-blue dye to help you see where the glaze was applied. The fundamental performance difference between our two clear glazes is in their rates of expansion: NT-CLR has a lower rate of expansion, S-2000 a higher rate. As you gain experience with specific clays or bisque bodies and monitor firing results, you'll understand which clear glaze is right for you.

Available sizes:

- Gallon & 3 Gallon pail

APPLICATION RECOMMENDATIONS

The following application recommendations are based upon the original product development intent and use for the product. Information on alternative application methods is listed in the section "Usage Variations and FAQ's".

- Container should be kept tightly closed when not in use. Store in a cool, dry place away from heat and vibration.
- Mixing with a power mixer is required prior to first use (hardware/paint stores offer many drill mounted mixer attachments). Mix for 6-8 minutes. Using a DuPont M-50 viscosity cup or NT-CLR, check viscosity for our

recommended viscosity range of 19-22 seconds. If glaze is too thin, remix for an additional 2-3 minutes and re-measure the viscosity. If too thick, add distilled water in 1/2 cup increments. Remix and retest.

- For best dipping results and operational efficiency use of a dipping container 24" to 30" deep, holding 15 to 30 gallons of glaze.
- Color glazes applied to bisque ware should be thoroughly dry before dipping. Do not force dry color glazes by using heated air sources (hair dryer, heat lamp) as doing so may affect the performance of both the color and clear glazes.
- The use of protective equipment, such as an apron or smock, rubber gloves, safety glasses or similar eyewear and shoe coverings is recommended. DO NOT spray apply without proper personal protective equipment.
- Using dipping tongs (or by hand, wearing latex or rubber gloves), fully immerse the entire piece using a smooth in-and-out motion. The duration of the dip should not exceed 1 - 1 ½ seconds. Dip only once!
- Remove the bisque from the dipping glaze rotate 90° and immediately shake vigorously 2-3 times, rotating the piece as you shake, to minimize drips and runs. Use a soft fan brush (RB-140) moistened in the dipping glaze to pat away drips and runs and to touch up the area where the bisque was held.
- The amount of clear glaze deposited on the ware can involve many variables, such as bisque porosity, glaze viscosity, and your dipping mechanics. Fired results can be impacted by the amount of color glaze, firing time and temperature. As you gain dipping experience you will learn how to make adjustments for these variables and improve your fired results.
- NEVER finger sand to remove drips or imperfections. Sanding can create dust, which can be harmful if inhaled.
- While dipping, re-stir the glaze as needed (15-20 minutes) to keep it fully dispersed. Measure the viscosity each time you mix.
- Clean up any spills with a damp mop or sponge to minimize the creation of harmful dust.
- Allow glaze to dry thoroughly before firing. Recommended firing is shelf cone 06 (999°C, 1828°F). In some instances glaze clarity may be improved by firing to shelf cone 05 (1031°C, 1888°F).
- We recommend the use of a dipping log that tracks production lot numbers in the event of technical issues.

USAGE VARIATIONS & FAQs

Q: What does coefficient of expansion (COE) mean and how does it impact my choices of glazes, clay or bisque?

A: Glaze and clay/bisque bodies are both ceramic materials. During the firing process they expand and then contract together; the rate of expansion/contraction can be measured and mathematically stated as a coefficient of expansion.

If the two materials are not compatible – if they expand or contract at widely varying rates – the glaze may crack or chip off the body (please understand that incompatible COE's are only one cause for glazes to chip or crack).

Mayco strives to produce glazes that are as tolerant of as many major sources of earthenware and stoneware bodies as is feasible. We stock over 20 types of clay bodies for testing purposes and glaze and fire samples from every shipment of bisque. But there are hundreds of clay bodies in use around the world, with hundreds of color glaze and clear glaze combinations being used on these bodies.

With respect to clear glaze: if you are experiencing an inordinate amount of shivering – glaze chipping off the body– you may want to try S-2000. If you are experiencing crazing – glaze in which cracks appear – you may want to try NT-CLR.

Q: What is the proper way to use a viscosity cup?

A: Holding the viscosity cup in one hand and a stopwatch in the other submerge the cup into the glaze. Start the stopwatch the moment the bottom of the cup clears the surface of the glaze. When the glaze stream breaks, stop the clock. Cup should be empty or nearly empty.

Q: How do I dip large pieces of bisque ware?

A: Dip two-thirds of the ware into the glaze. Dip the remaining one-third up to the previous dip line and avoid overlapping as much as possible. Moisten a soft fan brush (RB-140) in the dipping glaze and gently pat the seam line. Be careful too to apply too much pressure with the brush as you may smear the underlying colors and design.

Q: Why must distilled water be used to thin the glaze?

A: Tap water or bottled water may contain minerals and impurities that could react with the dipping glaze.

Q: Occasionally I find hard, white pellets in my clear glaze. What are they?

A: Oolites are little pebbles of calcium carbonate. They form naturally although the exact reasons for their formation are unclear. With respect to clear glaze, their occurrence is usually during the late summer months – the combination of the warm temperatures and vibration the glaze may experience during transit may be factors. These materials can be strained out of the glaze using a fine mesh sieve.

Q: How long must the clear glaze dry before it can be fired?

A: 4-5 hours at a minimum, 12 hours would be best. Hazy finishes, trapped bubbles and crawling can occur if the clear glaze has not thoroughly dried before firing.

Q: The fired finish appears hazy, white or bluish in color, and/or has a surface resembling hundreds of little pores. What can be done to obtain a clear, smooth finish?

A: This result may be due to heavy application glaze – color and clear – or insufficient firing temperature. Adjustments to your dipping process may include lowering the viscosity of the glaze itself or increasing the speed of your dipping mechanics.

Adjustments to the firing process may include slowing down the firing rate, added a 10-15 minute hold at the end of the firing cycle (computer controlled kilns), or firing hotter – to cone 05. Non-toxic glazes will not move or run as much as leaded glazes; our internal testing of major brands of color and clear glazes on Chinese, Italian and US domestic bisque show that higher temperatures and fewer layers of glaze (color and clear) produce better fired results. You may want to test our findings to see if they help you achieve better fired results.

Re-firing the piece may be possible to help clear up the finish. Always use pyrometric cones, such as Orton's self-supporting witness cones, to make sure your kiln is firing to the proper temperature. Place cones on the top, middle and bottom shelves to test for even temperatures in your kiln. If you normally use cones on the middle shelf only you should do the three-shelf test periodically to make sure you are getting even heating in the kiln.

Q: I find dipping tongs difficult to control and use – especially for large pieces. What is the recommended procedure for dipping by hand?

A: Use latex or rubber gloves to cover your hands (primarily as a precaution against skin irritation). Dip 98% of the piece into the dipping glaze and shake vigorously 2-3 times. Moisten a soft fan brush (RB-140) in the dipping glaze and pat glaze onto the unglazed area (where you held the piece).

SAFETY INFORMATION

All Mayco Dipping Clear glazes are AP Non-Toxic, Food Safe and Dinnerware Safe, when used according to manufacturer's directions.



CLEAR ONE NT-CLR/3

Non-Toxic
Clear
Dipping Glaze

Non-Toxic • Lead Free • Food Safe

Made in U.S.A

Contents /
Contenido:
3 Gal Pail
11.4 Liter



0 97539 17099 1

INSTRUCTIONS FOR USE:

For best results please read and follow the usage and safety instructions below:

1. Container should be kept tightly closed when not in use. Store in a cool, dry place away from heat and vibration.
2. Mixing with a power mixer is required prior to first use (hardware/paint stores offer many drill mounted mixer attachments). Mix for 6-8 minutes. Using a DuPont M-50 viscosity cup, check viscosity for our recommended viscosity range of 19-22 seconds. If glaze is too thin, remix for an additional 2-3 minutes and re-measure the viscosity. If too thick, add distilled water in 1/2 cup increments. Remix and retest.
3. For best results and operational efficiency, we recommend use of a dipping container 24" to 30", holding 15 to 30 gallons of glaze.
4. Color glazes applied to bisqueware should be thoroughly dry before dipping. Do not force dry color glazes by using a hair dryer, heat lamp, hot plate, etc., as doing so may affect the performance of both the color and clear glazes.
5. The use of protective equipment, such as an apron or smock, rubber gloves, safety glasses or similar eyewear and shoe coverings is recommended. DO NOT spray apply without proper personal protective equipment.
6. Using dipping tongs (or by hand, wearing latex or rubber gloves), fully immerse the entire piece using a smooth in-and-out motion. The duration of the dip should not exceed 1 - 1 1/2 seconds. Dip only once!
7. Remove the bisque from the dipping glaze and rotate 90°; quickly shake once or twice to minimize drips and runs. Use a flat or soft fan brush (RB-140) to pat away drips and runs and to touch up the area where the bisque was held.
8. The amount of clear glaze deposited on the ware can involve many variables, such as bisque porosity, glaze viscosity, and your dipping mechanics. Fired results can be impacted by the amount of color glaze, firing time and temperature. As you gain dipping experience you will learn how to make adjustments for these variables and improve your fired results.
9. NEVER finger sand to remove drips or imperfections. Sanding can create dust, which can be harmful if inhaled.
10. While dipping, re-stir the glaze as needed (15-20 minutes) to keep it fully dispersed. Measure the viscosity each time you mix.
11. Clean up any spills with a damp mop or sponge to minimize the creation of harmful dust.
12. Allow glaze to dry thoroughly before firing. Recommended firing is shelf cone 06 (999°C, 1828°F). In some instances glaze clarity may be improved by firing to shelf cone 05 (1031°C, 1888°F).
13. We recommend the use of a dipping log that tracks production lot numbers in the event of technical issues.

CONE 6 RESULTS: NO COLOR CHANGE

Mayco Colors Contacts:
U.S. -
4077 Weaver Court South
Hilliard, OH 43026
(614) 876-1171
maycocolors.com

EU -
Brickkiln Lane
Etruria, Stoke-on-Trent
United Kingdom, ST4 7BP
(44) 01782-219816
Fax (44) 01782-28506



CRYSTAL CLEAR DIPPING S-2000

Non-Toxic
Clear
Dipping Glaze

Non-Toxic • Lead Free • Food Safe

Made in U.S.A

Contents/
Contenido:
3 Gal Pail
11.4 Liters



0 97539 35447 e

INSTRUCTIONS FOR USE:

For best results please read and follow the usage and safety instructions below:

1. Container should be kept tightly closed when not in use. Store in a cool, dry place away from heat and vibration.
2. Mixing with a power mixer is required prior to first use (hardware/paint stores offer many drill mounted mixer attachments). Mix for 6-8 minutes. Using a DuPont M-50 viscosity cup, check viscosity for our recommended viscosity range of 19-22 seconds. If glaze is too thin, remix for an additional 2-3 minutes and re-measure the viscosity. If too thick, add distilled water in 1/2 cup increments. Remix and retest.
3. For best results and operational efficiency, we recommend use of a dipping container 24" to 30", holding 15 to 30 gallons of glaze.
4. Color glazes applied to bisqueware should be thoroughly dry before dipping. Do not force dry color glazes by using a hair dryer, heat lamp, hot plate, etc., as doing so may affect the performance of both the color and clear glazes.
5. The use of protective equipment, such as an apron or smock, rubber gloves, safety glasses or similar eyewear and shoe coverings is recommended. DO NOT spray apply without proper personal protective equipment.
6. Using dipping tongs (or by hand, wearing latex or rubber gloves), fully immerse the entire piece using a smooth in-and-out motion. The duration of the dip should not exceed 1 - 1 1/2 seconds. Dip only once!
7. Remove the bisque from the dipping glaze and rotate 90°; quickly shake once or twice to minimize drips and runs. Use a flat or soft fan brush (RB-140) to pat away drips and runs and to touch up the area where the bisque was held.
8. The amount of clear glaze deposited on the ware can involve many variables, such as bisque porosity, glaze viscosity, and your dipping mechanics. Fired results can be impacted by the amount of color glaze, firing time and temperature. As you gain dipping experience you will learn how to make adjustments for these variables and improve your fired results.
9. NEVER finger sand to remove drips or imperfections. Sanding can create dust, which can be harmful if inhaled.
10. While dipping, re-stir the glaze as needed (15-20 minutes) to keep it fully dispersed. Measure the viscosity each time you mix.
11. Clean up any spills with a damp mop or sponge to minimize the creation of harmful dust.
12. Allow glaze to dry thoroughly before firing. Recommended firing is shelf cone 06 (999°C, 1828°F). In some instances glaze clarity may be improved by firing to shelf cone 05 (1031°C, 1888°F).
13. We recommend the use of a dipping log that tracks production lot numbers in the event of technical issues.

CONE 6 RESULTS: NO COLOR CHANGE

Mayco Colors Contacts:
U.S. -
4077 Weaver Court South
Hilliard, OH 43026
(614) 876-1171
maycocolors.com

EU -
Brickkiln Lane
Etruria, Stoke-on-Trent
United Kingdom, ST4 7BP
(44) 01782-219816
Fax (44) 01782-28506



RAKU GLAZES



Mayco Raku glazes are designed to develop beautiful metallic lusters and crackle patterns when fired according to raku firing processes.

GENERAL USE

There are several methods and many nuances to raku firing - for our purposes here we define raku firing broadly as the processes of firing an earthenware body and glaze in a kiln, removing the ware from the kiln after it has reached proper temperature, placing it in a container of combustible material and enclosing the container to reduce the oxygen in the container.

APPLICATION RECOMMENDATIONS

The following application recommendations are based upon the original product development intent and use for the product. Information on alternative application methods is listed in the section "Usage Variations and FAQ's".

- Shake for 5-6 seconds before use. Stir well.
- Apply 3 coats to bisqueware.
- Use of a thermal shock-resistant raku clay body will help reduce the incidence of cracking.
- Do not glaze inside or bottom of ware.
- Thinner coats tend to produce greater metallic effects. If you are not getting the desired metallic results you can adjust your glaze application.
- Allow to dry thoroughly.
- Fire to cone 06 (1850°F, 1010°C) and hold for 5 minutes.
- Remove ware from kiln with tongs. If using an electric kiln make sure power is off, and allow to cool.
- Minimizing the distance between the kiln and the reduction container can improve the development of metallic colors.
- Place ware into metal lidded container with combustible materials
- Place lid on immediately to reduce oxygen
- The combustible materials will produce flames and smoke.
- Leave in container until cool, approximately 20 minutes and remove.
- After ware has completely cooled use water and a scouring pad to clean; cleaning will improve the luster and colors in the fired finish.
- Actual fired results will vary according to choice of clay body, glaze application thickness, glaze fire temperature, combustible materials, reduction process, kiln, etc.

NOTES ON SAFETY

Proper safety processes and personal protective equipment are very important when doing Raku as you are exposed to high heat, flames and smoke. Always wear fire protective clothing, fireproof gloves and protective eyewear. Do not open or insert tongs into an electric kiln without shutting off. Reduction process should take place outside of building due to flames and smoke. Do not spray apply glazes without a NIOSH approved respirator and other personal protective equipment. Non-Toxic and Non-Hazardous when used according to manufacturer's directions. Not recommended for food surfaces.

LABEL DIRECTIONS

"Mayco Raku Glazes will display a variety of iridescent, metallic and/or crackled fired surfaces. (Chip sample on label was fired to temperature, at the maximum ramp rate, and immediately reduced in a lidded container densely packed with a mixture of newspaper and straw)."

Non-Toxic and Non-Hazardous when used according to manufacturer's directions. Not Recommended for Food Surfaces."

Raku: From the 16th century firing methods founded in Japan to the 20th century reduction methods of the West, Raku firing processes always reveal exciting and dramatic results. Mayco Raku glazes produce a variety of metallized, brilliant and crackled finishes. All glazes are non-toxic, formulated using no added lead or other health caution materials.

Firing Tips: We recommend using a thermal shock-resistant Raku clay body (will help reduce the incidence of cracking). As glaze application, glaze fire temperature, combustible materials, firing process and kiln type vary from artist to artist, final results will vary. Our product testing involved a Raku clay body, Raku kiln and straw for our reduction material.

Raku can be done in a gas or electric kiln environment as well. Maturing the glaze at lower temperatures and using different combustible materials such as sawdust, newspaper, straw, etc will greatly influence the colors and look of the glaze. Minimizing the distance between the kiln and the reduction container will also enhance color.

Proper safety processes and personal protective equipment are very important when doing Raku as you are exposed to high heat, flames and smoke. Always wear heat and fire protective clothing and fireproof gloves. Do not open or insert tongs into an electric kiln without shutting off. Reduction process should take place outside of building due to flames and smoke.

Product Application: Apply 3 coats of Raku glaze to bisque-fired to cone 04 1940°F (1060°C). Do not glaze inside or on bottom of ware. Allow to dry thoroughly. Place ware in Raku kiln and fire to 1850°F (1010°C). Hold for 5 minutes. Remove ware from kiln with tongs (if using an electric kiln, make sure power is off) and allow to cool. For reduction firing, place ware into lidded metal container lined with combustible material. Place lid on immediately to reduce oxygen. The combustible material will produce flames and smoke. Leave in container until cool, approximately 20 minutes and remove. Clean ware with water and scouring pad.



Raku Glazes
RK-101 Copper Metallic

CERTIFIED NON-TOXIC
CONFORMS TO ASTM F963

No tóxico
Made in U.S.A.
Hecho en EE.UU.

Coloramics, LLC
Hilliard, OH 43026 USA
614-876-1171
www.maycocolors.com

Potclays Ltd.
Brickkiln Lane
Etruria, Stoke-on-Trent
United Kingdom, ST4 7BP
(44) 01782-219816
Fax (44) 01782-28506

Contents/Contenido
1 pint/473 ml



Raku: From the 16th century firing methods founded in Japan to the 20th century reduction methods of the West, Raku firing processes always reveal exciting and dramatic results. Mayco Raku glazes produce a variety of metallized, brilliant and crackled finishes. All glazes are non-toxic, formulated using no added lead or other health caution materials.

Firing Tips: We recommend using a thermal shock-resistant Raku clay body (will help reduce the incidence of cracking). As glaze application, glaze fire temperature, combustible materials, firing process and kiln type vary from artist to artist, final results will vary. Our product testing involved a Raku clay body, Raku kiln and straw for our reduction material.

Raku can be done in a gas or electric kiln environment as well. Maturing the glaze at lower temperatures and using different combustible materials such as sawdust, newspaper, straw, etc will greatly influence the colors and look of the glaze. Minimizing the distance between the kiln and the reduction container will also enhance color.

Proper safety processes and personal protective equipment are very important when doing Raku as you are exposed to high heat, flames and smoke. Always wear heat and fire protective clothing and fireproof gloves. Do not open or insert tongs into an electric kiln without shutting off. Reduction process should take place outside of building due to flames and smoke.

Product Application: Apply 3 coats of Raku glaze to bisque-fired to cone 04 1940°F (1060°C). Do not glaze inside or on bottom of ware. Allow to dry thoroughly. Place ware in Raku kiln and fire to 1850°F (1010°C). Hold for 5 minutes. Remove ware from kiln with tongs (if using an electric kiln, make sure power is off) and allow to cool. For reduction firing, place ware into lidded metal container lined with combustible material. Place lid on immediately to reduce oxygen. The combustible material will produce flames and smoke. Leave in container until cool, approximately 20 minutes and remove. Clean ware with water and scouring pad.



Raku Glazes
RK-105 Copper Penny

WARNING: MAY BE HARMFUL IF SWALLOWED. Contains: COPPER.
PRECAUTIONS: Avoid ingestion. Wash hands immediately after use. When using, do not eat, drink, or smoke. KEEP OUT OF REACH OF CHILDREN. FIRST AID TREATMENT: If swallowed, get prompt medical attention.

Mayco Colors Contacts:
U.S. - Hilliard, OH 43026
www.maycocolors.com
614-876-1171
EU - Brickkiln Lane
Etruria, Stoke-on-Trent
United Kingdom, ST4 7BP
(44) 01782-219816
Fax (44) 01782-286506

1 pint/473 ml
Made in USA



SAFETY INFORMATION

Raku glazes are not recommended for dinnerware due to the durability of the fired glaze. Some glazes, regardless of surface texture or porosity of underlying clay body, will be designated as not suitable for dinnerware as the fired glaze surface is not durable and can be impacted by contact with food or liquids. While it may not be harmful, it is certainly not desirable. Recommended for ornamental use only.

STONEWARE GLAZES



Mayco's Stoneware glaze assortment offers a variety of finishes, textures and endless possibilities for glaze combinations. Designed to perform from cones 5-10, in oxidation or reduction firing processes on stoneware clay body of choice. Artists will appreciate the consistency of performance and control of movement. Artists will find amazing glaze combinations to expand the creative possibilities in the studio. Whether it is a pairing with a Mayco Wash, one of our Clears or a complex surface like SW-127 Olivine, these layering techniques will improve the work of any clay enthusiast.

GENERAL USE

Use Mayco Stoneware Glazes on any midrange clay body. These glazes are intended for use at cone range 4-6 but are also stable and pleasing at cone 10. Can be used in oxidation, reduction or other alternative atmospheric firing conditions. Always test prior to use.

AVAILABLE SIZES

- Wide mouth pints
- 5 lbs. Dry

PRODUCT FEATURES

Stoneware Combinations

Artists can achieve incredible finishes with a simple two-glaze combination. Glazes shown: SW-177 Raspberry Mist over SW-100 Blue Surf Sand & Sea.



Use with Designer Liner

The most intricate details can be conveyed with Mayco's amazing Designer Liner under any of our translucent or clear Stoneware glazes.



Use with Stroke & Coat®

Artists can incorporate and combine other Mayco products with our Stoneware glazes. Use Stroke and Coat® with Stoneware glazes for an intense splash of color or add designs for unique results.



Use with Elements™

Combining Stoneware and Elements™ glazes add a striking layer of depth to your work. At cone 6, Elements™ produce a dripping effect that is difficult to imitate with a brush. Glazes shown: SW-173 Amber Quartz and EL-143 Cactus Flower.



Use with Jungle Gems™

Jungle Gems™ create intricate patterns during the firing process when small pieces of glass burst into color. Stoneware glazes in combination or blended with Jungle Gems™ add stunning effects. As crystals tend to flow at higher temps, we recommend limiting the number of crystals on the bottom third of vertical pieces. Glazes shown: CG-992 Mint Chip over SW-144 Lava Rock .





Cone 10 Firing or Alternative Atmospheric Firing Conditions

Many Mayco Stoneware glazes are pleasing and stable at cone 10 oxidation, reduction or other alternative atmospheric firing conditions, such as wood, salt or raku. Due to the variability, we recommend testing prior to application to artwork. Glazes shown: SW-177 Raspberry Mist over SW-117 Honeycomb, fired to cone 10.



Use on Different Clay Bodies

Glazes will perform differently based on clay body used. We recommend testing prior to application to artwork. Glazes shown: SW-166 Norse Blue applied over red stoneware clay body.



Dipping with Dry Stoneware Glazes

Use Mayco Stoneware Dry glazes (SD-#) for fast dipping and layering, creating natural flowing effects. Fine and uniform particle size and a thorough dry mixing process make Mayco Stoneware Dry glaze consistency so perfect that sieving is optional. Glazes shown: SD-173 Amber Quartz.

APPLICATION RECOMMENDATIONS

The following application recommendations are based upon the original product development intent and use for the product. Information on alternative application methods is listed in the section "Usage Variations and FAQ's".

For premixed products:

Stir well. Apply to soft-fired bisque (cone 04/06). Apply one, two or three coats depending on the result desired. Allow each coat to dry before applying the next coat. Fire to cone 5/6.

For dry mix products:

Tumble the bag prior to initial opening, which will remix the ingredient in case of settling during shipping. Water to dry material ratio is 16 oz. water to 1 pound of material. Add dry mix to water. Always use a NIOSH approved respirator when mixing dry materials. Whether dipping or spraying: let previous coat dry before applying additional coats. Fire to cone 5/6.

USAGE VARIATIONS & FAQs

Q: Mayco Stoneware Dry-Mix Glazes don't have to be sieved - why?

A: Our manufacturing process includes ball milling to very precise particles sizes. All you need to do to use our dry-mix glazes is add water, slake, stir and DIP. You'll love the sheeting action when dipping and be pleased to find that our dry-mix glazes will not settle out in your storage bucket.

Q: Can Mayco Stoneware Glazes be fired to cone 10?

A: Yes they can. Some will change significantly, some not much. A gallery of cone 10 reduction chips is available on Mayco's website.

(Each label provides unique information that is germane to that specific glaze. The following are the general statements that appear on all Stoneware labels)

LABEL DIRECTIONS

"The choice of clay body, thickness of glaze application, firing process and temperature will affect fired results. Always test in your kiln, on your clay body. Safety: Do not spray apply without personal protective equipment. Food Safe, Non-Toxic and Non-Hazardous when used according to manufacturer's directions. For additional product usage and safety information please refer to www.maycocolors.com"

Raspberry Mist is a gloss, semi-opaque glaze that displays shades of dark and light pink. The variation of glaze depends on application. The thicker the application, the more homogenous the color will be. The glaze will break translucent and appear brighter with thinner application.

Basic Application:

Stir well. Apply 2-3 coats to soft fired cone 04 bisque (1940°F/1060°C). Allow to dry and fire to preferred temperature, cones 5-10 (2167°F- 2345°F/1186°C- 1285°C). Testing recommended. For dipping, use SD-177 Raspberry Mist Dry.

Suggestions & Tips:

- Over application can cause pinholing.
- Brighter color and less variation at cone 5.
- Cone 10 results: Glaze darkens to a deeper red.
- Can be used in oxidation or reduction fires. Results will vary.

The choice of clay body, thickness of glaze application, firing process and temperature will affect the fired results. Always test in your kiln and on your clay body. Updated product usage tips and interesting glaze combinations can be found on our website: www.maycocolors.com.

Safety: Do not spray apply. Non-Toxic, Non-Hazardous and Food Safe when used according to manufacturer's directions. For additional safety information please refer to the product SDS at www.maycocolors.com.



Stoneware
SW-177 Raspberry Mist
Lead Free • Cone 5-10



1 pint/473 ml



Made in USA

Mayco Colors Contacts:
U.S. - Hilliard, OH 43026
www.maycocolors.com
614-876-1171
EU - Brickkiln Lane
Etruria, Stoke-on-Trent
United Kingdom, ST4 7BP
(44) 01782-219816
Fax (44) 01782-286506

SAFETY INFORMATION

Mayco Stoneware Classic glazes are a mixture of AP Non-Toxic and CL (Health Caution) label. Please review the individual color label for health classification and any appropriate warnings. All but one (see below) of the Stoneware glazes in the Classic line are Food Safe, according to FDA standards. Note: Finishedware producers may be required to have their ware food safe tested prior to introducing into commerce. The Stoneware Classic glazes (except 1) are also Dinnerware Safe when used according to manufacturer's directions and free of surface texture.

SW-132 Mirror Black is not Food Safe nor Dinnerware Safe due to the durability of the fired glaze. Some glazes, regardless of surface texture or porosity of underlying clay body, will be designated as not suitable for dinnerware as the fired glaze surface is not durable and can be impacted by contact with food or liquids. While it may not be harmful, it is certainly not desirable. SW-132 Mirror Black is recommended for ornamental use only.

STONEWARE CRYSTAL GLAZES



Mayco Stoneware Crystals Glazes are dazzling glazes that are designed to expand upon the surface with bursts of color. These glazes are intended for use at cone range 4-6 but are also stable and pleasing at cone 10. Can be used in oxidation, reduction or other alternative atmospheric firing conditions. Always test prior to use.

- Crystals will settle to the bottom of the jar and will need a good mixing prior to initial use. Re-stir between each coat. Stir with palette knife or other unpainted tool.
- Crystals will flow more than the base glaze. During your last coat, use your brush to evenly distribute the crystals over the top two-thirds of the piece and move away from the bottom third.
- Over-application or heavy deposition of the crystals can cause pinholing or running. While the glaze is wet, you can use your brush to redistribute the crystals to achieve balanced coverage.
- When storing a crystal glaze, you may consider storing upside down to facilitate crystal dispersion on the next use.

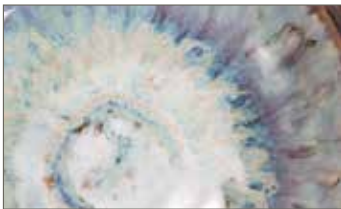
AVAILABLE SIZES

- Wide mouth pints
- 5 lbs. Dry

PRODUCT FEATURES

Stoneware Combinations

Artists can achieve incredible finishes with a simple two-glaze combination. Glazes shown: SW-176 Sandstone over SW-167 Sand & Sea.



Pouring with Stoneware Crystal Dry Glazes

For fast glazing and flowing effects, we recommend using Mayco's Stoneware Crystals Dry mix glazes (SD-#). Due to the crystals settling to the bottom, we recommend mixing thoroughly and pouring the mixed glazes onto your piece with a pour container or pitcher. Over application in the same area may cause crystals to fall off.



APPLICATION RECOMMENDATIONS

The following application recommendations are based upon the original product development intent and use for the product. Information on alternative application methods is listed in the section "Usage Variations and FAQ's".

- Stir well to get a good dispersion of crystals.
- Apply 2-3 coats using a fan or hake brush to the top two-thirds of the piece. During your last coat, use your brush to evenly distribute the crystals over the top two-thirds of the piece and move away from the bottom third.
- Apply to soft fired cone 04 bisque (1940°F/1060°C).
- Allow to dry and fire to preferred temperature, cones 5-10 (2167°F- 2345°F/1186°C -1285°C). Testing recommended.

LABEL DIRECTIONS

“The choice of clay body, thickness of glaze application, firing process and temperature will affect fired results. Always test in your kiln, on your clay body. Safety: Do not spray apply without personal protective equipment. Food Safe, Non-Toxic and Non-Hazardous when used according to manufacturer’s directions. For additional product usage and safety information please refer to www.maycocolors.com”

Sandstone is a matte, vanilla-colored glaze that contains small and medium-sized brown crystals. The variation of glaze depends on application. As the crystals melt, a variety of blue and purple shades appear.

Basic Application:

Stir well to get a good dispersion of crystals. Apply 2-3 coats using a fan or hake brush to the top two-thirds of the piece. During your last coat, use your brush to evenly distribute the crystals over the top two-thirds of the piece and move away from the bottom third. Apply to soft fired cone 04 bisque (1940°F/1060°C). Allow to dry and fire to preferred temperature, cones 5-10 (2167°F–2345°F/1186°C–1285°C). Testing recommended. For dipping, use SD-176 Sandstone Dry.

Suggestions & Tips:

- Crystals will settle to the bottom of the jar and will need a good mixing prior to initial use. Re-stir between each coat. Stir with palette knife or other unpainted tool
- Crystals will flow more than the base glaze. Avoid placing crystals to the bottom third of a vertical piece • Over-application or heavy deposition of the crystals can cause pinholing or running. While the glaze is wet, you can use your brush to redistribute the crystals to achieve balanced coverage. • Sandstone uses SW-172 Macadamia as its base glaze. For a lighter crystal effect, you may try applying two coats of SW-172 Macadamia with a third coat of SW-176 Sandstone. • When staining a crystal glaze, you may consider staining upside down to facilitate crystal dispersion on the next use. • **Cone 10 results:** Increased color variation occurs at higher temperatures which results in additional movement. Base glaze darkens and crystal melt increases with rich shades of blue and purple. • Can be used in oxidation or reduction fires. Results will vary.

The choice of clay body, thickness of glaze application, firing process and temperature will affect the fired results. Always test in your kiln and on your clay body. Updated product usage tips and interesting glaze combinations can be found on our website: www.maycocolors.com.

Safety: Do not spray apply. Non-Toxic, Non-Hazardous and Food Safe when used according to manufacturer’s directions. For additional safety information please refer to the product SDS at www.maycocolors.com.



SAFETY INFORMATION

Mayco Stoneware Crystal glazes are a mixture of AP Non-Toxic and CL (Health Caution) label. Please review the label for the individual color’s health classification and any appropriate warnings. All of the glazes in the Crystal line are Food Safe, according to FDA standards. Note: Finishedware producers may be required to have their ware food safe tested prior to introducing into commerce. The Stoneware Crystal glazes may be Dinnerware Safe when used according to manufacturer’s directions and has negligible surface texture.

STONEWARE GLOSS GLAZES

Mayco's Stoneware Gloss Glazes are highly-pigmented glaze designed to perform from cones 5-10, in oxidation or reduction firing processes on stoneware clay body of choice. The stable qualities of the Gloss glazes make it ideal for design work and full opaque coverage at mid-range temperatures.

AVAILABLE SIZES

- Wide mouth pints
- 5 lbs. Dry



PRODUCT FEATURES

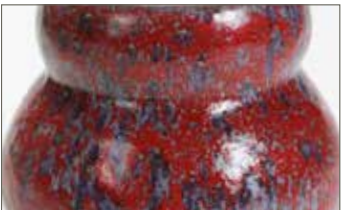
All Over Coverage

Mayco Stoneware Gloss Glazes are the ideal product for brightly colored dinnerware.



In Design and Majolica

Mayco's Stoneware Gloss glazes are incredibly stable and opaque in design work and for majolica techniques at mid-range temperatures. The integrity of your design will remain unchanged as these glazes will not move or combine with surrounding colors. Lighter colors can be used over darker colors, remaining bright and opaque.



Stoneware Combinations

Artists can achieve incredible finishes with a simple two-glaze combination. Use Stoneware Gloss Glazes to brighten or darken another glaze with layering. Glazes shown: SW-504 Red Gloss over SW-116 Robin's Egg

APPLICATION RECOMMENDATIONS

The following application recommendations are based upon the original product development intent and use for the product. Information on alternative application methods is listed in the section "Usage Variations and FAQ's".

- Stir well. Apply 2-3 coats to soft fired cone 04 bisque (1940°F/1060°C).
- Allow to dry and fire to preferred temperature, cones 5-10 (2167°F- 2345°F/1186°C- 1285°C). Testing recommended.

LABEL DIRECTIONS

“The choice of clay body, thickness of glaze application, firing process and temperature will affect fired results. Always test in your kiln, on your clay body. Safety: Do not spray apply without personal protective equipment. Food Safe, Non-Toxic and Non-Hazardous when used according to manufacturer’s directions. For additional product usage and safety information please refer to www.maycocolors.com”

Red Gloss is a highly-pigmented glaze. The stable qualities of this glaze make it ideal for design work and full opaque coverage at mid-range temperatures.

Basic Application:

Stir well. Apply 2-3 coats to soft fired cone 04 bisque (1940°F/1060°C). Allow to dry and fire to preferred temperature, cones 5-10 (2167°F- 2345°F/1186°C- 1285°C). Testing recommended. For dipping, use SD-504 Red Gloss Dry.

Suggestions & Tips:

- **Cone 10 results:** Glaze slightly darkens.
- Can be used in oxidation or reduction fires. Results may vary.

The choice of clay body, thickness of glaze application, firing process and temperature will affect the fired results. Always test in your kiln and on your clay body. Updated product usage tips and interesting glaze combinations can be found on our website: www.maycocolors.com.

Safety: Do not spray apply. Non-Toxic, Non-Hazardous and Food Safe when used according to manufacturer’s directions. For additional safety information please refer to the product SDS at www.maycocolors.com.



SAFETY INFORMATION

Mayco Stoneware Gloss glazes are AP Non-Toxic, Food Safe, and Dinnerware Safe, when used according to manufacturer’s directions. Note: Finishedware producers may be required to have their ware food safe tested prior to introducing into commerce. The Stoneware Gloss glazes are also Dinnerware Safe when used according to manufacturer’s directions and free of surface texture.

STONEWARE SPECIALTY - MUDCRACK



SW-403
White Mudcrack



SW-404
Black Mudcrack

GENERAL USE

SW-403 White Mudcrack and SW-404 Black Mudcrack are mid-range glazes that were developed to create a highly-texture raised and cracked surface. The thicker the application, the more textured the surface will be. Mudcrack can be directly applied to bisqueware or in combination with other mid-range glazes. Mudcrack is designed to perform from cones 5-10, in oxidation or reduction firing processes on stoneware clay body of choice.

AVAILABLE SIZES

- Pint
- 5 lbs. Dry

APPLICATION RECOMMENDATIONS

Stir and shake well. This product will thicken over time. Thin to desired consistency with water. We recommend consistency similar to cream. Apply 2-3 coats to soft fired cone 04 bisque (1940°F/ 1060°C). Allow to dry and fire to preferred temperature, cones 5-10 (2167°F- 2345°F/1186°C- 1285°C). Testing recommended.

- For shown chip results, apply directly to bisqueware. *See first photo below.
- Shake vigorously upon opening. Continue to shake and stir to increase fluidity to the consistency of cream.
- If the glaze does not crack on the piece before firing, it will not crack after firing.
- Due to the surface texture, we recommend that these glazes only be used on decorative surfaces.
- Mudcrack can be applied over Stoneware Gloss glazes for a slightly flatter texture. *See second photo below.
- Mudcrack can be used in combination with other Stoneware glazes to achieve different textures and effects. We recommend testing prior to use.

Discover more application and tips for use with Mudcrack glazes use on our YouTube page: <https://www.youtube.com/user/MaycoColors>



Directly on Bisque



Over Stoneware Gloss Glazes



Applied with Slip Trailer

Firing Range & Clay Bodies

Glaze will perform differently based on clay bodies and firing temperature used.

SW-403 White Mudcrack

SW-404 Black Mudcrack



LABEL DIRECTIONS

“The choice of clay body, thickness of glaze application, firing process and temperature will affect fired results. Always test in your kiln, on your clay body. Safety: Do not spray apply without personal protective equipment. Food Safe, Non-Toxic and Non-Hazardous when used according to manufacturer’s directions. For additional product usage and safety information please refer to www.maycocolors.com”

White Mudcrack is a high-texture glaze that forms a raised, cracked surface. The thicker the application, the more textured the surface will be.

Basic Application:

Stir and shake well. This product will thicken over time. Thin to desired consistency with water. We recommend consistency similar to cream. Apply 2-3 coats to soft fired cone 04 bisque (1940°F/1060°C). Allow to dry and fire to preferred temperature, cones 5-10 (2167°F- 2345°F/ 1186°C- 1285°C). Testing recommended.

Suggestions & Tips:

- For shown results, apply directly to bisqueware.
- Heavy application may cause unfired glaze to release from bisqueware.
- If glaze is thick in the jar, vigorous stirring and shaking will increase fluidity.
- **Cone 10 results:** Texture flattens, color remains white.
- Can be used in oxidation or reduction fires. Results will vary.

The choice of clay body, thickness of glaze application, firing process and temperature will affect the fired results. Always test in your kiln and on your clay body. Updated product usage tips and interesting glaze combinations can be found on our website: www.maycocolors.com.

Safety: Do not spray apply. Non-Toxic and Non-Hazardous when used according to manufacturer’s directions. For additional safety information please refer to the product SDS at www.maycocolors.com.



SAFETY INFORMATION

Stoneware Mudcrack glazes have been certified as AP Non-Toxic, safe for use by artists of all ages when used according to manufacturer’s directions. However, they are not recommended for dinnerware due to the durability of the fired glaze. Some glazes, regardless of surface texture or porosity of underlying clay body, will be designated as not suitable for dinnerware as the fired glaze surface is not durable and can be impacted by contact with food or liquids. While it may not be harmful, it is certainly not desirable. Recommended for ornamental use only.

STONEWARE SPECIALTY - MAGMA



SW-405
Light Magma

GENERAL USE

SW-405 Light Magma and SW-406 Dark Magma are mid-range glazes that were developed to create a rough, cratered surface. The thicker the application, the more textured the surface will be. Magma can be directly applied to bisqueware or in combination with other mid-range glazes. Mudcrack is designed to perform from cones 5-10, in oxidation or reduction firing processes on stoneware clay body of choice.

AVAILABLE SIZES

- Pint
- 5 lbs. Dry



SW-406
Dark Magma

APPLICATION RECOMMENDATIONS

Stir and shake well. This product will thicken over time. Thin to desired consistency with water. We recommend consistency similar to cream. Apply 2-3 coats to soft fired cone 04 bisque (1940°F/ 1060°C). Allow to dry and fire to preferred temperature, cones 5-10 (2167°F- 2345°F/1186°C- 1285°C). Testing recommended.

- For shown chip results, apply directly to bisqueware. *See first photo below.
- Apply 2-3 coats. Allow glaze to semi-dry between coats.
- A thicker application can be achieved by blotting or dotting the glaze onto the piece. *See photo below.
- Light Magma does not crater as much as the Dark Magma. We suggest using up to 5 coats to increase Light Magma texture.
- Due to the surface texture, we recommend that these glazes only be used on decorative surfaces. You may experience slight crumbling.
- Black Magma will fume to other pieces in the kiln. We suggest using a soft brick in between pieces or use on its own kiln shelf.
- Magmas can be used in combination with other Stoneware glazes to achieve different textures and effects. We recommend testing prior to use.

Discover more application and tips for use with Magma glazes use on our YouTube page: <https://www.youtube.com/user/MaycoColors>



Blotting & Dotting



Applied Directly on Bisque



Applied with Slip Trailer

Firing Range & Clay Bodies

Glaze will perform differently based on clay bodies and firing temperature used.

SW-405 Light Magma

SW-406 Dark Magma



LABEL DIRECTIONS

"The choice of clay body, thickness of glaze application, firing process and temperature will affect fired results. Always test in your kiln, on your clay body. Safety: Do not spray apply without personal protective equipment. Food Safe, Non-Toxic and Non-Hazardous when used according to manufacturer's directions. For additional product usage and safety information please refer to www.maycocolors.com"

Dark Magma is a charcoal-colored, high-texture glaze that creates a rough, cratered surface. The thicker the application, the more textured the surface will be.

Basic Application:

Stir well. Apply 2-3 coats to soft fired cone 04 bisque (1940°F/ 1060°C). Allow to dry and fire to preferred temperature, cones 5-10 (2167°F-2345°F/1186°C-1285°C). Testing recommended.

Suggestions & Tips:

- For shown results, apply directly to bisqueware.
- **Cone 10 results:** Texture slightly flattens. Lighter application produces a dark brown. Heavier application produces darker black.
- Can be used in oxidation or reduction fires. Results will vary.

The choice of clay body, thickness of glaze application, firing process and temperature will affect the fired results. Always test in your kiln and on your clay body. Updated product usage tips and interesting glaze combinations can be found on our website: www.maycocolors.com.

Safety: Do not spray apply. Non-Toxic and Non-Hazardous when used according to manufacturer's directions. For additional safety information please refer to the product SDS at www.maycocolors.com. Not recommended for dinnerware as fired surface may chip or flake.



SAFETY INFORMATION

Stoneware Magma glazes have been certified as non-toxic, safe for use by artists of all ages when used according to manufacturer's directions. However, they are not recommended for dinnerware due to the durability of the fired glaze. Some glazes, regardless of surface texture or porosity of underlying clay body, will be designated as not suitable for dinnerware as the fired glaze surface is not durable and can be impacted by contact with food or liquids. While it may not be harmful, it is certainly not desirable. Recommended for ornamental use only.

STONEWARE SPECIALTY - FLUX



SW-401
Light Flux
*Over SW-119 Cinnabar

GENERAL USE

SW-401 Light Flux and SW-402 Dark Flux are mid-range glazes that were developed to be used in combination with other mid-range glazes to produce flowing effects. Mayco Flux interacts with other glazes to create movement, bringing about "hidden" colors and visual texture.

AVAILABLE SIZES

- 4 oz. jar
- Pint



SW-402
Dark Flux
*Over SW-119 Cinnabar

APPLICATION RECOMMENDATIONS

The order in which you apply Flux - above or beneath another glaze - impacts the fired result. Designed to fire to cone 5/6, but can also be fired to cone 9/10 (movement will be more pronounced at higher temperatures).

- Variables that influence movement include the fluidity of the companion glaze, application methods, thickness and orientation of application, number of coats, firing temperature and program.
- To prevent glaze run-off, avoid applying Flux to the bottom third of your ware.
- The unique material composite of Flux alters the character of the supplemental glazes, when applied in combination. Use with Stoneware glazes, Stroke & Coat, in glaze combinations, or with brush plopping



With Stroke & Coat



With Glaze Combination



With Brush Plopping



SW-210
Emerald
under
SW-401
Light Flux



SW-134
Eggplant
under
SW-401
Light Flux



SW-130
Copper Jade
under
SW-401
Light Flux





SW-168
Coral Sands
under
SW-402
Dark Flux

SW-173
Amber Quartz
under
SW-402
Dark Flux

SW-167
Sand & Sea
under
SW-402
Dark Flux

LABEL DIRECTIONS

The choice of clay body, thickness of glaze application, firing process and temperature will affect the fired results. Always test in your kiln, on your clay body. Updated product usage tips, safety data sheets (SDS) and glaze combinations can be found on our website www.maycocolors.com/

Mayco Flux is a gloss glaze designed to interact with mid-range glazes to create movement, which brings about "hidden" colors and visual texture. The order in which you apply Mayco Flux – above or beneath another glaze – impacts the fired result. Flux is designed to fire to cone 5/6, but can be fired to cone 9/10 (movement will be more pronounced at higher temperatures).

Directions: Stir well before applying the glaze. Apply 1-3 coats over or under other glazes, uniformly brushed or randomly dabbed on with a sponge or fan brush. Do not apply Mayco Flux to the bottom third of a vertical piece due to excessive run-off.

Tips for use:

- Fired results will be impacted by the fluidity/stiffness of the companion glaze, application methods, number of coats, orientation of piece during firing, and firing temperature and kiln program.
- The orientation of the piece ultimately determines whether you'll get pooling or running effects. Vertical pieces are best for running effects, flat pieces best for pooling. You can simulate running on flat pieces by applying Mayco Flux to one side and use sills to tilt the form during firing.
- Know the "personality" of the companion glaze you plan to use. Matte glazes will move less – you may need 2-3 coats of Mayco Flux. Gloss glazes will be more fluid, so you may want to only use 1-2 coats and apply a thinner amount to the top half of the piece.
- Flux is a white gloss glaze that can be tinted with stains or other opaque glazes. We recommend using test tiles to see how the colorants affect the flux movement.

The choice of clay body, thickness of glaze application, firing process and temperature will affect the fired results. Always test in your kiln, on your clay body. Updated product usage tips, safety data sheets (SDS) and glaze combinations can be found on our website: www.maycocolors.com.

Safety: Do not spray apply.

WARNING: MAY BE HARMFUL IF SWALLOWED. Contains ZINC. PRECAUTIONS: Avoid ingestion. **KEEP OUT OF REACH OF CHILDREN.** **FIRST AID TREATMENT:** If swallowed, get prompt medical attention. For further health information contact a poison control center.

Stoneware Glazes
SW-401 Mayco Flux
Lead Free • Cone 5/6



Contents/Contenido
1 pint/473 ml



Mayco Colors Contacts:
U.S. - Hilliard, OH 43026
(614) 876-1171
www.maycocolors.com
EU - Brickkiln Lane
Etruria, Stoke-on-Trent
United Kingdom, ST4 7BP
(44) 01782-219816
Fax (44) 01782-286506

Dark Flux is a flowing glaze intended for use with other stoneware glazes to enhance movement and promote reactions for interesting effects and visual texture. The order in which you apply Dark Flux – above or beneath another glaze – impacts the fired results. Flux is designed to fire to cone 5/6 (2185°F - 2232°F / 1186° - 1222°C). Can be fired up to cone 10 (2381°F / 1305°C), testing recommended. Movement will be more pronounced at higher temperatures.

Basic Application:

Stir well. Apply 1-3 coats over or under other glazes, uniformly brushed or randomly dabbed on with a sponge or fan brush. Allow glazes to dry between coats. Do not apply Dark Flux to bottom third of a vertical piece due to excessive run-off. Fire to temperature of companion stoneware glaze(s).

Suggestions & Tips:

- Fired results will be impacted by the fluidity of the companion glaze, application methods, number of coats, orientation of piece during firing and firing temperature and kiln program. • The orientation of the piece ultimately determines whether you'll get pooling or running effects. Vertical pieces are best for running effects, flat pieces best for pooling. • Know the "personality" of the companion glaze you plan to use. Matte glazes will move less – you may need 2-3 coats of Dark Flux. Gloss glazes will be more fluid, so you may want to use only 1-2 coats and apply a thinner amount to the top half of the piece.
 - Can be used in oxidation or reduction fires. Results will vary.
- The choice of clay body, thickness of glaze application, firing process and temperature will affect the fired results. Always test in your kiln and on your clay body. Updated product usage tips and interesting glaze combinations can be found on our website: www.maycocolors.com.

WARNING: MAY BE HARMFUL IF SWALLOWED. Contains ZINC. PRECAUTIONS: Avoid ingestion. **KEEP OUT OF REACH OF CHILDREN.** **FIRST AID TREATMENT:** If swallowed, get prompt medical attention. **Safety:** Do not spray apply. Non-Toxic and Non-Hazardous when used according to manufacturer's directions. For additional safety information please refer to the product SDS at www.maycocolors.com.

Stoneware Glazes
SW-402 Dark Flux
Lead Free • Cone 5/6



1 pint/473 ml



Made in USA
Mayco Colors Contacts:
U.S. - Hilliard, OH 43026
(614) 876-1171
www.maycocolors.com
EU - Brickkiln Lane
Etruria, Stoke-on-Trent
United Kingdom, ST4 7BP
(44) 01782-219816
Fax (44) 01782-286506

ADDITIONAL SAFETY INFORMATION

SW-401 Light Flux and SW-402 Dark Flux are bear a CL (Health Caution) label and are Food Safe, according to FDA standards. Note: Finishedware producers may be required to have their ware food safe tested prior to introducing into commerce. The Stoneware Flux's are also Dinnerware Safe when used according to manufacturer's directions and free of surface texture.

MID-RANGE CLEAR GLAZES

Mayco clear glazes preserve and enhance the surface of your work. Functionally, clear glaze forms an impervious barrier that protects against liquids, dirt and abrasion. Aesthetically, our clear glazes provide a gloss or matte finish over top of your colored glaze decoration. Please refer to specific product labels and our website for detailed instruction on using and storing clear glazes. All Mayco Dipping Clear glazes are AP Non-Toxic, For Food Safe and Dinnerware Safe, when used according to manufacturer's directions.

GENERAL USE

Brushing glazes differ from dipping versions as they contain organic additives, making the brushing glazes thicker, more viscous than dipping formulas. The amount of glaze deposited on bisque is primarily a function of glaze viscosity and the amount of time the bisque is left in the glaze – careful attention to these two details are critical to obtaining satisfactory results.

AVAILABLE SIZES

- 16oz wide mouth pint
- Gallon
- 5 lbs Dry Bags

SW-001 STONEWARE CLEAR

SW-001 Stoneware Clear adds a brilliant clear, smooth, gloss finish to your work. Perfect for stoneware and porcelain bodies, 1 to 2 brushing coats is all that is needed.

Application Recommendations

The following application recommendations are based upon the original product development intent and use for the product. Information on alternative application methods is listed in the section "Usage Variations and FAQ's".

- Stir well.
- Apply to a soft-fired bisque (cone 04-06). Apply one coat if dipping or spraying; 2+ coats if brushing- allow each layer to dry before applying the next. Allow to dry and fire to cone 5/6 or up to cone 10.

Label directions:

Can also be applied to dry greenware and for single firing. Can be fired to cone 9/10. Can be oxidation or reduction fired. Heavy application may increase the incidence of crazing. Reduce the amount of glaze deposited by loading your brush with less heavily or decrease the number of brushing coats applied. The choice of the clay body, thickness of glaze application, firing process and temperature will affect the firing results. Always test in your kiln, on your clay body.

Mayco's Cone 6 Clear glaze adds a brilliantly clear, smooth gloss finish to your work. Perfect for stoneware and porcelain bodies, 1 to 2 brushing coats is all that is needed.

Basic Application:

Stir well. Apply to soft-fired bisque (cone 04/06). Apply one coat if dipping or spraying; 2+ coats if brushing – allow each coat to dry before applying the next. Allow to dry and fire to cone 5/6.

Suggestions & Tips:

- Can be applied to dry greenware for a single firing.
- Can be fired to cone 9/10.
- Can be oxidation or reduction fired.
- Heavy application may increase the incidence of crazing. Reduce the amount of glaze deposited by loading your brush less heavily or decrease the number of brushing coats applied.

The choice of clay body, thickness of glaze application, firing process and temperature will affect the fired results. Always test in your kiln, on your clay body.

Safety:

Do not spray apply without personal protective equipment. Food Safe, Non Toxic and Non Hazardous when used according to manufacturer's directions. For additional product usage and safety information please refer to www.maycocolors.com.



SW-002 STONEWARE MATTE CLEAR

SW-002 Stoneware Matte Clear fires to a satin matte finish at cone 5/6 and will perform up to cone 10 with more satin, less matte finish. Perfect for layering techniques and slip or when underglazes are used.

Application Recommendations

The following application recommendations are based upon the original product development intent and use for the product. Information on alternative application methods is listed in the section "Usage Variations and FAQ's".

- Stir Well
- Apply one coat if dipping or spraying; 2 coats if brushing. Allow to dry and fire to cone 5/6

Label directions:

One coat will create a glossier finish; thicker application will build opacity. Non-Toxic, Food Safe. Can be fired to cone 9/10. Can be oxidation or reduction fired. The choice of the clay body, thickness of glaze application, firing process and temperature will affect the firing results. Always test in your kiln, on your clay body.

Mayco's Matte Clear is a reliable, food safe clear glaze. Perfect for use with layering techniques and slip/underglaze use. Thicker applications and use over texture will form a milky white coating on the ware. Fires to a satin/matte finish at midrange.

Basic Application:

Stir well. Apply to soft-fired bisque (cone 04/06). Apply one coat if dipping or spraying; 2+ coats if brushing. Allow to dry and fire to cone 5/6.

Suggestions & Tips:

One coat will create a glossier finish; thicker applications will build opacity.

- Non Toxic, Food Safe
- Can be fired to cone 9/10.
- Can be oxidation or reduction fired.

The choice of clay body, thickness of glaze application, firing process and temperature will affect the fired results. Always test in your kiln, on your clay body. Updated product usage tips, interesting glaze combinations can be found on our website: www.maycocolors.com.

Safety:

Food Safe, Non Toxic and Non Hazardous when used according to manufacturer's directions. Do not spray apply without a NIOSH approved respirator and other personal protective equipment.



SW-003 CRACKLE MATTE CLEAR

SW-003 Crackle Matte Clear is developed for mid-range firing temperatures where a fine crackle pattern will develop with 2-3 coats.

Application Recommendation

The following application recommendations are based upon the original product development intent and use for the product. Information on alternative application methods is listed in the section "Usage Variations and FAQ's"

- A minimum of two coats are needed to develop a crackle pattern
- Non-Toxic, Not recommended for food containers due to surface characteristics
- Designed to develop a crackle pattern at mid-range (cone 5/6). Crackle pattern may not develop at high fire (cone 9/10) temperatures

Label directions:

The choice of the clay body, thickness of glaze application, firing process and temperature will affect the firing results. Always test in your kiln, on your clay body. Updated product usage, tips, interesting glaze combinations can be found on our website: www.maycocolors.com

A fine crackle pattern develops with two to three coats. A two-coat finish will be semi-transparent, 3 coats will produce more of a milky white, opaque finish.

Basic Application:

Stir well. Apply to soft-fired bisque (cone 04/06). Apply one coat if dipping or spraying; 2+ coats if brushing. Allow to dry and fire to cone 5/6.

Suggestions & Tips:

A minimum of two coats are needed to develop a crackle pattern.

- Non Toxic, Not recommended for food containers due to surface characteristics.
- Designed to develop crackle pattern at mid range temperatures (may not develop crackle pattern at cone 9/10).
- Can be oxidation or reduction fired.

The choice of clay body, thickness of glaze application, firing process and temperature will affect the fired results. Always test in your kiln, on your clay body. Updated product usage tips, interesting glaze combinations can be found on our website: www.maycocolors.com.

Safety:

Food Safe, Non Toxic and Non Hazardous when used according to manufacturer's directions. Do not spray apply without a NIOSH approved respirator and other personal protective equipment.



SW-004 STONEWARE ZINC FREE CLEAR

SW-004 Stoneware Zinc Free Clear is a specialty clear glaze designed for use on glaze containing chrome-based pigments. It ensures that you will get brilliant smooth and crystal clear surfaces over these colors. Fire to cone 5/6. Carbon trapping and a milky haze may develop at cone 9/10.

Application Recommendations

The following application recommendations are based upon the original product development intent and use for the product. Information on alternative application methods is listed in the section "Usage Variations and FAQ's".

- Zinc Free Clear can be applied directly onto porcelain or stoneware bisque. Brush 1-2 coats of SW-004, allowing each coat to dry before adding the next, and then fire to cone 6 on medium speed.
- Cone 10 Results: Carbon trapping, milky haze, and orange color may develop. Works well with common colors that contain chrome.
- If applied too thick, fired finish may become cloudy.

Label directions:

The majority of Mayco Fundamentals and Designer Liners will look best using Mayco's SW-001 Stoneware Clear over them. We recommend performing a test with your clay body and underglazes prior to expanding use. The choice of the clay body, thickness of glaze application, firing process and temperature will affect the firing results. Always test in your kiln, on your clay body. Updated product usage, tips, interesting glaze combinations can be found on our website: www.maycocolors.com

Mayco's Zinc Free Clear is a specialty clear glaze designed for use on glazes containing chrome-based pigments. It ensures that you will get a brilliant, smooth and crystal clear surface over these colors.

Basic Application: Stir well. Apply Mayco Fundamentals Underglazes, Designer Liner or other underglazes to soft-fired stoneware bisque (cone 04). Apply 1-2 coats (brushing or dipping) of SW-004 Zinc Free Clear, allowing each coat to dry before applying the next. After the glaze is dry, fire to cone 5-6 on medium speed.

Suggestions & Tips: The majority of Mayco Fundamentals and Designer Liners will look best using Mayco's SW-001 Stoneware Clear over them. We recommend performing a test with your clay body and underglazes prior to expanding use. For a list of recommendations on which clear glaze to use with Fundamentals Underglazes and Designer Liner glazes, please visit www.maycocolors.com.

- Zinc Free Clear can be applied directly onto porcelain or stoneware bisque — brush 1-2 coats of SW-004 Zinc Free Clear allowing each coat to dry before adding the next, and then fire to cone 6 on medium speed.
- Cone 10 Results: Carbon trapping and a milky haze may develop.
- Works well with common colors that contain chrome
- If applied too thick, fired finish may become cloudy

The choice of clay body, thickness of glaze application, firing process and temperature will affect the fired results. Always test in your kiln, on your clay body. Updated product usage tips, glaze combinations, cone 10 results can be found at www.maycocolors.com.

Safety: Do no spray apply. For additional safety information please refer to the product SDS at www.maycocolors.com.



SAFETY INFORMATION

All Mayco Stoneware Clear glazes are AP Non-Toxic, Food Safe and Dinnerware Safe, when used according to manufacturer's directions and are free of surface texture.

STONEWARE WASHES

Mayco's Washes are versatile in use and firing range. They can be used alone as a body stain or surface treatment or used over or under another glaze- ideal for image transfer techniques and line work. Will perform in firing temperatures from cone 06-cone 10. Available in Iron, Rutile, Manganese, Copper and Cobalt finishes.

GENERAL USE

Stoneware washes can be used alone or in combination with other glazes. As they are highly concentrated, we recommend you thin with water prior to use. They can be applied to earthenware clay bodies and low fired as well as to stoneware bodies for higher temperature firing. Test prior to use is recommended.

Non-Toxic & Food safe; however textural surfaces created via combinations with other glazes may not be suitable for food surfaces. Available in iron, rutile (titanium dioxide), manganese, copper and cobalt. Highly concentrated: small amounts, thinned with water, will go a long way

AVAILABLE SIZES

- 4 oz. jars only



PRODUCT FEATURES

Use with Stoneware Glazes

Mayco's Washes are an extremely versatile product that can stretch your palette as well as your budget. Use a Mayco Wash over or under one of your favorite Mayco Stoneware glaze and fire to cone 5 or 6.

APPLICATION RECOMMENDATIONS

The following application recommendations are based upon the original product development intent and use for the product. Information on alternative application methods is listed in the section "Usage Variations and FAQ's".

- Shake for 5-6 seconds before use. Stir well.
- Dispense amount needed into a separate container and thin with water. Dispensing the glaze onto a palette (tile, plate, etc.) - helps prevent against contamination of the contents in the jar.
- For all-over coverage: brush on 1 to 2 coats; allow to dry in-between each coat.
- Washes are concentrated – adding water is recommended. Mix only the amount you plan to use in one session.
- Can be fired from cone 06 to cone 9/10. Washes can be applied to greenware and bisque.
- The choice of clay body, thickness of glaze application, firing process and temperature will affect the fired results. Always test in your kiln, on your clay body.

USAGE VARIATIONS & FAQs

Q: What decorating tools can be used to apply washes?

A: Bands of wash can be created with any glaze brush; for broad coverage you might use a damp, clean cloth.

LABEL DIRECTIONS

“Washes are commonly used for staining techniques as well as to create visual texture both over and under glazes.

Basic Application: Stir Well. Dispense amount needed into a separate container and thin with water. For all-over coverage: brush on 1 to 2 coats; allow to dry in-between each coat.

Suggestions & Tips: Washes are concentrated - adding water is recommended. Mix only the amount you plan to use in one session. Can be fired from cone 06 to cone 9/10. Washes can be applied to greenware and bisque. The choice of clay body, thickness of glaze application, firing process and temperature will affect the fired results. Always test in your kiln, on your clay body.

Safety: Do not spray apply without proper personal protective equipment. Food Safe, Non-Toxic and Non-Hazardous when used according to manufacturer's directions. May not be suitable for food surfaces due to surface characteristics. For additional product usage and safety information please refer to www.maycocolors.com.”

Washes are commonly used for staining techniques as well as to create visual texture both over and under glazes.

Basic Application: Stir well. Dispense amount needed into a separate container and thin with water. For all-over coverage: brush on 1 to 2 coats; allow to dry in-between each coat.

Suggestions & Tips: Washes are concentrated — adding water is recommended. Mix only the amount you intend to use in one session. For firing cones 5-10, use with stoneware glazes or as a body stain. For firing cones 05-06, clear glaze is required to produce cobalt blue results. Washes can be applied to clay or bisque. The choice of clay body, thickness of glaze application, firing process and temperature will affect the fired results. Always test in your kiln on your clay body.

Safety: Do not spray apply without personal protective equipment. Food Safe, Non Toxic and Non Hazardous when used according to manufacturer's directions. May not be suitable for food surfaces due to surface characteristics. For additional product usage and safety information please refer to www.maycocolors.com.



Stoneware Wash
SW-305 Cobalt Wash
 Lead Free • Cone 5/6



Contents/Contenido :

Made in USA

Mayco Colors Contacts:
 U.S. - Hilliard, OH 43026
www.maycocolors.com
 614-876-1171
 EU - Brickkiln Lane
 Etruria, Stoke-on-Trent
 United Kingdom, ST4 7BP
 (44) 01782-219816
 Fax (44) 01782-286506

ADDITIONAL SAFETY INFORMATION

Mayco Stoneware Washes are a mixture of AP Non-Toxic and CL (Health Caution) label. Please review the label for the individual color's health classification and any appropriate warnings. All of the glazes in the Stoneware Wash line are Food Safe, according to FDA standards. Not recommended for dinnerware when used alone.

AC-001 KILN WASH

AP certified, pre-mixed, no clumps and the perfect brushing consistency, users will no longer need respirators to combine dry ingredients. Mayco has a well-balanced recipe that does not crack or peel during firing and will endure the demands of a classroom-firing schedule. To protect your kiln shelves from dripping glaze, simply coat 2-3 thin layers of Mayco Kiln Wash to each shelf. Fire shelves with bone-dry greenware in a bisque firing to mature the kiln wash. Apply it to other kiln furniture and stilts to avoid glaze fusing to the surface.

AVAILABLE SIZES

- Wide mouth pint jar

APPLICATION RECOMMENDATIONS

The following application recommendations are based upon the original product development intent and use for the product. Information on alternative application methods is listed in the section "Usage Variations and FAQ's".

- Shake or stir well.
- Thin with water if needed.
- Prior to applying, wipe the kiln shelf with a damp sponge to remove dust.
- Brush two to three uniform coats to kiln shelf, allowing Kiln Wash to semi-dry between coats.
- Not recommend for use with conventionally formulated kiln washes.
- Remove conventionally formulated kiln washes prior to application of Mayco Kiln Wash.
- Mayco Kiln Wash offers superior performance for oxidation, reduction, and specialty kiln firings; ranging from cone 018 to cone 13 temperatures.

HELPFUL HINTS

- Repairs damaged shelves – divots and dings can be repaired using multiple layers of Mayco Kiln Wash.
- Apply Mayco Kiln Wash to both sides of a kiln shelf and flip on alternate firings.
- No need to scrape off old applications; apply new layers on top of existing.
- Can be used on posts for wood, soda and salt firings.

LABEL DIRECTIONS

Premixed and ready-to-use, Mayco Kiln Wash offers superior performance for oxidation, reduction, and specialty kiln firings; ranging from cone 018 to cone 13 temperatures. Mayco Kiln Wash is easy to apply and flows smoothly over the kiln shelf. It will not crack or peel when properly applied according to directions. One proper application of Mayco Kiln Wash will remain effective through multiple firings, increasing the working life of the kiln shelf.

Mayco Kiln Wash is premixed, ready-to-use formula that offers superior performance. Designed to expand and contract similarly to that of cordierite kiln shelves, Mayco Kiln Wash will not crack or peel when properly applied. Features and benefits of Mayco Kiln Wash include:

- Pre-mixed – no more mixing and testing – the consistency is perfect without additional preparation.
- Does not have to be removed and reapplied after every firing.
- No cracking, no scoping – product will not flake off shelves and affect glaze firings.
- No need to scrape off old applications; add new layers on top of existing.
- Increases life of kiln shelves – no scoping means less wear and tear on shelves.
- Repairs damaged shelves – divots and dings can be repaired using multiple layers.
- Wide firing range – will withstand firings from cone 018 to cone 13.
- Economical as applications are long lasting and good for multiple firings.
- Use on posts for wood and soda firings.

TIPS FOR USE:

- With its stability and consistent performance, Mayco Kiln Wash eliminates the issue of kiln wash flaking off from the kiln shelf as well as fewer applications.
- When using good kiln shelf practice, applying Mayco Kiln Wash to all sides of the shelf is permitted—when flipping the shelf on alternate firings.
- Mayco Kiln Wash is easy to apply and flows smoothly over the kiln shelf.
- It is recommended to remove old kiln wash from the shelf prior to applying Mayco Kiln Wash. However, if the kiln wash is applied over an old kiln wash, Mayco Kiln Wash can bond to most varieties and help eliminate further flaking.
- Be sure to bisque fire all kiln furniture once Mayco Kiln Wash has been applied.

DIRECTIONS: Can be spray applied or brushed (proper PPE for spray application) — (Amaco label states DO NOT spray apply. Amaco — three coats — allow for some drying between coats. Not recommended to use this product with traditional kiln wash formulations.



AC-302 WAX RESIST

Wax Resist acts to repel glaze from the surface to which it is applied. As the ware is fired the wax dissipates, leaving the surface beneath as it was prior to firing. It can be applied to unglazed greenware or bisque or it can be applied over previously applied, unfired color. It can be applied with a brush, sponge or spattered. Each method allows the artist to expand the options in the decorating process.



AVAILABLE SIZES

- 2 oz. squeeze bottle
- Wide mouth pint
- 1 gallon jug

APPLICATION RECOMMENDATIONS

The following application recommendations are based upon the original product development intent and use for the product. Information on alternative application methods is listed in the section “Usage Variations and FAQ’s”.

- Apply one generous coat of Wax Resist. Even a thin coat will repel color. Once an area is coated with Wax Resist a second coat will not adhere to the previous one; it will bead up on the first coat.
- Once a coat of Wax Resist is applied it can only be removed by firing.
- When glaze or color is applied over Wax Resist with an underlying unfired glaze, any “beads” of color remaining on the wax need to be removed prior to firing. These can be removed by gently wiping or pouncing a clean, damp sponge over the waxed areas. Caution: any glaze left on the wax will adhere to the fired surface.
- A varied and dramatic effect in the fired finish can be achieved with a sea wool sponge.
- Mayco recommends the brush or sponge be preconditioned in mild liquid dish soap. Condition the brush by saturating the hairs. Then remove any excess Brush Cleaner before using the Wax Resist.
- If Wax Resist should dry in the brush it may be removed using mineral spirits.

HELPFUL HINTS

- A different effect will result when the beads are allowed to remain during the firing. This option can be used to advantage with some techniques.
- During the firing process there is additional smoke that will be given off as the wax is burned off. Allow extra ventilation of the kiln during the early part of the firing to remove these fumes and gases.
- Remember that because the wax repels the color it can fall off the ware and could land on an adjacent piece. Allow extra room when loading the kiln.
- Firing range minimum is cone 06 up to cone 10.
- This product has a tendency to chip when trying to sgraffito through it.
- Wax Resist will only repel color during application. A glaze applied too heavily may run during the firing and Wax Resist will not keep it from moving onto an area.
- Dramatic Batik effects can be achieved by layering the Wax Resist between coats of color or simply by using Wax Resist as an aid to keep color off an area while painting.

LABEL DIRECTIONS

Waterbased coating to prevent glaze from adhering when applied to bisque or greenware. Condition brush with mild liquid dish soap. Apply generous coat to design areas. Clean brush immediately after use. Wax Resist is removed by firing in kiln.

INSTRUCTIONS:
waterbased coating to prevent color from adhering when applied to bisque or greenware. Condition brush with Brush Cleaner, AC-525. Apply generous coat to design areas. Clean brush immediately after use. Wax Resist is removed by firing in kiln. Keep bottle tightly closed.



Wax Resist

AC-302

Protective Coating

Specialty Product



Conforms to
ASTM D 4236
Made in USA

Hilliard, OH 43026
(614) 876-1171
www.maycocolors.com
EU - Brickkiln Lane
Etruria, Stoke-on-Trent
United Kingdom, ST4 7BP
(44) 01782-219816
Fax (44) 01782-286506

AC-306 CLAY MENDER

Clay Mender is an “enhanced slip” that is intended to be used to repair and/or add attachments to greenware or bisque. More than ordinary slip, the enhanced formula creates a stronger bond for repairs and attachments. It can be used on bisque to join two pieces together, but is primarily for low-fire greenware use.



AVAILABLE SIZES

- 2 oz. squeeze bottle

APPLICATION RECOMMENDATIONS

The following application recommendations are based upon the original product development intent and use for the product. Information on alternative application methods is listed in the section “Usage Variations and FAQ’s”.

- If the attachment is a handle or arm like piece, then scoring or marking the area with a wire scratch tool will allow better adhesion of the appendage
- Moisten with water both sides of the break or items to be attached
- Apply one light coat of AC-306 Clay Mender to both pieces
- Apply a generous coat of Clay Mender and immediately and firmly press the pieces together, holding them into place for 10-20 seconds until these become affixed.
- Let Area dry. After drying, the areas can then be sanded and smoothed to prepare for decoration. Fire to cone 04.
- A top dressing of underglaze “may” be needed. Clay Mender sometimes will show a slightly different color than the clay being used. There are times when the glaze will not readily adhere to the mended area and the top dressing of an underglaze will overcome this problem

HELPFUL HINTS

- If there is an area that did not fill in completely with Clay Mender, an additional application may be necessary.
- If the area is large and cannot be filled in solely with product, then the addition of some clay dust to the product can thicken it to create a spackle like paste.
- For holes; thicken Clay Mender as above. Fill in the area slowly and let it dry. Repeat until the area is filled and level with the surrounding areas. A piece of cardboard or paper towel can be used to support the back of the missing area while you work. Allow to dry then fill in area.
- Hairline cracks can be difficult to repair. It helps to widen the crack and then fill this area with the Clay Mender, thus bonding the gap.

LABEL DIRECTIONS

To repair greenware or bisque. Apply heavy coat of Clay Mender on broken edges. Immediately press firmly together. Fire to shelf cone 04. Do not spray.



