

# LOW-FIRE COMBO

## EL143 Cactus Flower

## Cone 06



Technique was achieved by brushing on two (2) layers of base glaze (EL143 Cactus Flower). Then apply two (2) layers of top glaze, letting glazes dry between coats.

 <div data-bbox="381 531 527 674" data-label="Image"> </div> <div data-bbox="412 678 511 863" data-label="Caption"> <p>CG722 Seawind <b>over</b> EL143 Cactus Flower</p> </div>	 <div data-bbox="896 531 1042 674" data-label="Image"> </div> <div data-bbox="911 678 1024 863" data-label="Caption"> <p>CG795 Yadro Print <b>over</b> EL143 Cactus Flower</p> </div>	 <div data-bbox="1404 531 1550 674" data-label="Image"> </div> <div data-bbox="1419 678 1533 863" data-label="Caption"> <p>CG972 Dragon's Breath <b>over</b> EL143 Cactus Flower</p> </div>
 <div data-bbox="381 1010 527 1152" data-label="Image"> </div> <div data-bbox="396 1157 509 1341" data-label="Caption"> <p>CG974 Bloomin' Blue <b>over</b> EL143 Cactus Flower</p> </div>	 <div data-bbox="896 1010 1042 1152" data-label="Image"> </div> <div data-bbox="911 1157 1024 1341" data-label="Caption"> <p>CG980 Coral Puff <b>over</b> EL143 Cactus Flower</p> </div>	 <div data-bbox="1404 1010 1550 1152" data-label="Image"> </div> <div data-bbox="1419 1157 1533 1341" data-label="Caption"> <p>CG981 Fruity Freckles <b>over</b> EL143 Cactus Flower</p> </div>
 <div data-bbox="381 1488 527 1631" data-label="Image"> </div> <div data-bbox="396 1635 509 1820" data-label="Caption"> <p>CG986 Smoke &amp; Fire <b>over</b> EL143 Cactus Flower</p> </div>	 <div data-bbox="896 1488 1042 1631" data-label="Image"> </div> <div data-bbox="902 1635 1032 1820" data-label="Caption"> <p>CG993 Lavender Sprigs <b>over</b> EL143 Cactus Flower</p> </div>	 <div data-bbox="1404 1488 1550 1631" data-label="Image"> </div> <div data-bbox="1419 1635 1533 1820" data-label="Caption"> <p>CG998 Pink Pixie <b>over</b> EL143 Cactus Flower</p> </div>





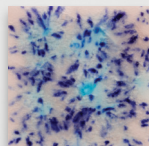
# LOW-FIRE COMBO

## EL143 Cactus Flower

### Cone 06



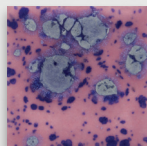
Technique was achieved by brushing on two (2) layers of base glaze (EL143 Cactus Flower). Then apply two (2) layers of top glaze, letting glazes dry between coats.



S2702  
Northern Lights

**over**

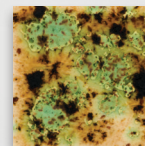
EL143  
Cactus Flower



S2703  
Berryberry Pie

**over**

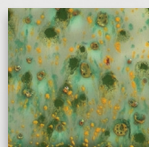
EL143  
Cactus Flower



S2709  
Cappuccino Mint

**over**

EL143  
Cactus Flower



S2714  
Herb Garden

**over**

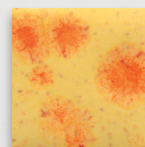
EL143  
Cactus Flower



S2727  
Poppy Fields

**over**

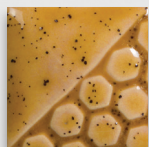
EL143  
Cactus Flower



S2729  
Citrus Splash

**over**

EL143  
Cactus Flower



EL107  
Amber Ash

**over**

EL143  
Cactus Flower



MB1556 Textured Bud Vases shown are fired to Cone 06.

MaycoColors.com

