


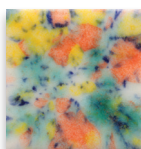

LOW-FIRE COMBO

EL145 Ginger Root

Cone 06



Technique was achieved by brushing on two (2) layers of base glaze (EL145 Ginger Root). Then apply two (2) layers of top glaze, letting glazes dry between coats.

	 CG716 Pagoda Green over EL145 Ginger Root		 CG722 Seawind over EL145 Ginger Root		 CG964 Kaleidoscope over EL145 Ginger Root
	 CG965 Mocha Marble over EL145 Ginger Root		 CG969 Floral Fantasy over EL145 Ginger Root		 CG977 Ink Spots over EL145 Ginger Root
	 CG980 Coral Puff over EL145 Ginger Root		 CG981 Fruity Freckles over EL145 Ginger Root		 CG986 Smoke & Fire over EL145 Ginger Root

MB1556 Textured Bud Vases shown are fired to Cone 06.



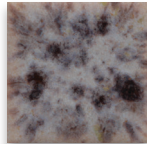
LOW-FIRE COMBO

EL144 Dark Amethyst

Cone 06



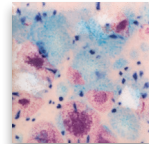
Technique was achieved by brushing on two (2) layers of base glaze (EL145 Ginger Root). Then apply two (2) layers of top glaze, letting glazes dry between coats.



CG993
Lavender Sprigs

over

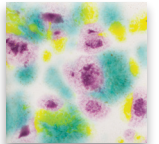
EL145
Ginger Root



CG998
Pink Pixie

over

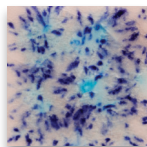
EL145
Ginger Root



CG999
Jazz Notes

over

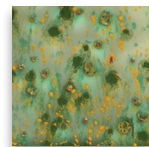
EL145
Ginger Root



S2702
Northern Lights

over

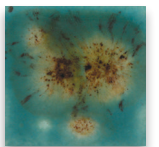
EL145
Ginger Root



S2714
Herb Garden

over

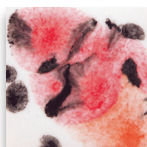
EL145
Ginger Root



S2724
Lotus Blossom

over

EL145
Ginger Root



S2727
Poppy Fields

over

EL145
Ginger Root

MB1556 Textured Bud Vases shown are fired to Cone 06.



MaycoColors.com

