



# What's the Difference?

Same Results, Different Products



**Stroke  
& Coat®**

Thicker consistency and more pigmented; requires less coats. Fires glossy.



**Foundations®**

Smoother consistency to cover larger areas; performs well as a base glaze. Fires glossy.



**FUNDAMENTALS®**  
Underglaze EST 1954

Clay based and highly pigmented. Requires a clear glaze for glossy finish.

All can go on bisque or clay from Low-Fire (cone 06) to High-Fire (cone 10)!



# LESSON PLANS

PRIMARY-ADVANCED CLAY PROJECTS

*Low-Fire and Mid-Range*



*Making Art Part of the Educational Landscape  
and Supporting the National Art Standards*



# The Fanciful Felines of Laurel Burch

 Suggested Levels: 3rd Grade - Advanced



Cone 06 Earthenware

Cone 6 Stoneware



## DID YOU KNOW?

Stroke & Coat® glazes are designed to deliver vibrant and consistent results. These glazes can be layered, blended, and mixed to create custom colors, much like traditional paint! Encourage students to apply 2-3 coats to achieve a rich, dimensional color, or use lighter coats for a subtle ombré effect! For added fun, pair them with Speckled Stroke & Coat®, which offer the same versatility but feature joyful specks.



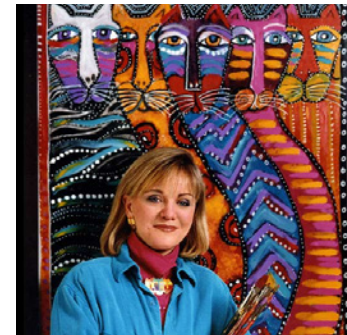
## TEACHER TIPS

- These fanciful felines are made from hollow clay tubes, crafted using the broomstick method. This technique involves inserting a broomstick or dowel into the cylinder and rotating it to remove excess clay from the interior. As a result, a uniform hollow shape is created while maintaining even wall thickness.
- Mayco Stroke & Coat® is available in value-priced Class Packs, making it convenient for art educators when placing orders.



## SUPPLIES

- Stroke and Coat® Class Pack
- Dowel rods or broomstick
- Carving tools
- Slip and scoring supplies
- Sponge
- Glaze brushes



SCAN ME



Scan to get the full lesson plan with NVAS, Objectives and Lesson Extensions.

*In this lesson... students are encouraged to experiment with pattern and color while drawing inspiration from Laurel Burch's iconic feline designs. By using Mayco's Stroke & Coat glazes, teachers can rely on high-performance materials that provide consistent results, making this an ideal choice for the classroom. This lesson plan features a low-fire and mid-range adaptation.*

# Whimsical Whipple Birds

 Suggested Levels: 4th Grade - Advanced



Cone 06 Earthenware

SCAN ME



Scan to get the full lesson plan with NVAS, Objectives and Lesson Extensions.

*In this lesson... unleash your students' creativity as they design and sculpt their own whimsical ceramic birds just like Judy Whipple. This lesson encourages students to push the boundaries of traditional art forms and embrace the playful side of clay, while also incorporating various found objects to bring their birds to life.*



## DID YOU KNOW?

Jungle Gems™ are fun for students of all ages! While stunning on their own, they can also be layered together or used with other Mayco glazes, such as Stroke & Coat® or Foundations®, for additional color depth and variation.

The #8 Soft Fan Brush is your secret weapon for achieving even, dynamic, and professional results with 2-3 coats. This brush features a wide, soft surface that allows for smooth application of Jungle Gems™ without leaving streaks or brush marks. Its fan shape helps distribute glaze evenly, which is essential for glazes like Jungle Gems™ that rely on controlled movement and crystal application.



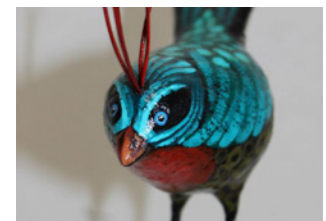
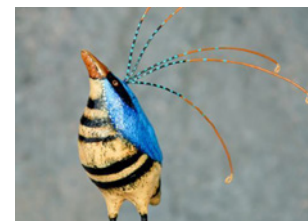
## TEACHER TIPS

- To create a more stable structure, make a flat spot on the bottom of the clay ball so it sits evenly when assembled.
- Keep glaze off the leg holes by plugging them with wax resist or a small, rolled paper plug.
- By exploring hollow-form construction, glaze layering and mixed-media assembly—such as incorporating wooden legs, wire, feathers or found objects—students can bring their creative visions to life through playful and imaginative designs!



## SUPPLIES

- Jungle Gems™ Crystal Glazes
- Stroke & Coat® glazes
- Toothpicks
- Thin dowel rods
- Copper wire
- Loop tool or plastic spoon
- Super glue
- Glaze brushes





# The Art of Dessert: Pop Art Inspired Ceramic Treats

 *Suggested Levels: 6th Grade - Advanced*



Cone 06 Earthenware

SCAN ME



Scan to get the full lesson plan with NVAS, Objectives and Lesson Extensions.

*In this lesson... inspired by Claes Oldenburg's playful sculptures, students will create pop-art ceramic sweet treats. With a focus on texture and color, this lesson plan allows students to boldly and brightly develop their creativity, all while enhancing their hand-building skills.*



## DID YOU KNOW?

Mayco Fundamentals® give you the best of both worlds! Leave them unglazed for a soft, matte finish on pie crust or add a clear coat to bring out a glossy, vibrant shine. Experiment with both finishes to create unique surface effects!



## TEACHER TIPS

- Remind student that this is a whimsical project, so proportions can be exaggerated—taller cupcakes, bigger frosting or playful shapes that would typically exist in real life. Students can make their sweet treats appear like they are in motion, such as a melting ice cream cone or swirly, flowing frosting. Using soft, flowing lines with the glaze can add a sense of movement and whimsy.



## SUPPLIES

- Fundamentals® Underglazes
- Clay cutting tools
- Slip and scoring tools
- Modeling or loop tools
- Rolling pins
- Icing tips
- Glaze brushes





# Regal Creatures of Mythology

 Suggested Levels: 6th Grade - Advanced



Cone 06 Earthenware



## DID YOU KNOW?

Opting for Mayco's Class Packs instead of individual bottles of glaze offers multiple benefits! Class Packs include the most popular colors at a value price, making them a convenient choice that simplifies the preparation process. They also help ensure consistent results for educational environments.



## TEACHER TIPS

- Encourage students to start with a strong armature to support the creature's shape. Guide them to build up layers of clay, focusing on proportions and balance. Remind them to refine details gradually and to use tools for texture and facial features to bring the mythical regal character to life.
- Try deep blues, purples and golds for a royal feel, or mix jewel tones for a vibrant, elegant effect. The combination of bold color and dynamic texture will give your pieces a truly regal finish!



## SUPPLIES

- Stroke & Coat® glazes
- Clay cutting tools
- Slip and scoring tools
- Modeling or loop tools
- Rolling pins
- Sponge
- Glaze brushes



SCAN ME



Scan to get the full lesson plan with NVAS, Objectives and Lesson Extensions.

*In this lesson... students draw inspiration from British Ceramic Artist Charles Noke, who was best known for depicting animals with remarkable realism. Students will sculpt their interpretations of majestic animals or mythical beings, such as lions, dragons, eagles or other inspiring creatures. They will learn essential clay techniques as they explore the symbolism of their chosen creature. Mayco's Stroke & Coat glazes will transform the clay with bold and vibrant colors.*



# Nature's Armor, Realistic Beetle Wall Sculptures

 Suggested Levels: 6th Grade - Advanced



Cone 06 Earthenware

SCAN ME



Scan to get the full lesson plan with NVAS, Objectives and Lesson Extensions.

*In this lesson... ceramic artists Takahiro Komuro, Kate McDowell, and Daumante Stirbyte inspire students to create a realistic ceramic beetle using slump and hump molds focusing on texture, detail and form. Students will explore beetle anatomy, texture and color while learning clay sculpting, joining and glazing techniques. Finished pieces will be both decorative and functional showcasing intricate insect designs.*



## DID YOU KNOW?

Mayco's Elements™ glazes provide a rich palette of organic, earthy colors. These high-performance glazes excel on textured surfaces and are available in various finishes, enhancing your beetle sculpture with a dynamic glaze effect. Experiment with metallic-inspired shades such as blue, green or bronze to achieve a shimmering, lifelike finish.



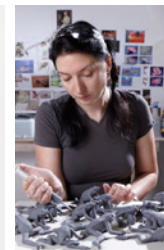
## TEACHER TIPS

- After firing, apply black acrylic paint over the Classic Crackle® glaze surface, then wipe away the excess to highlight the texture and create an aged, antique effect.
- The general rule for glazing ceramics is to keep the glaze at least a finger's width (about ¼ to ½ inch) from the bottom of the piece. This prevents the glaze from melting and fusing on the kiln shelf during firing.
- Plastic Wrap or a thin layer of cornstarch can be used to prevent clay from sticking to forms. Spraying the slab with water and gently pressing or smoothing with a sponge can help add to its elasticity when fitting a slab to a slump form.



## SUPPLIES

- Elements™ glazes
- Classic Crackle® glaze
- Clay cutting tools
- Slip and scoring tools
- Modeling or loop tools
- Rolling pins
- Mayco Slump molds (or plastic bowl)
- Glaze brushes





# Picasso Meets Mayco: Glazed Ceramic Wall Hanging

 Suggested Levels: 6th Grade - Advanced



Cone 06 Earthenware

SCAN ME



Scan to get the full lesson plan with NVAS, Objectives and Lesson Extensions.

*In this lesson... students will create a ceramic wall hanging influenced by Picasso's Cubist style, using slab construction and geometric abstraction. Designs will feature carved patterns and overlapping forms. To finish their work, students will use a combination of ceramic glazes to enhance their designs.*



## DID YOU KNOW?

Combining different glazes is ideal for this project, as it offers a variety of effects that allow students to experiment with different finishes. This approach promotes sustainability by encouraging students to creatively use leftover glazes while exploring new textures and colors. By using multiple glazes, we can enhance depth and contrast, thereby highlighting geometric shapes and adding dimension to the design.



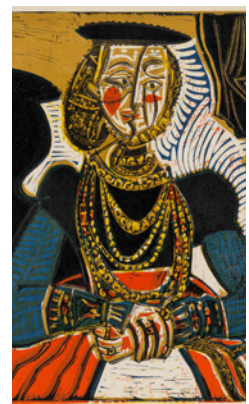
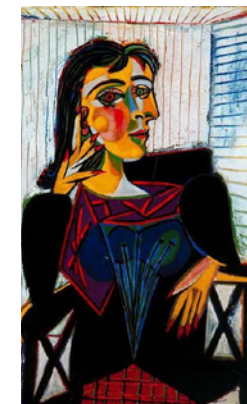
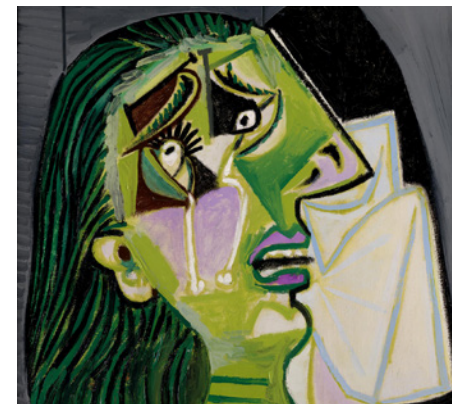
## TEACHER TIPS

- Have students experiment with masking techniques (using tape or wax resist) to create sharp, defined edges between matte and glossy glazes.
- This is a great end-of-year project to use all those leftover glazes in your classroom.



## SUPPLIES

- Combination of Mayco glazes; glossy, matte, transparent and underglazes
- Clay cutting tools
- Slip and scoring tools
- Modeling or loop tools
- Rolling pins
- Found objects or texture plates
- Glaze brushes





# Coral Reefs: Explore Hidden Depths

 Suggested Levels: 7th Grade - Advanced



Cone 6 Stoneware

Cone 06 Earthenware

SCAN ME



Scan to get the full lesson plan with NVAS, Objectives and Lesson Extensions.

*In this lesson... explore the deep sea and blend environmental science with artistic expression. Students will build their own coral reef in the style of artist Courtney Mattison and will enhance their work by using Mayco Jungle Gems™ Crystal Glazes. This lesson plan features a low-fire and mid-range adaptation.*



## DID YOU KNOW?

When using Mayco Jungle Gems™ Crystal Glazes for a coral reef sculpture, encourage students to embrace the organic, unpredictable nature of these glazes. The crystals in the glaze will form unique patterns and textures during firing, mimicking the natural variation found in coral formations.



## TEACHER TIPS

- A large fan brush is the best tool for applying Mayco Jungle Gems™ Crystal Glaze because it ensures a smooth, even application while distributing the crystals evenly.



## SUPPLIES

- Jungle Gems™ Crystal Glazes
- Empty bowl to form shell
- Carving and Needle tools
- Toothpick
- Squeeze bottle with tip
- Rolling pin
- Wooden modeling tool
- Glaze brushes





# Whale Tales: Sculpting Stories in Clay

 Suggested Levels: 6th Grade - Advanced



Cone 06 Earthenware



## DID YOU KNOW?

Mayco Foundations® glazes are ideal for the project, offering a smooth, even finish that highlights the sculptural details. Foundations® are budget friendly and available in a wide selection of colors but may also be intermixed for a custom color palette.



## TEACHER TIPS

- Apply 2-3 coats using a soft fan brush for even coverage. Use long, smooth strokes in one direction on larger areas to minimize brush marks. Allow each coat to dry.
- For eyes, mouth or other fine line details, use Foundations® FN009 Black or FN001 White with a liner brush.



## SUPPLIES

- Foundations® glazes
- Clay cutting tools
- Slip and scoring tools
- Modeling or loop tools
- Rolling pins
- Found objects or texture plates
- Glaze brushes



*In this lesson...* students will sculpt a whimsical whale bud vase with a bird perched on its back, blending functionality with storytelling like the renowned German ceramic artist Beate Kuhn. Through hand-building techniques and thoughtful details, students will explore symbolic texture and form in their work.

SCAN ME



Scan to get the full lesson plan with NVAS, Objectives and Lesson Extensions.



# Layers of the Earth: Crafting a Mindful Ceramic Vessel

 Suggested Levels: 9th Grade - Advanced



*In this lesson... students will explore hand-building techniques inspired by Jenna Bedson's style. Using techniques like slab and coil to craft a vessel that not only holds form but also brings nature into their work. Students will explore different textures, like the roughness of bark, the delicacy of leaves, or the flowing ripples of water and press them onto the surface of their vessel. This lesson plan features a low-fire and mid-range adaptation.*



## DID YOU KNOW?

Fundamentals® Underglazes are celebrated for their vibrant colors, excellent blendability, and dependable results—all at an excellent value! By guiding students through techniques such as blending, sponging and intermixing colors, they can create stunning pieces of art. Applying a glossy clear glaze will transform the matte finish, adding extra depth and shine.



## TEACHER TIPS

- Allow the underglaze to dry completely between layers if you are building up color intensity. This prevents muddiness and ensures clarity.
- Once your underglaze design is thoroughly dry, consider applying a clear glaze to the entire piece or in sections if a glossy finish is desired.



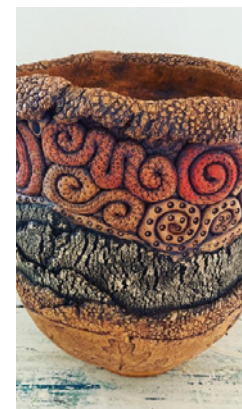
## SUPPLIES

- Fundamentals® Underglazes
- Clay tools
- Canvas sheets
- Rolling pin and guide sticks
- Texturing tools
- Slip and scoring supplies
- Glaze brushes

SCAN ME



Scan to get the full lesson plan with NVAS, Objectives and Lesson Extensions.





# Breeze Bent Architecture

 Suggested Levels: 9th Grade - Advanced



SCAN ME



Scan to get the full lesson plan with NVAS, Objectives and Lesson Extensions.

*In this lesson... students will work with inspiration from abstract artist Peter Voulkos. Students will design and build a ceramic house that looks altered by the wind. Using slab-building techniques, they will create a basic house form and then alter the shape to reflect the effects of wind. Students will add textures to mimic weathering and erosion, exploring how natural forces impact architecture.*



## DID YOU KNOW?

Mayco Foundations® glazes are known for their versatility and consistent results, making them perfect for creating a solid base of color. Their formulation ensures smooth and even application, allowing students to easily cover large surfaces without leaving streaks or uneven patches.



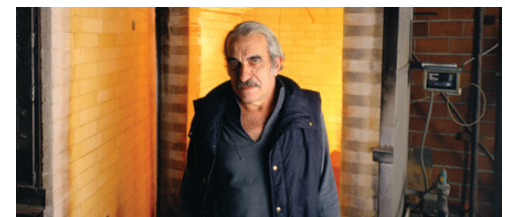
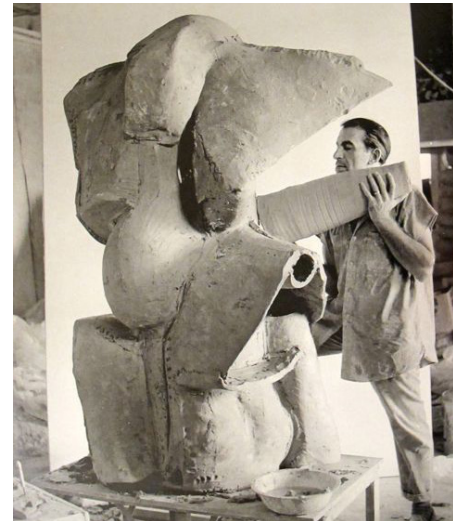
## TEACHER TIPS

- Start by building a paper model or template.
- This is a great project for some slip trailing!



## SUPPLIES

- Foundations® glazes
- Rolling pin and guide sticks
- Clay tools
- Canvas sheets
- Slip and scoring supplies
- Modeling or loop tools
- Glaze brushes





CLASS  
PACKS!

## Mayco's Most Popular Colors in Value-Priced Class Packs!

Kits are available in other product lines as well.  
View all kits on [MaycoColors.com](http://MaycoColors.com).

Proud Member of the Arts & Creative Materials Institute, Inc. and Council for Art Education



### AP Non-Toxic

Suitable for use by artists of all ages when  
used according to manufacturer's directions.



### CL Health Caution

Should not be used by  
children under the age of 12.

**Stroke  
& Coat®**



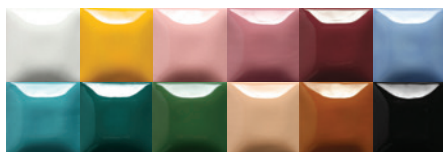
### Stroke & Coat® Kit 1

SCKIT1 2 oz. squeeze bottles  
SCKT1P 16 oz. squeeze bottles



### Stroke & Coat® Kit 2

SCKIT2 2 oz. squeeze bottles  
SCKT2P 16 oz. squeeze bottles



### Stroke & Coat® Kit 3

SCKIT3 2 oz. squeeze bottles  
SCKT3P 16 oz. squeeze bottles



### Speckled Stroke & Coat® Kit

SPKIT2 2 oz. squeeze bottles  
SPKT2P 16 oz. squeeze bottles



**Elements™**



### Elements™ Kit

ELKIT2 4 oz. jars  
ELKT2P 16 oz. jars



## Foundations®



### Foundations® Kit

FNKT3P 16 oz. jars



## FUNDAMENTALS®

Underglaze EST 1954



### Fundamentals® Kit

UGKIT1 4 oz. jars  
UGKT1P 16 oz. jars



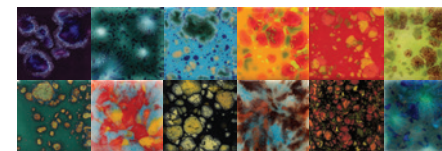
## Jungle Gems™

Crystal Glaze



### Jungle Gems™ Kit

CGKIT2 4 oz. jars  
CGKT2P 16 oz. jars



### Crystalites™ Kit

S2KIT2 4 oz. jars  
S2KT2P 16 oz. jars

