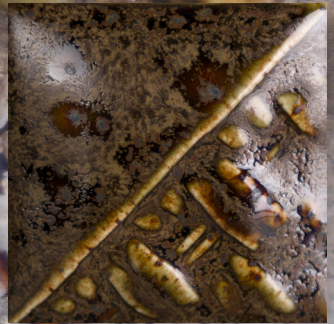




STONEWARE COMBO

SW220 Black Timber

Cone 6



Technique was achieved by brushing on two (2) layers of base glaze (SW220 Black Timber). Then apply two (2) layers of top glaze, letting glazes dry between coats.

	 SW106 Alabaster <i>over</i> SW224 Tropical Teal on plain white Stoneware		 SW109 Capri Blue <i>over</i> SW224 Tropical Teal on plain white Stoneware		 SW131 Birch <i>over</i> SW224 Tropical Teal on plain white Stoneware
	 SW106 Alabaster <i>over</i> SW224 Tropical Teal on EG006 Sparkle Black Engobe		 SW109 Capri Blue <i>over</i> SW224 Tropical Teal on EG007 Terracotta Engobe		 SW131 Birch <i>over</i> SW224 Tropical Teal on EG005 Black Engobe
	 SW172 Macadamia <i>over</i> SW224 Tropical Teal on plain white Stoneware		 SW177 Raspberry Mist <i>over</i> SW224 Tropical Teal on plain white Stoneware		 SW223 Milk Glass <i>over</i> SW224 Tropical Teal on plain white Stoneware
	 SW172 Macadamia <i>over</i> SW224 Tropical Teal on EG003 Brick Red Engobe		 SW177 Raspberry Mist <i>over</i> SW224 Tropical Teal on EG004 Dark Brown Engobe		 SW223 Milk Glass <i>over</i> SW224 Tropical Teal on EG003 Brick Red Engobe



Vases shown are fired to Cone 6 on White Stoneware body.

MaycoColors.com





STONEWARE COMBO

SW220 Black Timber Cone 10 reduction



Technique was achieved by brushing on two (2) layers of base glaze (SW220 Black Timber). Then apply two (2) layers of top glaze, letting glazes dry between coats.

	 SW106 Alabaster <i>over</i> SW224 Tropical Teal on plain white Stoneware		 SW109 Capri Blue <i>over</i> SW224 Tropical Teal on plain white Stoneware		 SW131 Birch <i>over</i> SW224 Tropical Teal on plain white Stoneware
	 SW106 Alabaster <i>over</i> SW224 Tropical Teal on EG006 Sparkle Black Engobe		 SW109 Capri Blue <i>over</i> SW224 Tropical Teal on EG007 Terracotta Engobe		 SW131 Birch <i>over</i> SW224 Tropical Teal on EG005 Black Engobe
	 SW172 Macadamia <i>over</i> SW224 Tropical Teal on plain white Stoneware		 SW177 Raspberry <i>over</i> SW224 Tropical Teal on plain white Stoneware		 SW223 Milk Glass <i>over</i> SW224 Tropical Teal on plain white Stoneware
	 SW172 Macadamia <i>over</i> SW224 Tropical Teal on EG003 Brick Red Engobe		 SW177 Raspberry Mist <i>over</i> SW224 Tropical Teal on EG004 Dark Brown Engobe		 SW223 Milk Glass <i>over</i> SW224 Tropical Teal on EG003 Brick Red Engobe



Vases shown are fired to Cone 10 reduction on White Stoneware body.

MaycoColors.com

