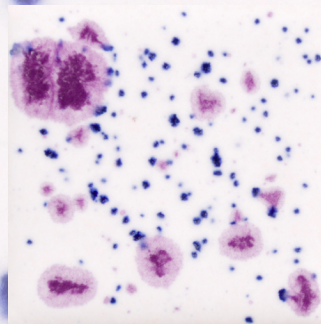


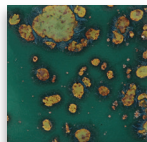
LOW-FIRE COMBO

CG1011 Frosted Berries

Cone 06



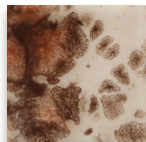
Technique was achieved by brushing on two (2) layers of base glaze (CG1011 Frosted Berries). Then apply two (2) layers of top glaze, letting glazes dry between coats.



CG780
Mystic Jade

over

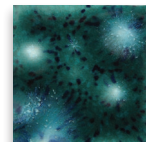
CG1011
Frosted Berries



CG795
Yadro Print

over

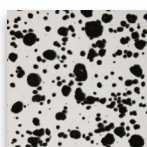
CG1011
Frosted Berries



CG974
Bloomin' Blue

over

CG1011
Frosted Berries



CG977
Ink Spots

over

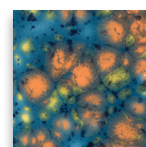
CG1011
Frosted Berries



CG981
Fruity Freckles

over

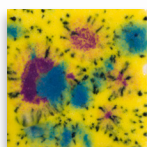
CG1011
Frosted Berries



CG983
Koi Pond

over

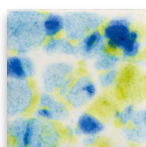
CG1011
Frosted Berries



CG1000
Mardi Gras

over

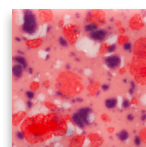
CG1011
Frosted Berries



CG1001
Gogh Iris

over

CG1011
Frosted Berries



CG1004
Berry Tart

over

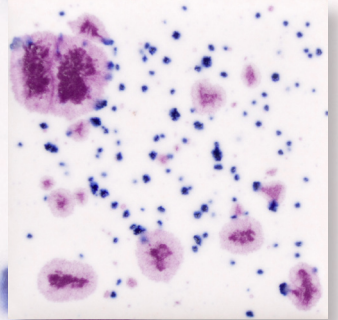
CG1011
Frosted Berries



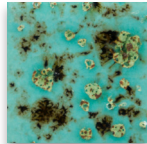
LOW-FIRE COMBO

CG1011 Frosted Berries

Cone 06



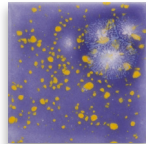
Technique was achieved by brushing on two (2) layers of base glaze (CG1011 Frosted Berries). Then apply two (2) layers of top glaze, letting glazes dry between coats.



CG1008
Blue Guppy

over

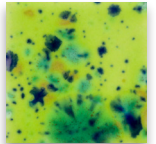
CG1011
Frosted Berries



CG1010
Periwinkle Sky

over

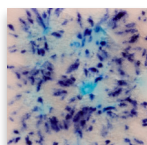
CG1011
Frosted Berries



CG1015
Cloverfield

over

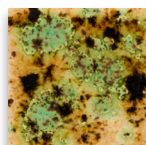
CG1011
Frosted Berries



S2702
Northern Lights

over

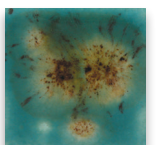
CG1011
Frosted Berries



S2709
Cappuccino Mint

over

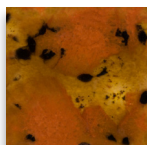
CG1011
Frosted Berries



S2724
Lotus Blossom

over

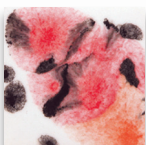
CG1011
Frosted Berries



S2725
Safari

over

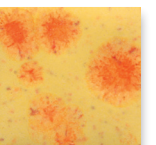
CG1011
Frosted Berries



S2727
Poppy Fields

over

CG1011
Frosted Berries



S2729
Citrus Splash

over

CG1011
Frosted Berries



MB1556 Textured Bud Vases shown are fired to Cone 06.

MaycoColors.com

