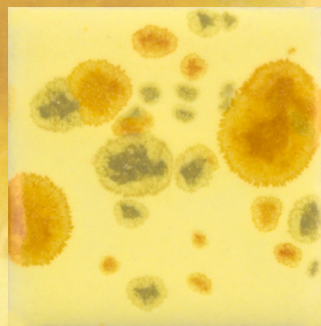


LOW-FIRE COMBO

CG1012 Haystack

Cone 06



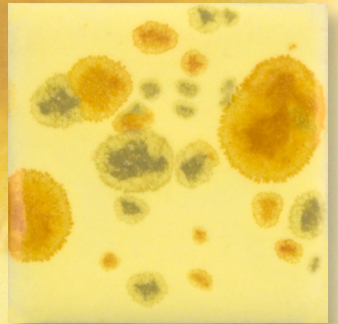
Technique was achieved by brushing on two (2) layers of base glaze (CG1012 Haystack). Then apply two (2) layers of top glaze, letting glazes dry between coats.

 <p>CG707 Woodland Fantasy <i>over</i> CG1012 Haystack</p>	 <p>CG716 Pagoda Green <i>over</i> CG1012 Haystack</p>	 <p>CG718 Blue Caprice <i>over</i> CG1012 Haystack</p>
 <p>CG722 Seawind <i>over</i> CG1012 Haystack</p>	 <p>CG780 Mystic Jade <i>over</i> CG1012 Haystack</p>	 <p>CG963 Lemon Lime <i>over</i> CG1012 Haystack</p>
 <p>CG964 Kaleidoscope <i>over</i> CG1012 Haystack</p>	 <p>CG969 Floral Fantasy <i>over</i> CG1012 Haystack</p>	 <p>CG970 Masquerade <i>over</i> CG1012 Haystack</p>

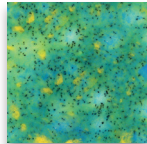
LOW-FIRE COMBO

CG1012 Haystack

Cone 06



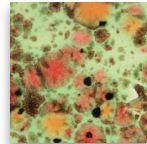
Technique was achieved by brushing on two (2) layers of base glaze (CG1012 Haystack). Then apply two (2) layers of top glaze, letting glazes dry between coats.



CG979
Meadow

over

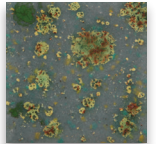
CG1012
Haystack



CG982
Mixed Melon

over

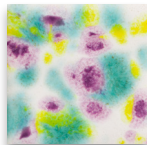
CG1012
Haystack



CG991
Mountain Moss

over

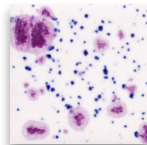
CG1012
Haystack



CG999
Jazz Notes

over

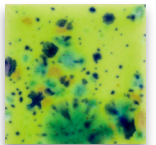
CG1012
Haystack



CG1011
Frosted Berries

over

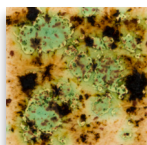
CG1012
Haystack



CG1015
Cloverfield

over

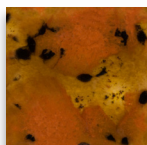
CG1012
Haystack



S2709
Cappuccino Mint

over

CG1012
Haystack



S2725
Safari

over

CG1012
Haystack



S2726
Cheetah

over

CG1012
Haystack