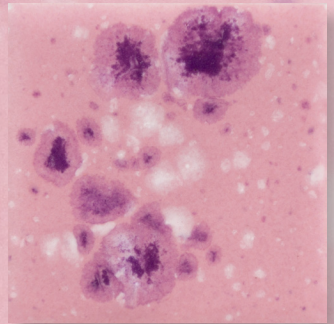



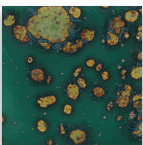

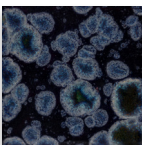

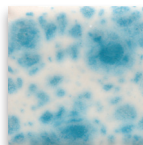

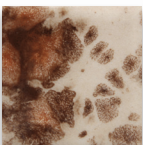

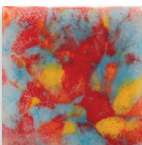

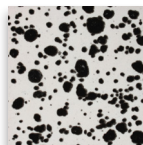

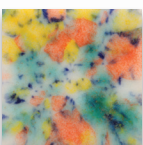

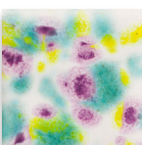

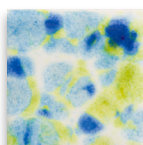
LOW-FIRE COMBO

CG1014 Pink Plum

Cone 06



Technique was achieved by brushing on two (2) layers of base glaze (CG1014 Pink Plum). Then apply two (2) layers of top glaze, letting glazes dry between coats.

CG780
Mystic Jade
over
CG1014
Pink Plum

CG786
Obsidian
over
CG1014
Pink Plum

CG788
Dutch Enamelware
over
CG1014
Pink Plum

CG795
Yadro Print
over
CG1014
Pink Plum

CG964
Kaleidoscope
over
CG1014
Pink Plum

CG977
Ink Spots
over
CG1014
Pink Plum

CG981
Fruity Freckles
over
CG1014
Pink Plum

CG999
Jazz Notes
over
CG1014
Pink Plum

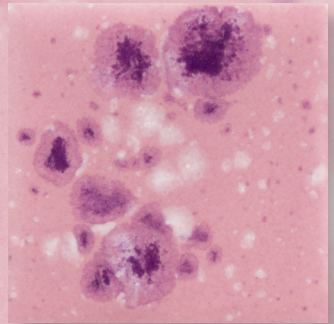
CG1001
Gogh Iris
over
CG1014
Pink Plum



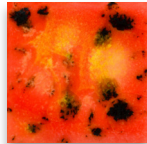
LOW-FIRE COMBO

CG1014 Pink Plum

Cone 06



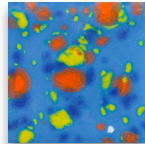
Technique was achieved by brushing on two (2) layers of base glaze (CG1014 Pink Plum). Then apply two (2) layers of top glaze, letting glazes dry between coats.



CG1002
Day Lily

over

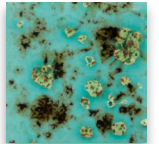
CG1014
Pink Plum



CG1007
Blueberry Bubblegum

over

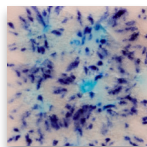
CG1014
Pink Plum



CG1008
Blue Guppy

over

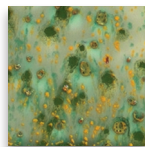
CG1014
Pink Plum



S2702
Northern Lights

over

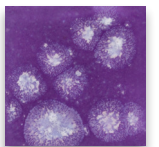
CG1014
Pink Plum



S2714
Herb Garden

over

CG1014
Pink Plum



S2723
Grape Devine

over

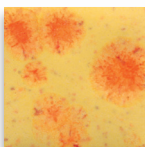
CG1014
Pink Plum



S2726
Cheetah

over

CG1014
Pink Plum



S2729
Citrus Splash

over

CG1014
Pink Plum



MB1556 Textured Bud Vases shown are fired to Cone 06.

MaycoColors.com

