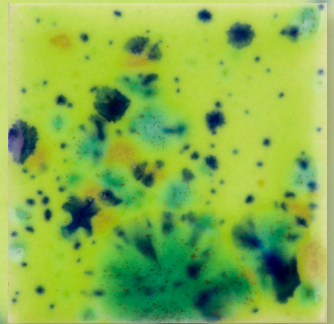


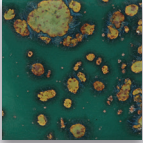

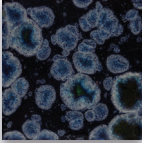

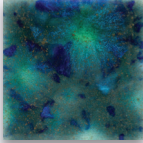

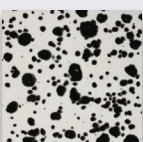

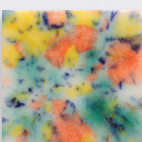

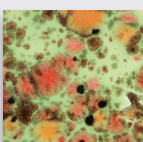

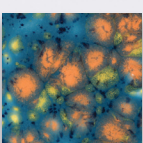

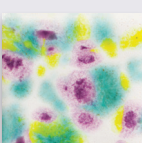

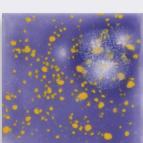
# LOW-FIRE COMBO

CG1015 Cloverfield

Cone 06



Technique was achieved by brushing on two (2) layers of base glaze (CG1015 Cloverfield). Then apply two (2) layers of top glaze, letting glazes dry between coats.

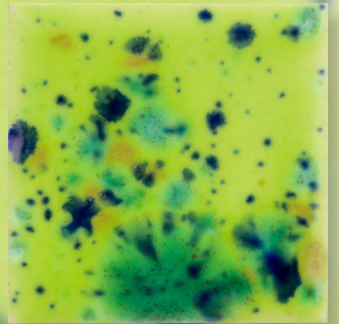
  <p>CG780 Mystic Jade</p> <p><b>over</b></p> <p>CG1015 Cloverfield</p>	  <p>CG786 Obsidian</p> <p><b>over</b></p> <p>CG1015 Cloverfield</p>	  <p>CG962 Blue Azure</p> <p><b>over</b></p> <p>CG1015 Cloverfield</p>
  <p>CG977 Ink Spots</p> <p><b>over</b></p> <p>CG1015 Cloverfield</p>	  <p>CG981 Fruity Freckles</p> <p><b>over</b></p> <p>CG1015 Cloverfield</p>	  <p>CG982 Mixed Melon</p> <p><b>over</b></p> <p>CG1015 Cloverfield</p>
  <p>CG983 Koi Pond</p> <p><b>over</b></p> <p>CG1015 Cloverfield</p>	  <p>CG999 Jazz Notes</p> <p><b>over</b></p> <p>CG1015 Cloverfield</p>	  <p>CG1010 Periwinkle Sky</p> <p><b>over</b></p> <p>CG1015 Cloverfield</p>



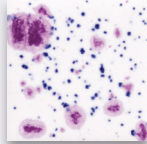
# LOW-FIRE COMBO

## CG1015 Cloverfield

## Cone 06



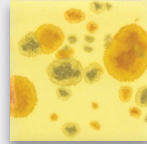
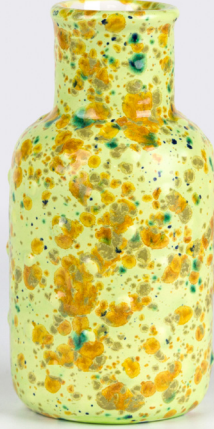
Technique was achieved by brushing on two (2) layers of base glaze (CG1015 Cloverfield). Then apply two (2) layers of top glaze, letting glazes dry between coats.



CG1011  
Frosted Berries

**over**

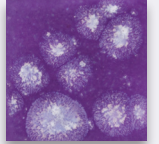
CG1015  
Cloverfield



CG1012  
Haystack

**over**

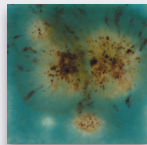
CG1015  
Cloverfield



S2723  
Grape Divine

**over**

CG1015  
Cloverfield



S2724  
Lotus Blossom

**over**

CG1015  
Cloverfield



MB1556 Textured Bud Vases shown are fired to Cone 06.

MaycoColors.com

