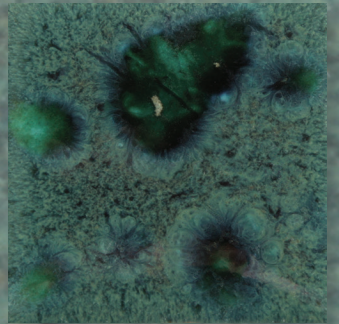


LOW-FIRE COMBO

CG713 Peacock Green

Cone 06



Technique was achieved by brushing on two (2) layers of base glaze (CG713 Peacock Green). Then apply two (2) layers of top glaze, letting glazes dry between coats.

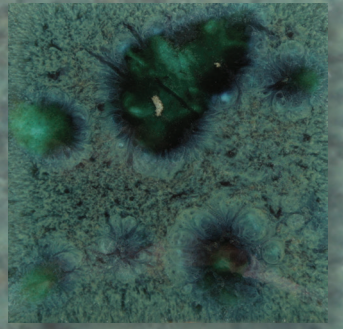
					
	<p>CG780 Mystic Jade over CG713 Peacock Green</p>		<p>CG798 Black Iris over CG713 Peacock Green</p>		<p>CG977 Ink Spots over CG713 Peacock Green</p>
					
	<p>CG979 Meadow over CG713 Peacock Green</p>		<p>CG981 Fruity Freckles over CG713 Peacock Green</p>		<p>CG999 Jazz Notes over CG713 Peacock Green</p>
					
	<p>CG1001 Gogh Iris over CG713 Peacock Green</p>		<p>CG1006 Purple Reign over CG713 Peacock Green</p>		<p>CG1007 Blueberry Bubblegum over CG713 Peacock Green</p>



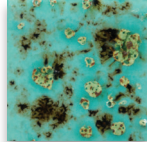
LOW-FIRE COMBO

CG713 Peacock Green

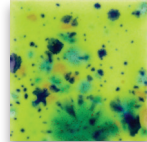
Cone 06



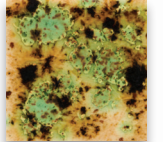
Technique was achieved by brushing on two (2) layers of base glaze (CG713 Peacock Green). Then apply two (2) layers of top glaze, letting glazes dry between coats.



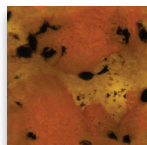
CG1008
Blue Guppy
over
CG713
Peacock Green



CG1015
Cloverfield
over
CG713
Peacock Green



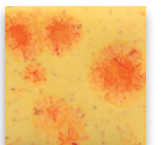
S2709
Cappuccino Mint
over
CG713
Peacock Green



S2725
Safari
over
CG713
Peacock Green



S2726
Cheetah
over
CG713
Peacock Green



S2729
Citrus Splash
over
CG713
Peacock Green



MB1556 Textured Bud Vases shown are fired to Cone 06.

MaycoColors.com

