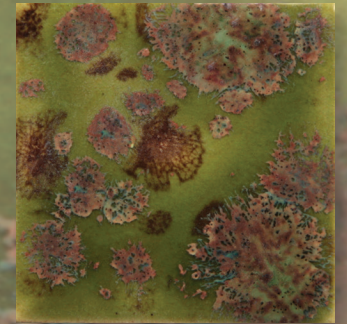




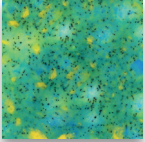

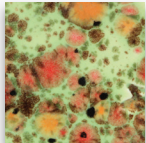

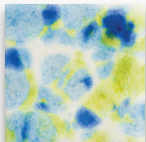
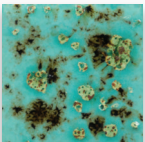

LOW-FIRE COMBO

CG716 Pagoda Green

Cone 06



Technique was achieved by brushing on two (2) layers of base glaze (CG716 Pagoda Green). Then apply two (2) layers of top glaze, letting glazes dry between coats.

  <p>CG977 Ink Spots</p> <p>over</p> <p>CG716 Pagoda Green</p>	  <p>CG979 Meadow</p> <p>over</p> <p>CG716 Pagoda Green</p>	  <p>CG981 Fruity Freckles</p> <p>over</p> <p>CG716 Pagoda Green</p>
  <p>CG982 Mixed Melon</p> <p>over</p> <p>CG716 Pagoda Green</p>	  <p>CG985 Monet's Pond</p> <p>over</p> <p>CG716 Pagoda Green</p>	  <p>CG999 Jazz Notes</p> <p>over</p> <p>CG716 Pagoda Green</p>
  <p>CG1001 Gogh Iris</p> <p>over</p> <p>CG716 Pagoda Green</p>	  <p>CG1008 Blue Guppy</p> <p>over</p> <p>CG716 Pagoda Green</p>	  <p>CG1011 Frosted Berries</p> <p>over</p> <p>CG716 Pagoda Green</p>

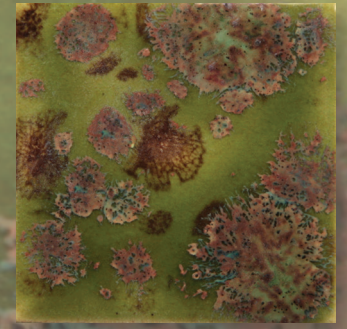
MB1556 Textured Bud Vases shown are fired to Cone 06.



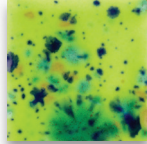
LOW-FIRE COMBO

CG716 Pagoda Green

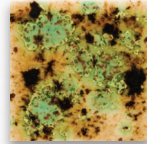
Cone 06



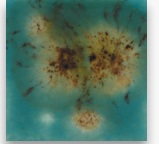
Technique was achieved by brushing on two (2) layers of base glaze (CG716 Pagoda Green). Then apply two (2) layers of top glaze, letting glazes dry between coats.



CG1015
Cloverfield
over
CG716
Pagoda Green



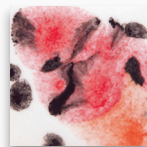
S2709
Cappuccino Mint
over
CG716
Pagoda Green



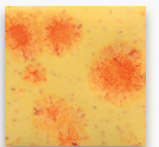
S2724
Lotus Blossom
over
CG716
Pagoda Green



S2726
Cheetah
over
CG716
Pagoda Green



S2727
Poppy Fields
over
CG716
Pagoda Green



S2729
Citrus Splash
over
CG716
Pagoda Green



MB1556 Textured Bud Vases shown are fired to Cone 06.

MaycoColors.com

